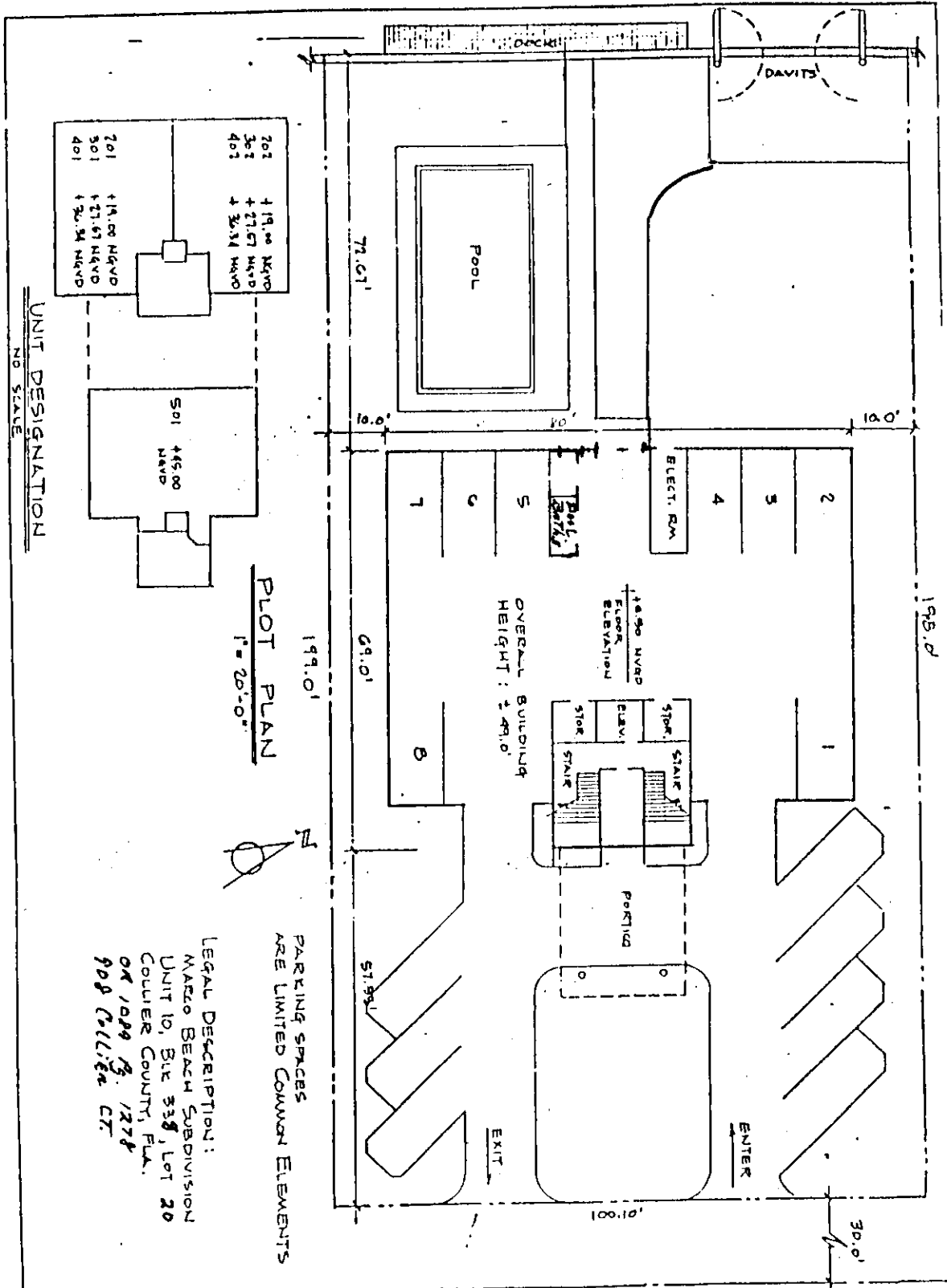


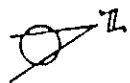
Voyager Condominium

908 Collier Court



UNIT DESIGNATION
NO SCALE

PLOT PLAN
1" = 20'-0"

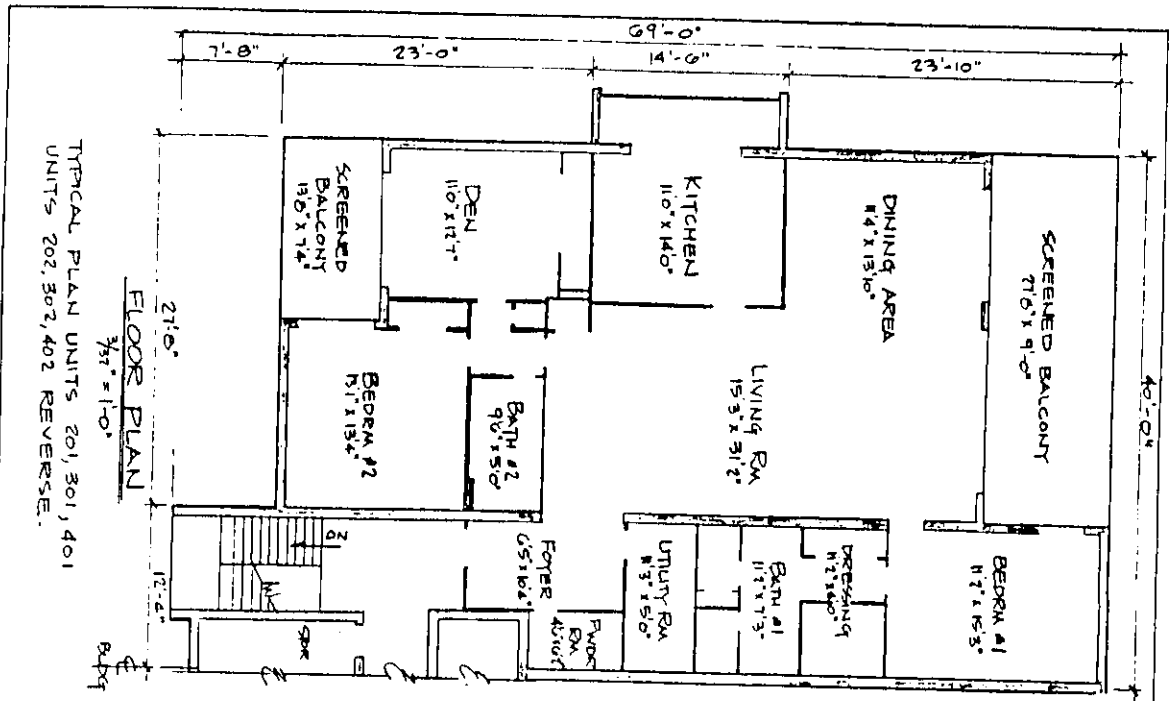


LEGAL DESCRIPTION:
MARCO BEACH SUBDIVISION
UNIT 10, BOX 338, LOT 20
COLLIER COUNTY, FLA.
OR 1029 B. 1278
908 COLLIER CT

PARKING SPACES
ARE LIMITED COMMON ELEMENTS

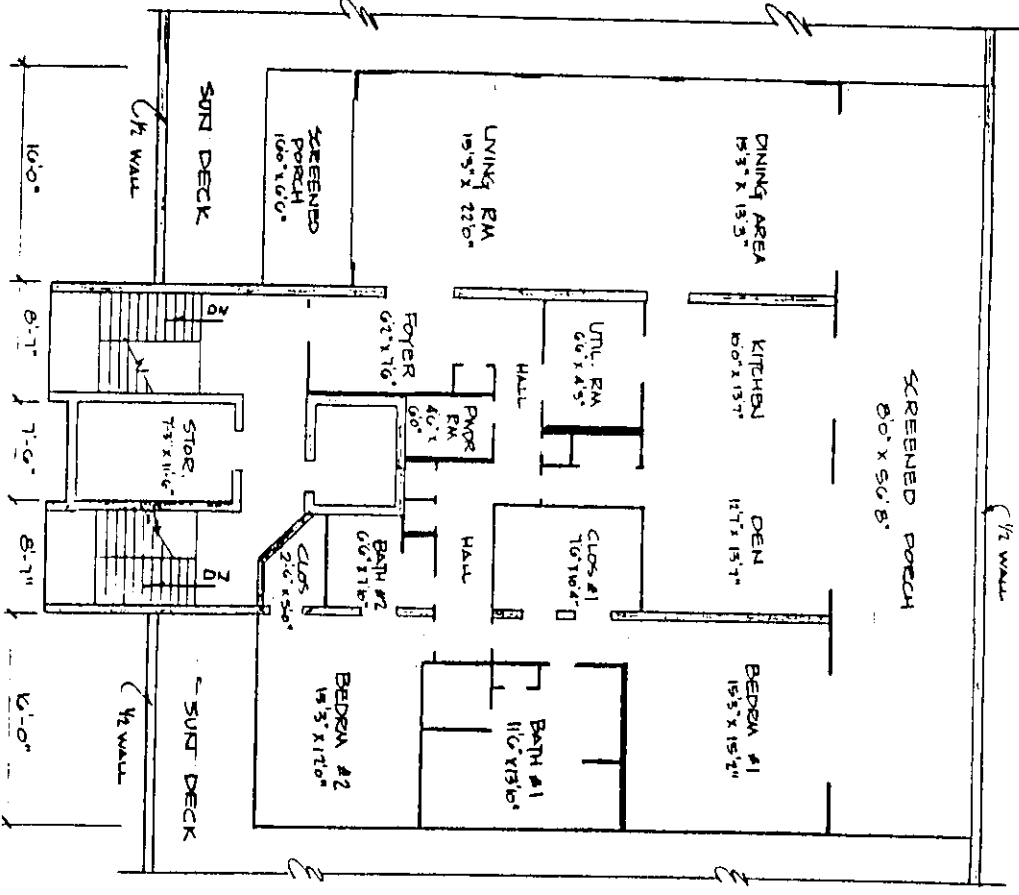
PROPOSED
Voyager

JAMES E. HIRST & ASSOCIATES, INC.
Civil & Structural Engineers
P.O. Box 1042



TYPICAL FLOOR PLAN UNITS 201, 301, 401
UNITS 202, 302, 402 REVERSE.

FLOOR PLAN
3/32" = 1'-0"



PENTHOUSE FLOOR PLAN
3/32" = 1'-0"

PROPOSED
THE ~~CLUB~~ CLUB,
A CONDOMINIUM
Voyager

JAMES E. HIRST & ASSOCIATES, INC.
Civil & Structural Engineers
P.O. Box 1042
Naples, Florida 33939

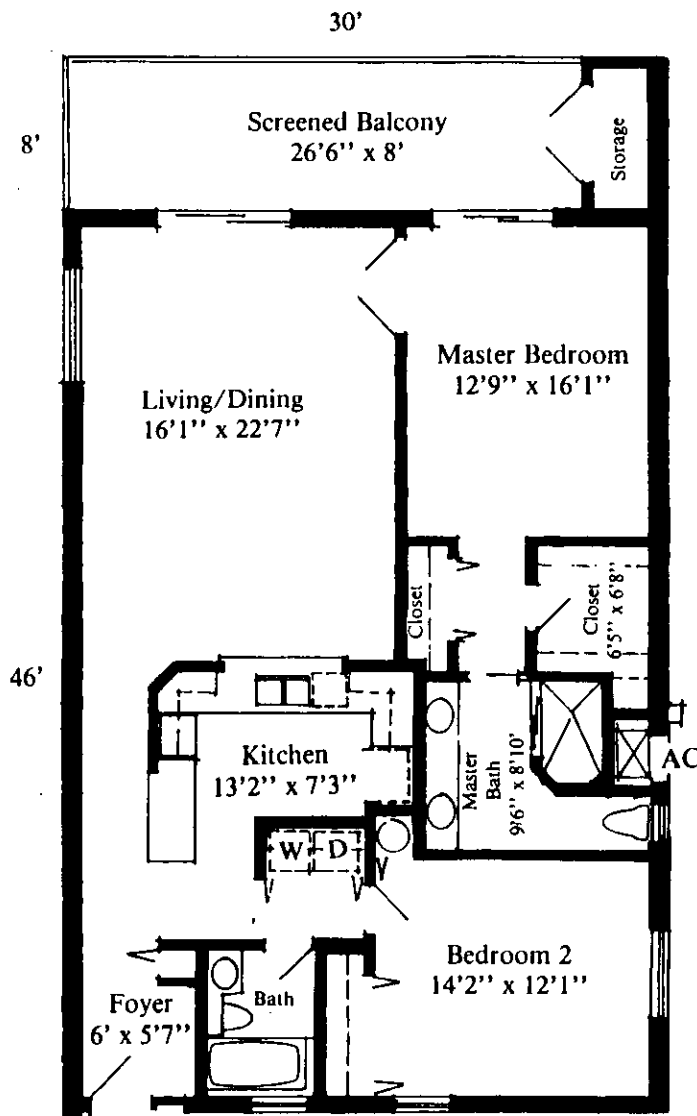
JULY 20, 1978

PAGE 3 OF 5

Two bedroom Units (18 units)

1380 sq. ft. (exterior of masonry wall to center line of party wall)

240 sq. ft. Balcony (outside of balcony structure including storage closet)



Room dimensions are approximate inside measurements.

NOTE: This plan is for Units #02, 03, 04, & 05. Units #01 and 06 vary.

KITCHEN

- Refrigerator
- Dishwasher
- Range w/oven
- Microwave Oven
- Washer and Dryer
- Mica cabinets and countertops
- Stainless steel sink w/spray
- Breakfast bar w/pass-thru to living room
- Lighted dome ceiling w/fan
- Upper storage cabinets above washer and dryer area (except townhouse units)

LIVING ROOM

- Sliding glass doors w/access to screen porch
- 6' opening w/French doors to master bedroom

BATHROOMS

- Mica vanities w/white enamel cast iron sinks
- Cast iron tub w/4" ledge along side and end to provide spacious showering room
- Windows in bathrooms
- Ceramic tile floor covering
- Double sinks in master bath
- 3' x 5'2" shower in master bath
- Shower door in master bath

SCREENED-IN BALCONY

- Off-set design for privacy and view
- Private storage closet (except 06 units)
- 8' x 30' square footage (dimension including storage closet)
- Access from living room and master bedroom

CLOSETS

- His and hers closets in master bedroom
- Ventilated vinyl shelving