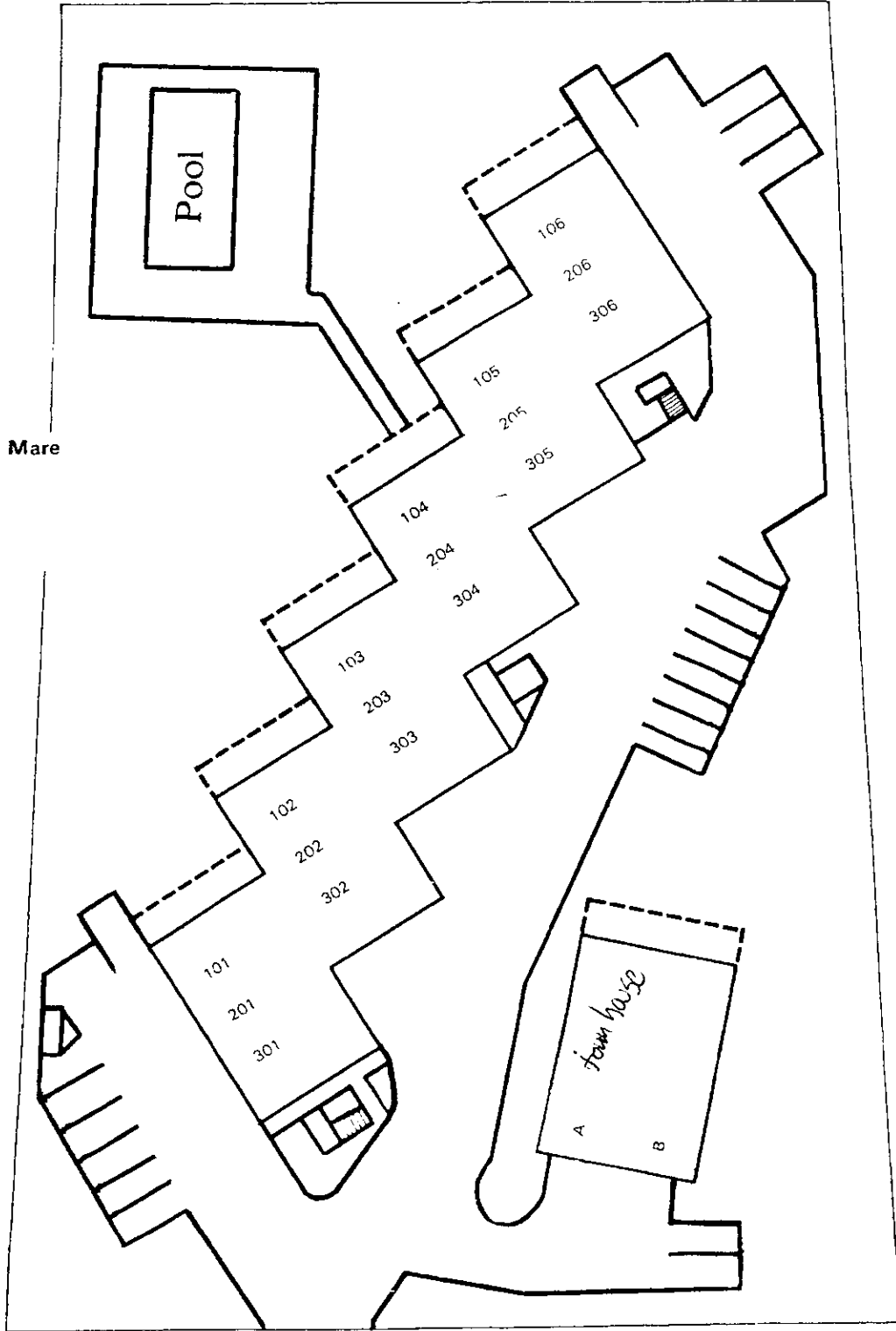


Smokehouse Bay

Villa del Mare



ELKCAM CIRCLE

VILLA del MARE



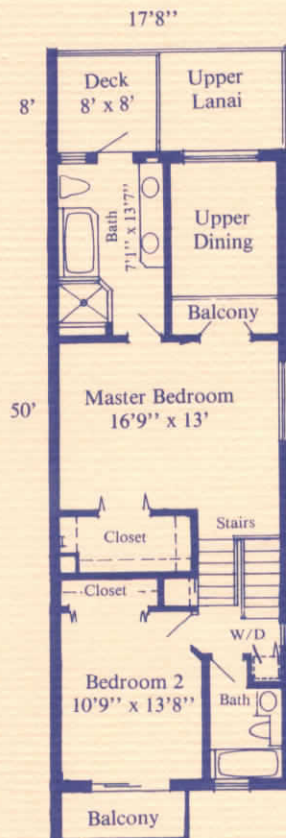
## VILLA del MARE OF MARCO ISLAND CONDOMINIUM

Tranquil and private are the best words to describe the relaxing lifestyle of Villa del Mare of Marco Island Condominiums. It is ideally located on Marco Island with direct water access to the Gulf of Mexico, walking distance to shopping, post office, restaurants, and full service marina. Championship golf course and beach are only minutes away by car.

The spacious two bedroom units were designed for informal luxury living with two unique townhouses.

### FEATURES

- 20' x 40' heated pool with depth of 3' to 6' with extended deck area overlooking Smokehouse Bay
- Assigned covered parking (one space per unit)
- Extended passageway for privacy
- Centrally located elevator
- Low density (only 20 units)
- 18 units have Southern exposure and view of Smokehouse Bay
- Smoke detectors in all units



**Upper Level**



**Lower Level**

Room dimensions are approximate inside measurements.

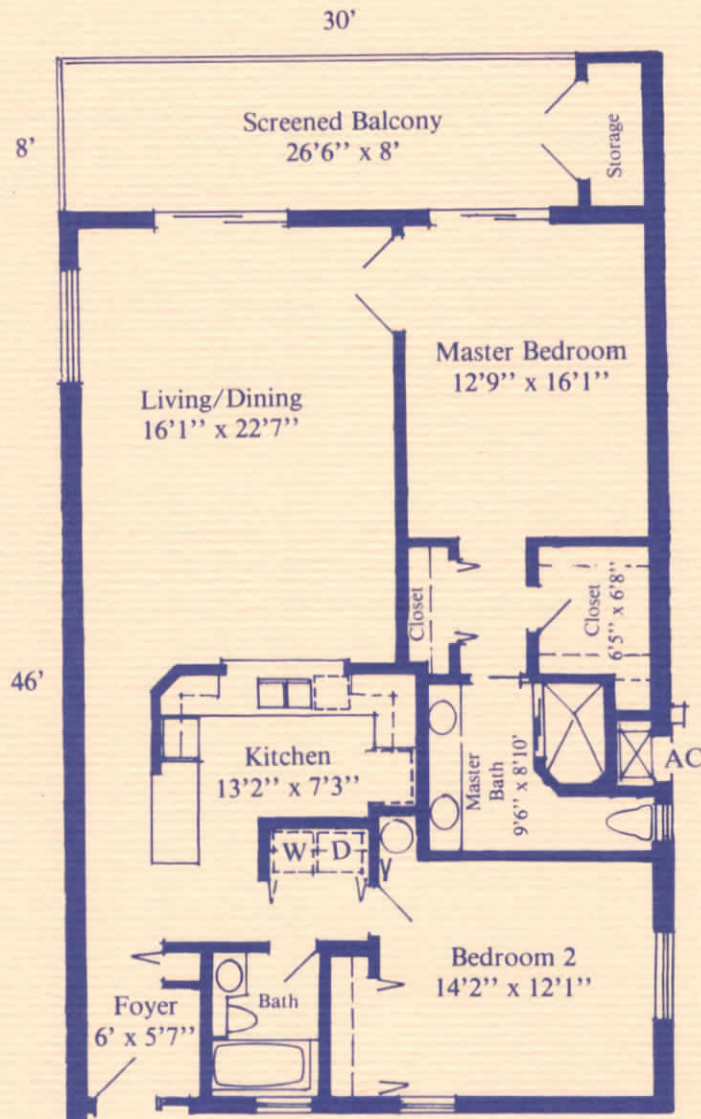
### Townhouse Units (2 units)

1404 sq. ft. (exterior of masonry wall to center line of party wall)  
288 sq. ft. Balcony (outside of balcony structure)

## Two bedroom Units (18 units)

1380 sq. ft. (exterior of masonry wall to center line of party wall)

240 sq. ft. Balcony (outside of balcony structure including storage closet)



Room dimensions are approximate inside measurements.

**NOTE:** This plan is for Units #02, 03, 04, & 05. Units #01 and 06 vary.

### KITCHEN

- Refrigerator
- Dishwasher
- Range w/oven
- Microwave Oven
- Washer and Dryer
- Mica cabinets and countertops
- Stainless steel sink w/spray
- Breakfast bar w/pass-thru to living room
- Lighted dome ceiling w/fan
- Upper storage cabinets above washer and dryer area (except townhouse units)

### LIVING ROOM

- Sliding glass doors w/access to screen porch
- 6' opening w/French doors to master bedroom

### BATHROOMS

- Mica vanities w/white enamel cast iron sinks
- Cast iron tub w/4" ledge along side and end to provide spacious showering room
- Windows in bathrooms
- Ceramic tile floor covering
- Double sinks in master bath
- 3' x 5'2" shower in master bath
- Shower door in master bath

### SCREENED-IN BALCONY

- Off-set design for privacy and view
- Private storage closet (except 06 units)
- 8' x 30' square footage (dimension including storage closet)
- Access from living room and master bedroom

### CLOSETS

- His and hers closets in master bedroom
- Ventilated vinyl shelving