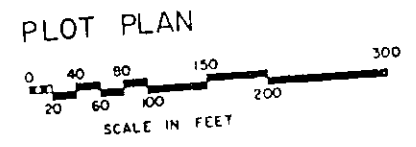
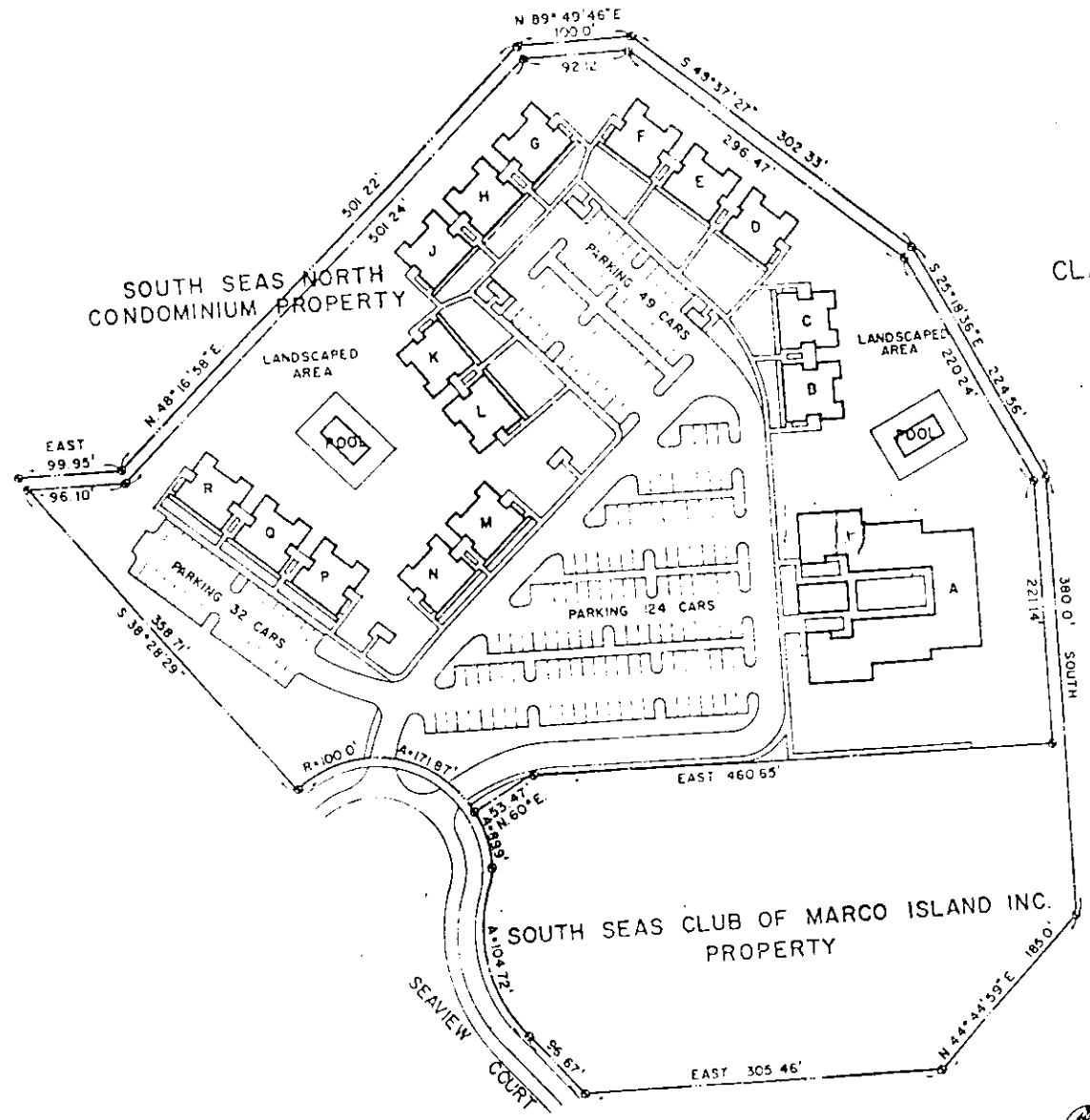


ROBERT C WEST, ARCHITECT, LICENSED IN THE STATE OF FLORIDA HEREBY THAT EXHIBIT 2 PAGES 1 THROUGH 14 TOGETHER WITH THE WORDING OF THE DECLARATION IS A CORRECT REPRESENTATION OF THE IMPROVEMENTS TO BE AND THAT THERE CAN BE DETERMINED THEREFROM IDENTIFICATION, LOCATION, DIMENSIONS, AND SIZE COMMON ELEMENTS AND EACH CONDOMINIUM UNIT HEREIN.

Robert C West
 ROBERT C WEST, A.I.A., ARCHITECT
 FLORIDA REGISTRATION NUMBER 3285
 DATE 4-14-78



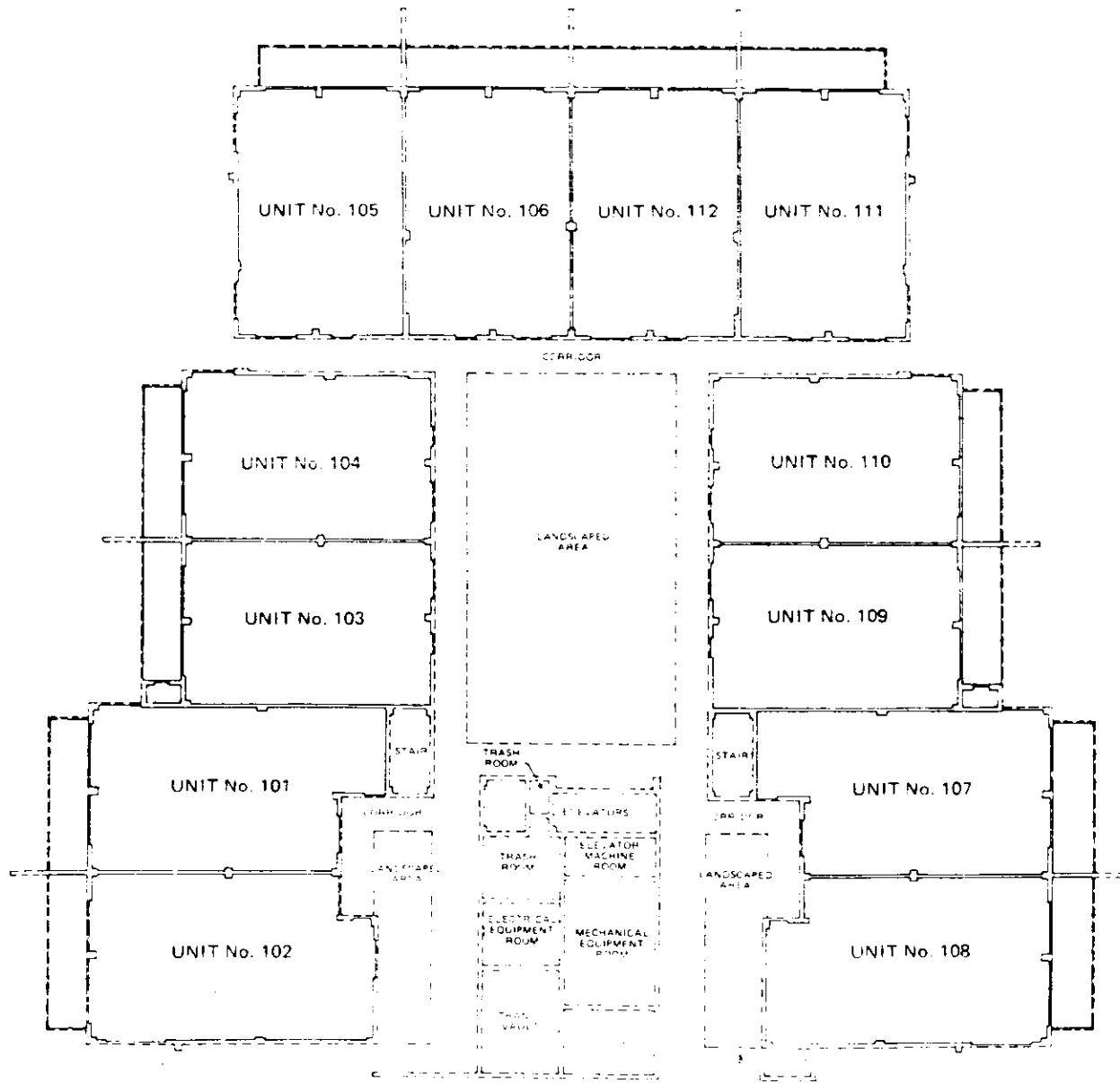
SOUTH SEAS NORTH CONDOMINIUM

APARTMENTS OF MARCO ISL
 ROBERT CANNEY WEST ARCHITECTS, INC.

EXHIBIT 2
 PAGE 1

PAGE 1

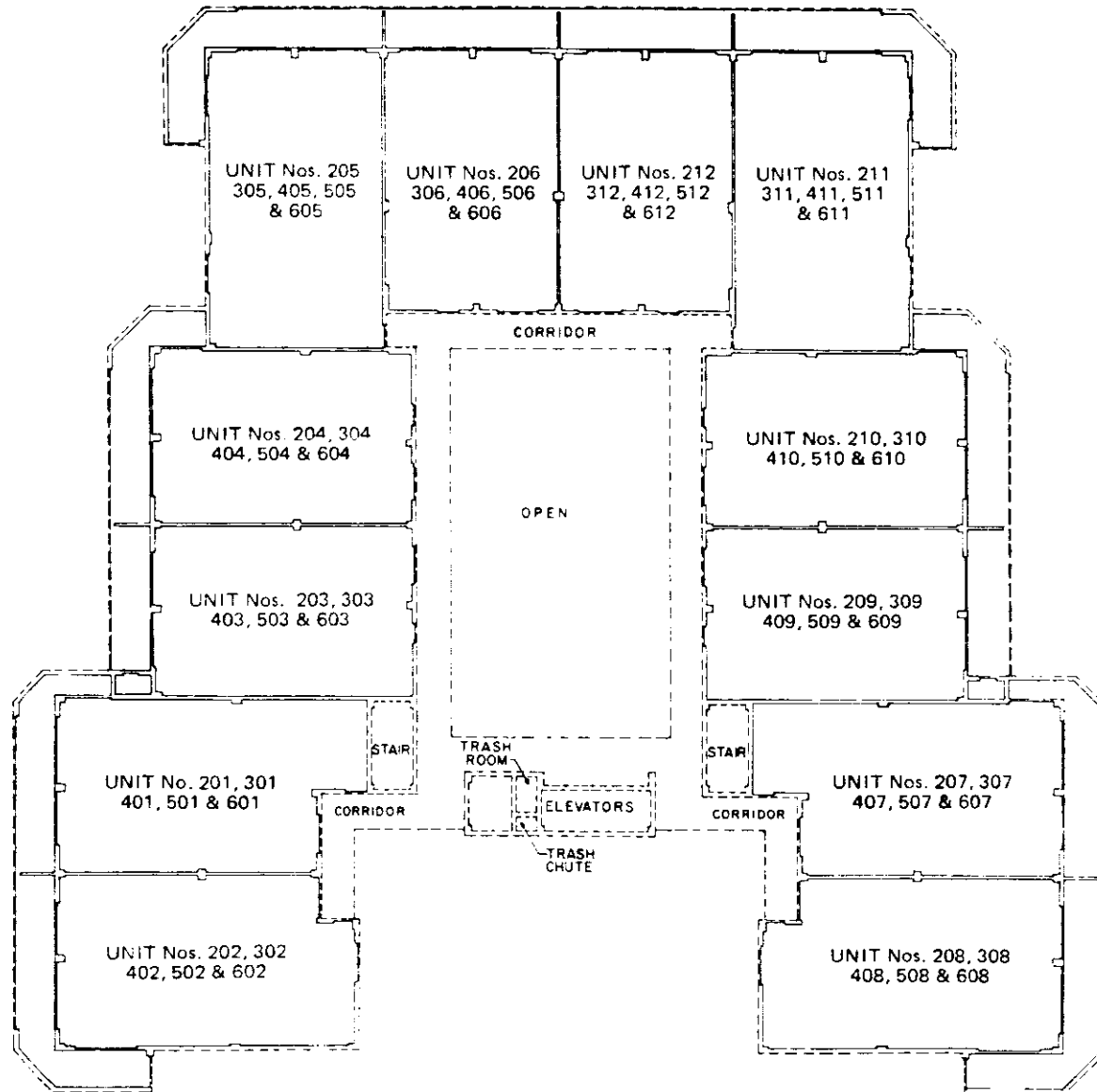
SOUTH SEAS NORTH CONDOMINIUM OF MARCO ISLAND



GROUND FLOOR PLAN - BUILDING A



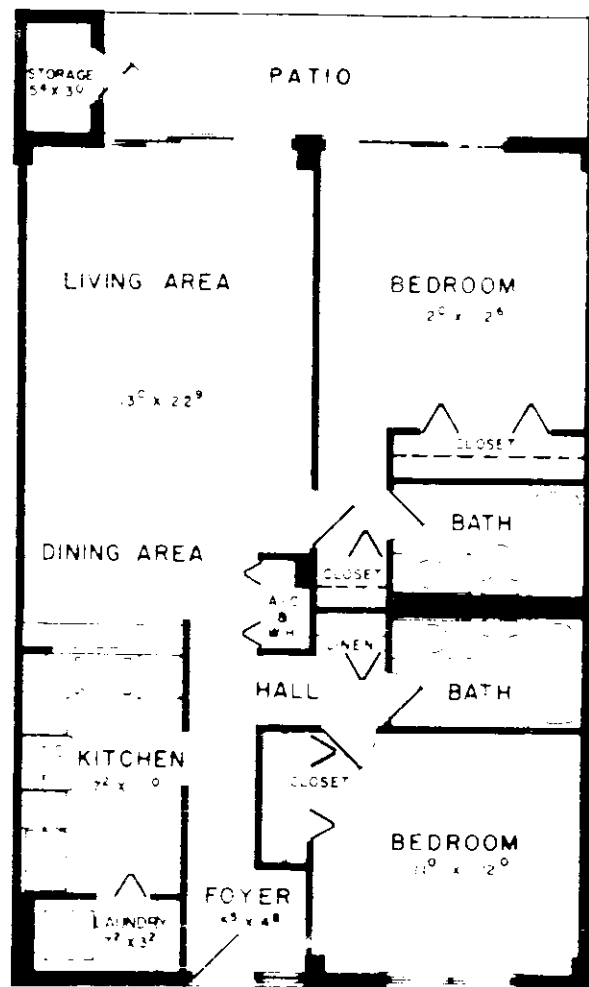
SOUTH SEAS NORTH CONDOMINIUM OF MARCO ISLAND



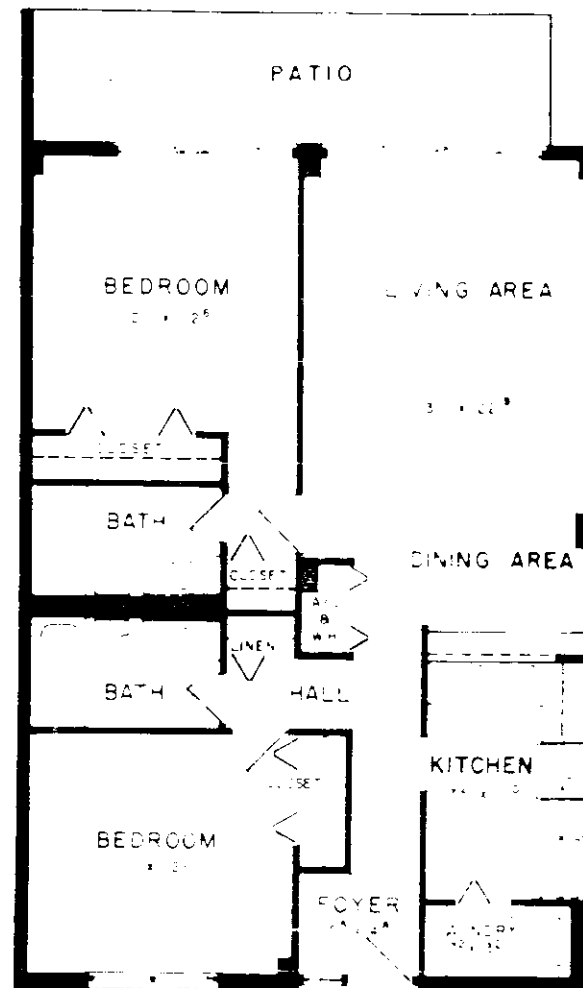
TYPICAL PLAN - FLOORS 2 - 6 - BUILDING A



SOUTH SEAS NORTH CONDOMINIUM OF MARCO ISLAND



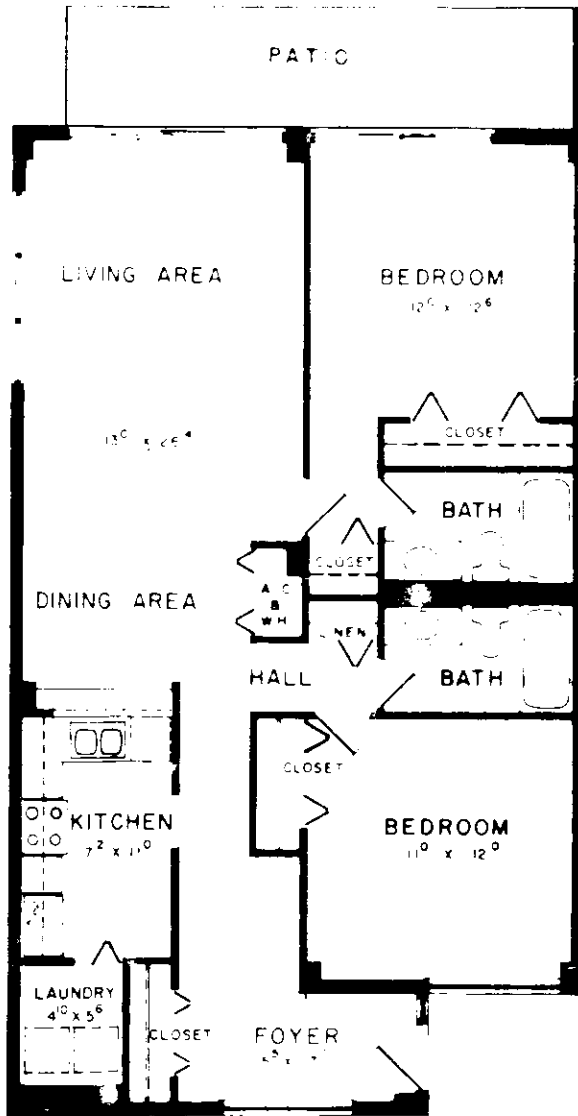
APARTMENT 103 AS SHOWN
 APARTMENT 109 REVERSE



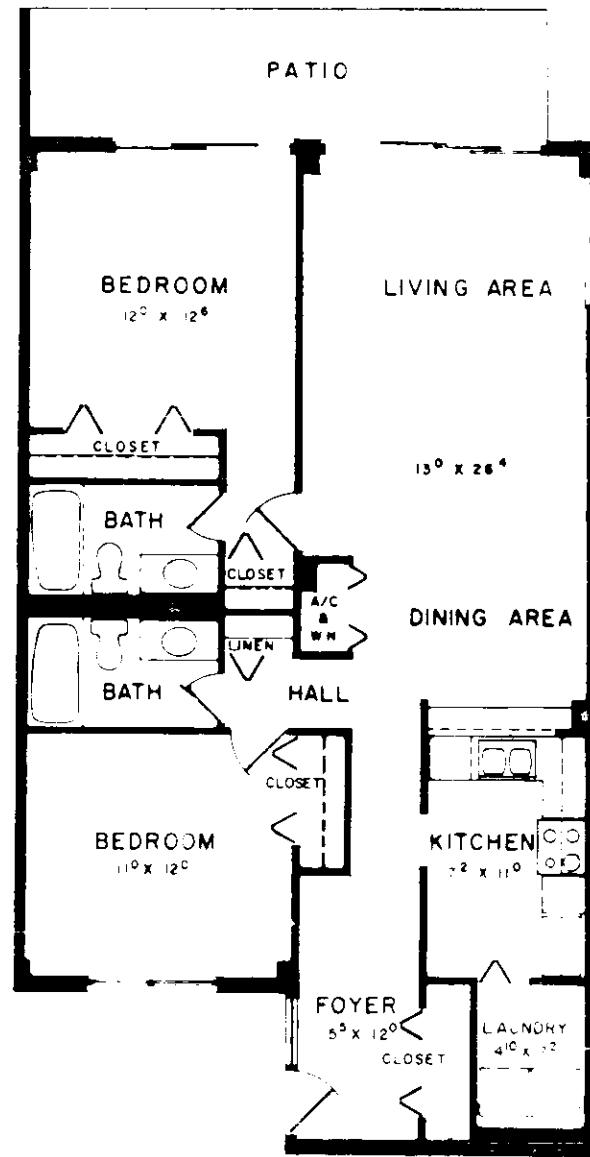
APARTMENT 104 AS SHOWN
 APARTMENT 110 REVERSE



SOUTH SEAS NORTH CONDOMINIUM OF MARCO ISLAND



APARTMENT 102 AS SHOWN
APARTMENT 108 REVERSE

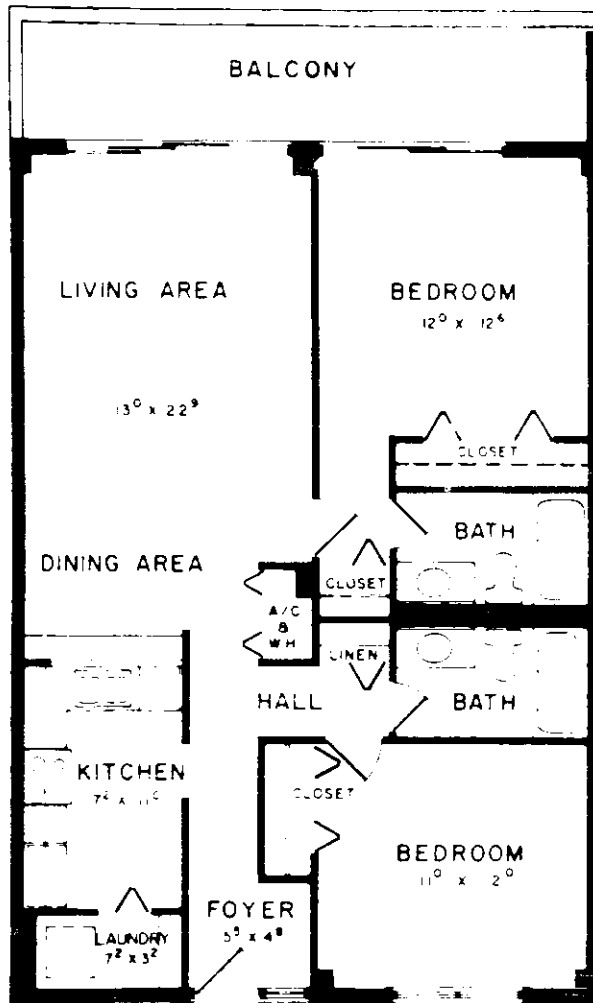


APARTMENT 101 AS SHOWN
APARTMENT 107 REVERSE

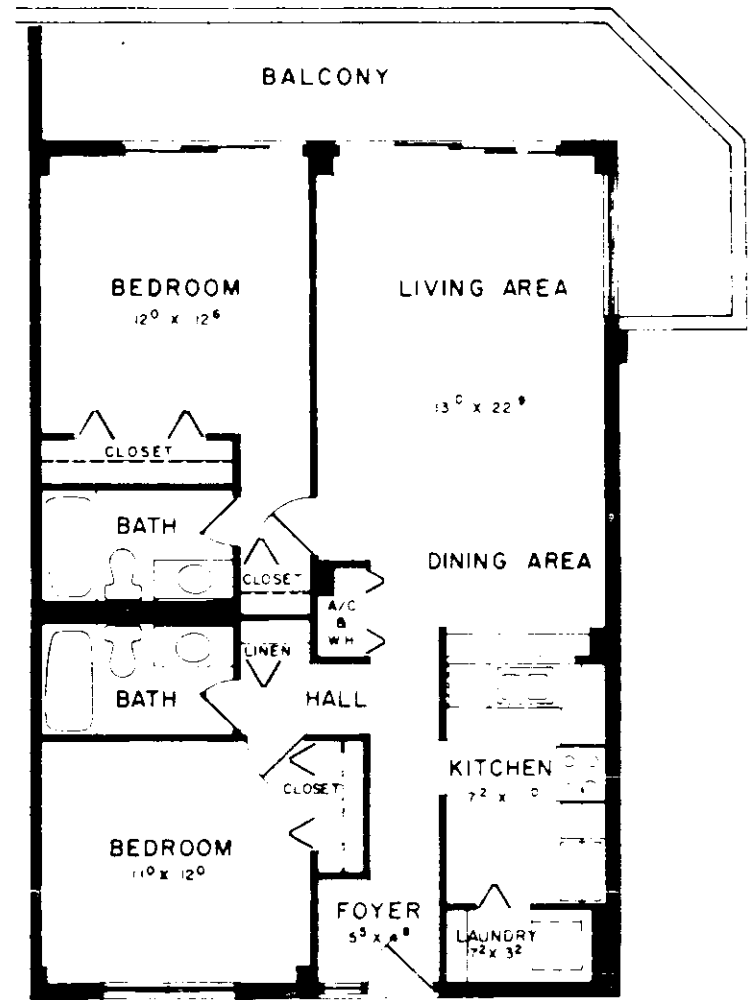
0 5
SCALE IN FEET



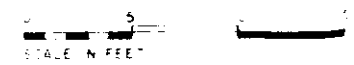
SOUTH SEAS NORTH CONDOMINIUM OF MARCO ISLAND



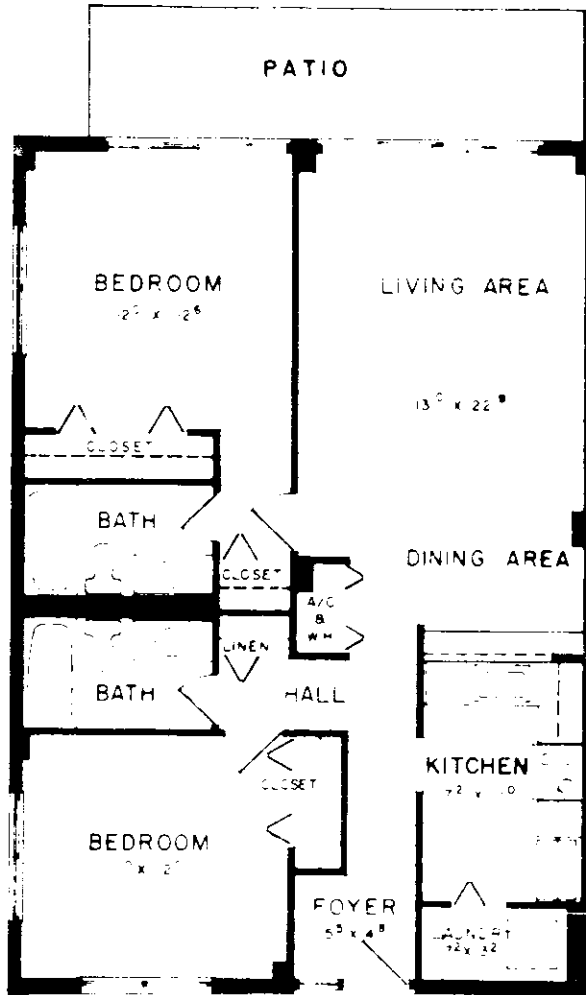
APARTMENT 703 AS SHOWN
709 - REVERSE



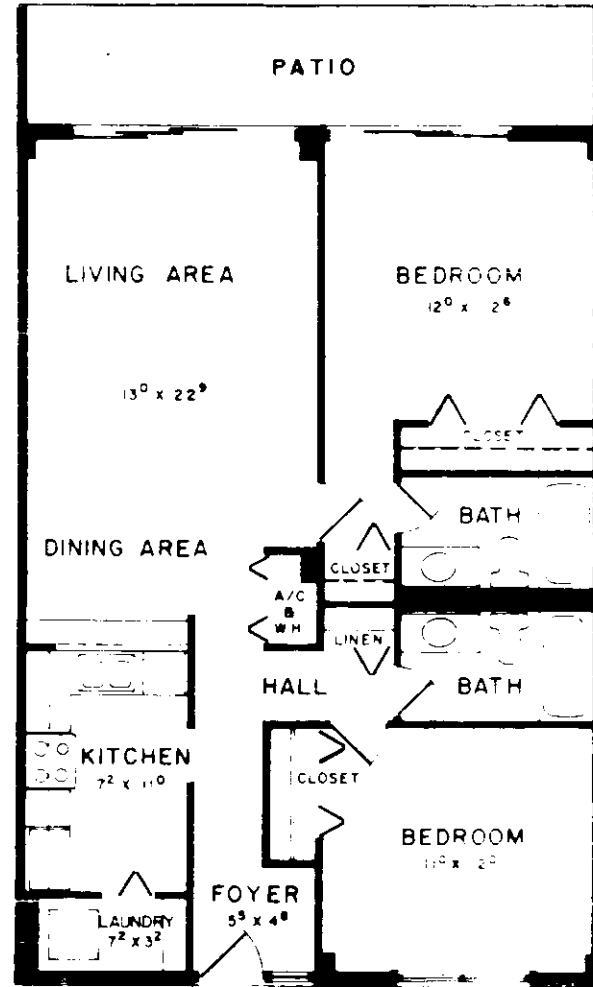
APARTMENT 704 AS SHOWN
710 - REVERSE



SOUTH SEAS NORTH CONDOMINIUM OF MARCO ISLAND



APARTMENT 105 AS SHOWN
 APARTMENT 111 REVERSE



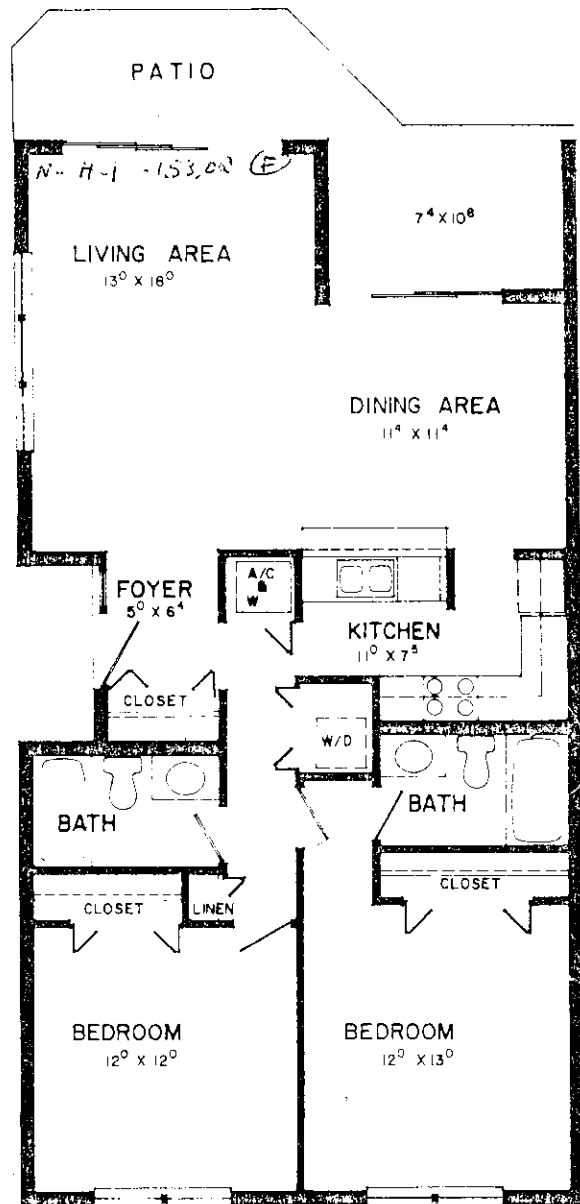
APARTMENT 106 AS SHOWN
 APARTMENT 112 REVERSE

0 5
 SCALE IN FEET

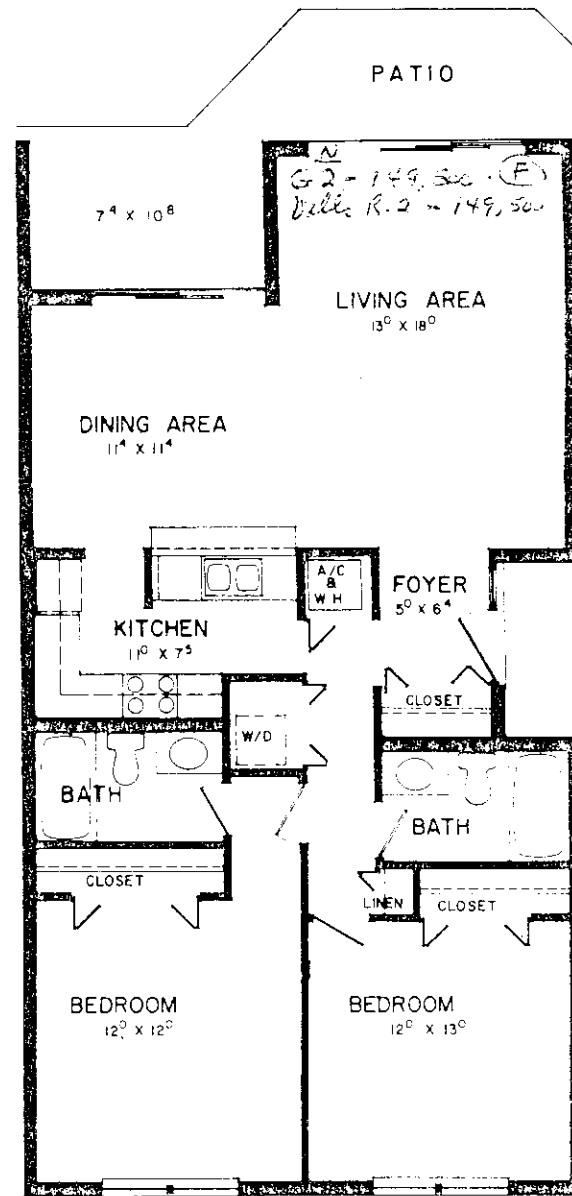


SOUTH SEAS EAST CONDOMINIUM OF MARCO ISLAND

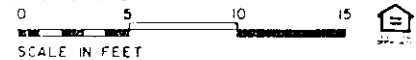
F-2 - 1100^{sq}
 G-4 - 1300^{sq}
 H-2 - 1300^{sq}
 I-1 - 1300^{sq}
 J-3 - 1131^{sq}
 K-3 - 1150^{sq}
 L-2 - 1100^{sq}
 M-1 - 1300^{sq}
 N-4 - 1138^{sq}
 O-4 - 1135^{sq}
 P-4 - 1300^{sq}
 Q-1 - 1131^{sq}
 R-3 - 1300^{sq}



APARTMENT 1 - BUILDINGS E, G, J, L, P, R - AS SHOWN
 APARTMENT 2 - BUILDINGS D, F, H, K, M, Q - REVERSE



APARTMENT 2 - BUILDINGS E, G, J, L, N, P, R - AS SHOWN
 APARTMENT 1 - BUILDINGS D, F, H, K, M, N, Q - REVERSE



SOUTH SEAS NORTH CONDOMINIUM OF MARCO ISLAND



APARTMENT 3 - BUILDINGS C, F, J, L, N, R - AS SHOWN
 APARTMENT 4 - BUILDINGS B, D, G, K, M, P - REVERSE



APARTMENT 4 - BUILDINGS C, E, F, H, J, L, N, Q, R - AS SHOWN
 APARTMENT 3 - BUILDINGS B, D, E, G, H, K, M, P, Q - REVERSE

