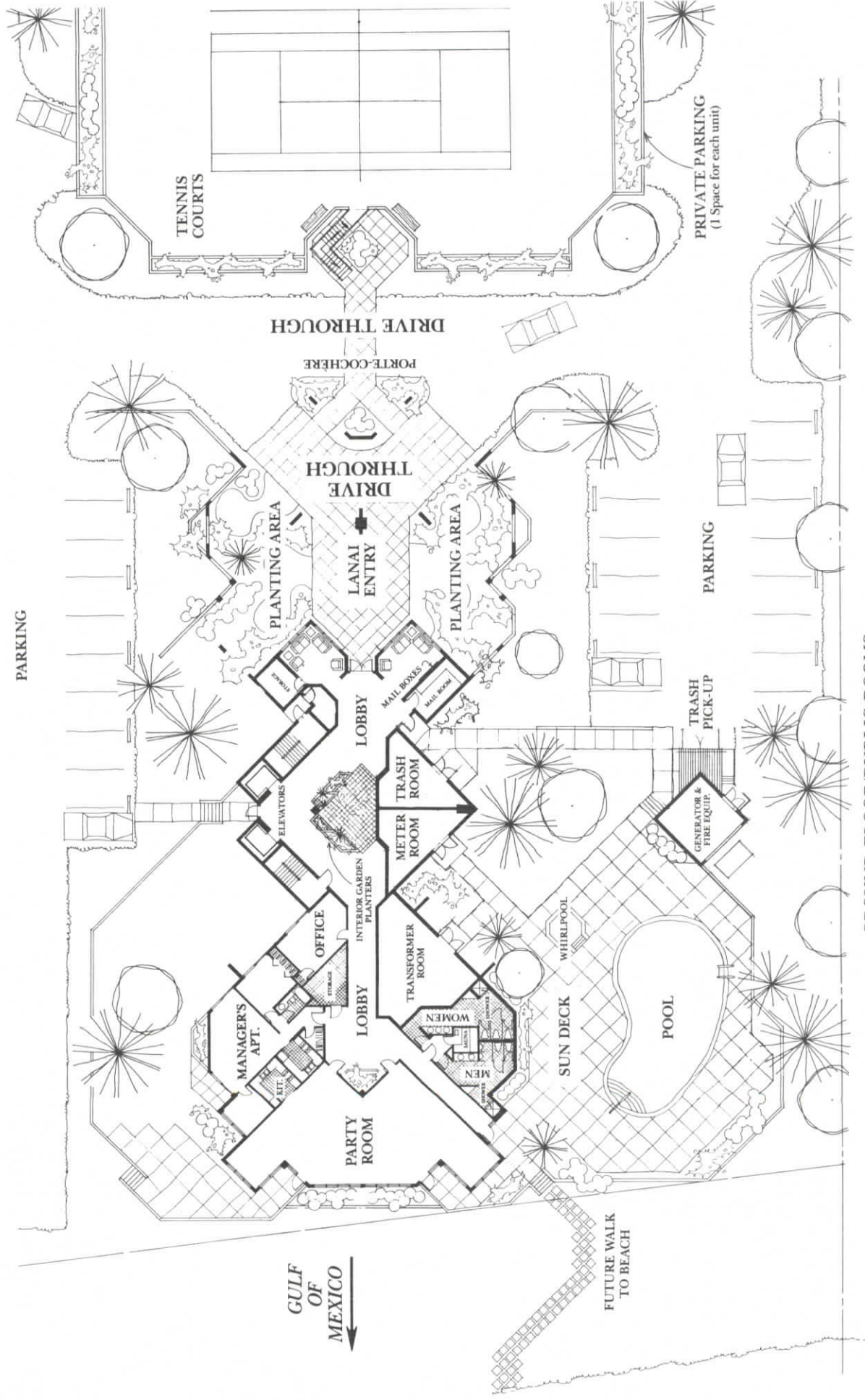


# The Sandpiper

A CONDOMINIUM ON MARCO ISLAND/FLORIDA

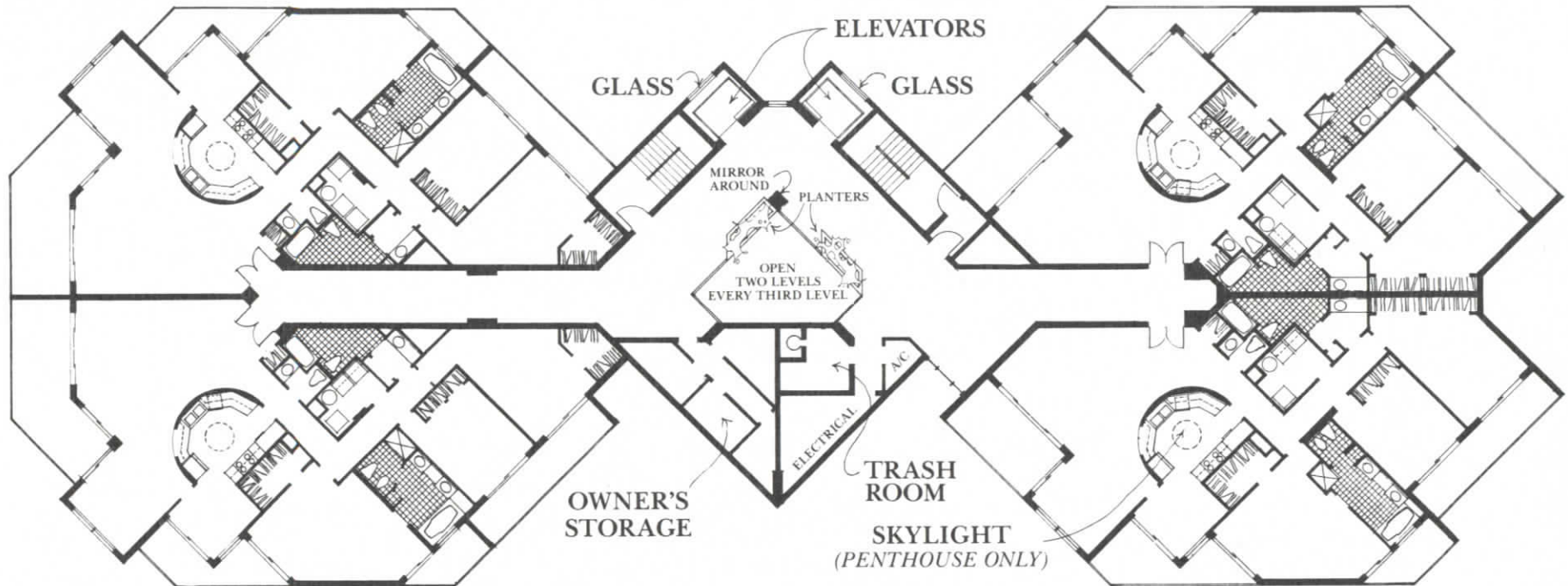


GROUND FLOOR/PUBLIC ROOMS

The SANDPIPER presents you with a statement of style, individuality and elegance. Designed to give everyone a view of the Gulf and the Island. Each window or balcony offers a beautiful vista of each.

*GULFBREEZE/North*  
 UNITS: 102-1802  
 PENTHOUSE: P-1902

*GULFVIEW/North*  
 UNITS: 103-1803  
 PENTHOUSE: P-1903



*GULFBREEZE/South*  
 UNITS: 101-1801  
 PENTHOUSE: P-1901

*GULFVIEW/South*  
 UNITS: 104-1804  
 PENTHOUSE: P-1904

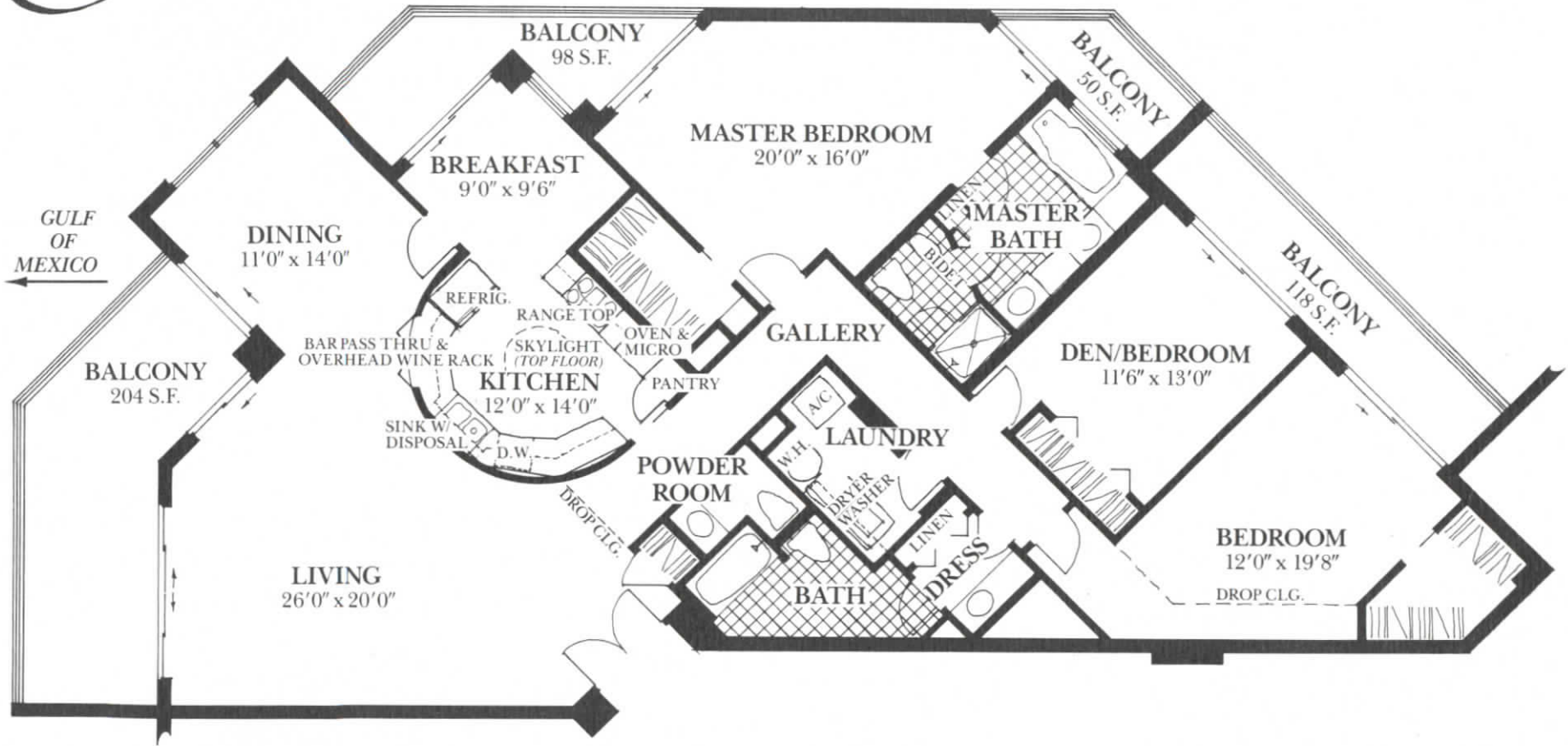
**TYPICAL FLOOR PLAN**  
*Levels 1-19/Penthouse Level*

Exclusivity is assured. Each tower has only two condominiums per floor, serviced by glass walled elevators in a connecting lobby. Each third level features a lushly planted open atrium, with glassed railings around the two open levels.

Facilities include a party room with fully equipped kitchen, large free form pool, Whirlpool, 3 regulation tennis courts, men's and women's showers, dressing rooms and sauna. Also, there is a grocery cart storage room, bicycle racks, and covered 72 car parking.

# The Sandpiper

A CONDOMINIUM ON MARCO ISLAND/FLORIDA



**The GULFBREEZE:**

Living Area 2171 Square Feet  
Balcony Area 470 Square Feet

**Gulfbreeze – North**

Units: 102 through 1802  
Penthouse: P-1902

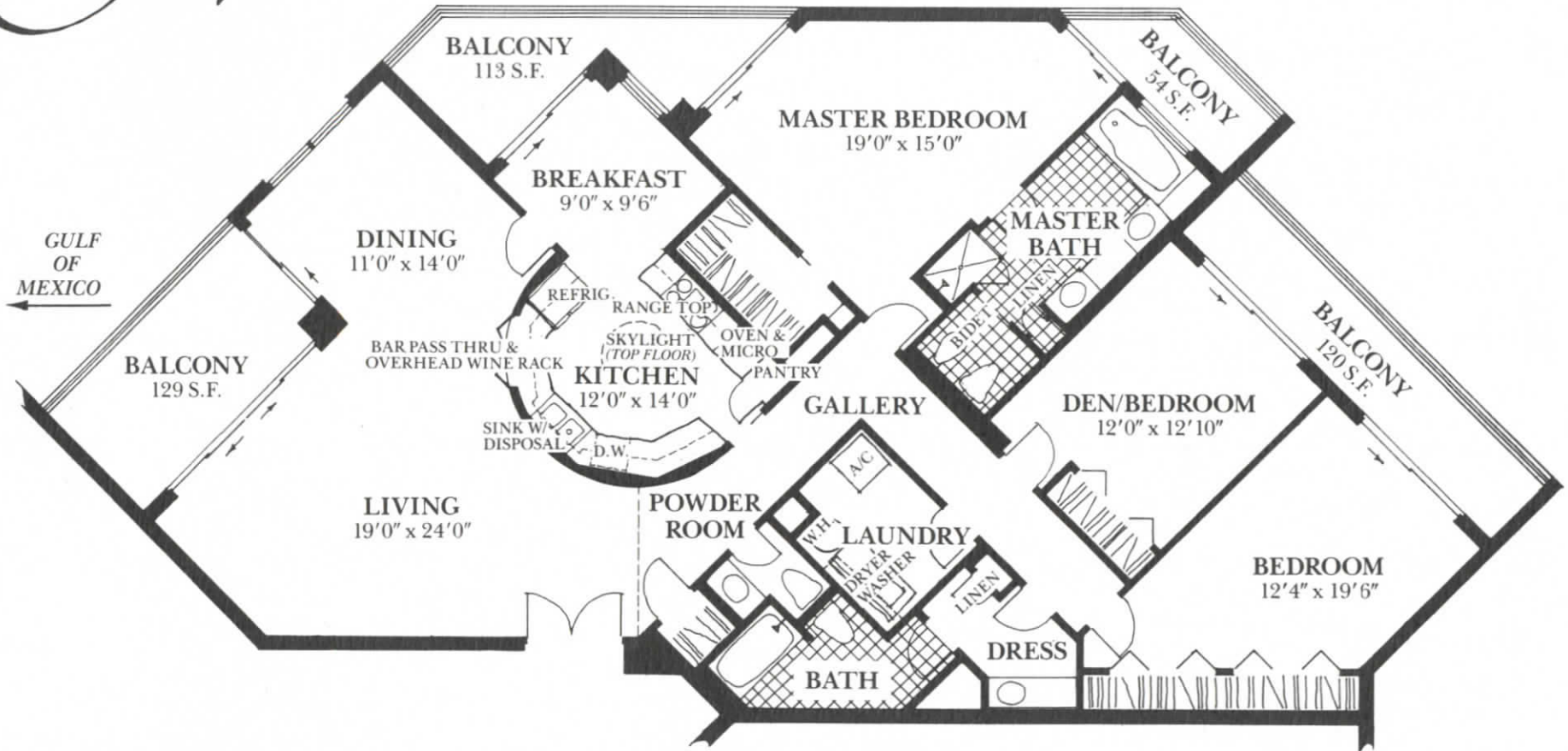
**Gulfbreeze – South**

Units: 101 through 1801  
Penthouse: P-1901

The Gulfbreeze is directly on the water, with spectacular scenery on all sides from 4 balconies. Separate glassed-in breakfast and dining rooms. Curved, European design kitchen. Cultured marble in all baths. Double main entry doors. Plus, a large beautiful five walled master bedroom. The most elegant for the most successful.

# *The Sandpiper*

A CONDOMINIUM ON MARCO ISLAND/FLORIDA



*The GULFVIEW:*

Living Area 2071 Square Feet  
Balcony Area 416 Square Feet

Gulfview – North

Units: 103 through 1803  
Penthouse: P-1903

Gulfview – South

Units: 104 through 1804  
Penthouse: P-1904

The Gulfview is nearly surrounded by glass walls and four balconies for you to enjoy the scenery from morning's glow on the bay to sunsets in the Gulf. A unique, curved European design kitchen. Cultured marble tubs and vanities. Impressive double entry doors. Coded electronic security. Oversized rooms. The most elegant for the most successful.