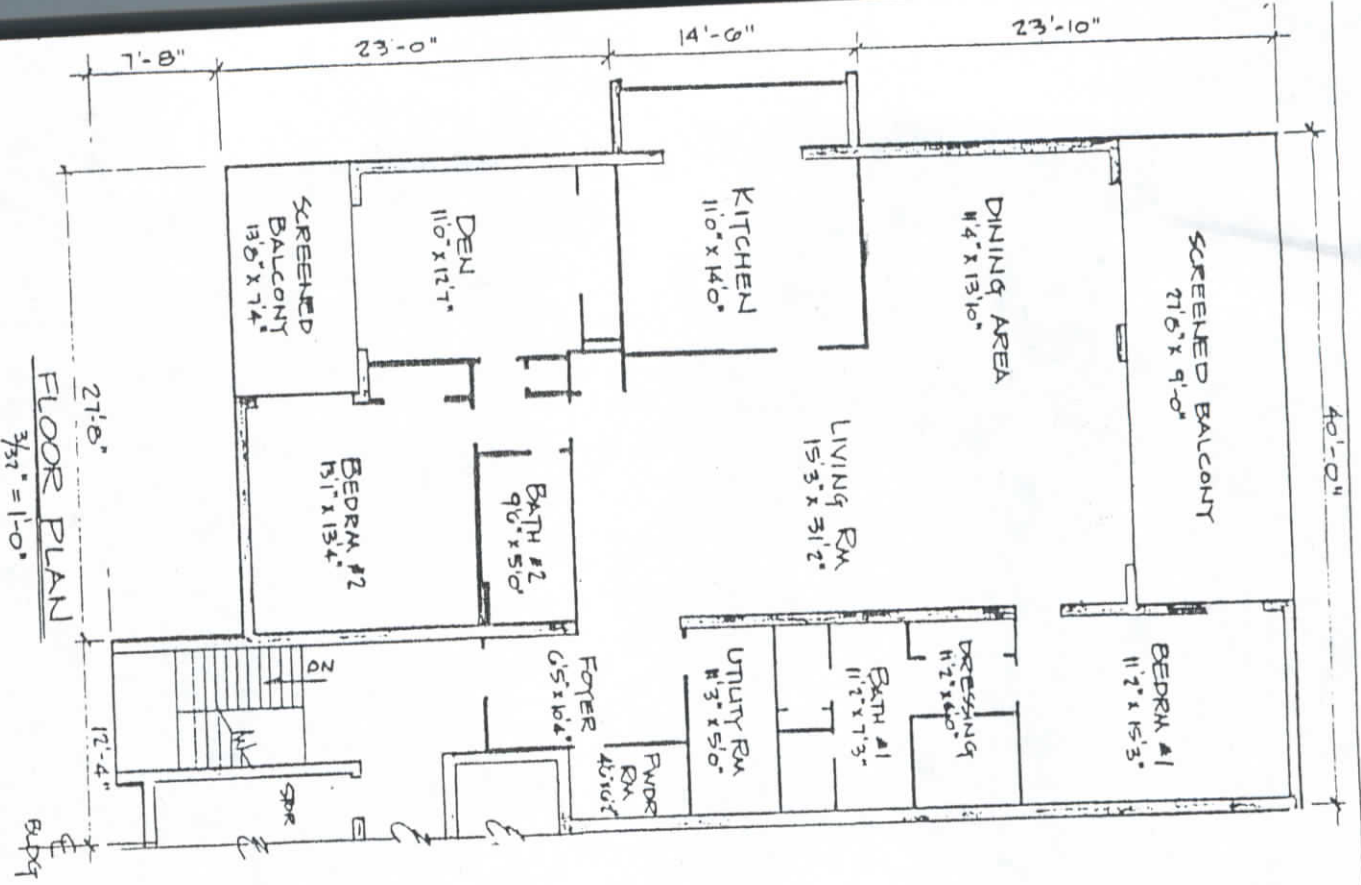


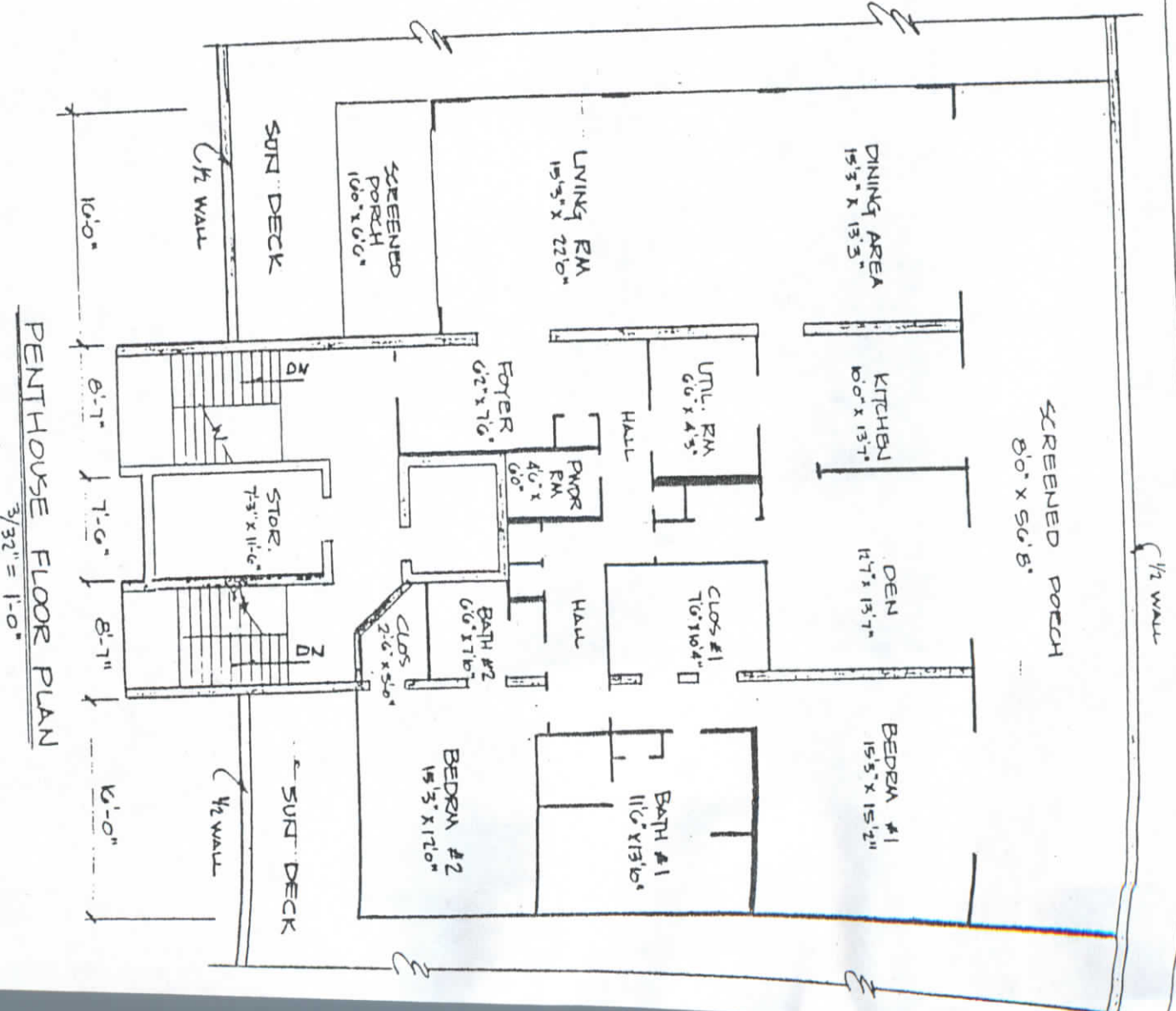
PROPOSED
THE PANAMA CLUB,

JAMES E. HIRST & ASSOCIATES, INC.
Civil & Structural Engineers
P.O. Box 1042



FLOOR PLAN

TYPICAL PLAN UNITS 201, 301, 401
UNITS 202, 302, 402 REVERSE.



PENTHOUSE FLOOR PLAN

$\frac{3}{32}'' = 1'-0''$