

GULF OF MEXICO

COZUMEL

FUTURE SITE OF COROZOL

FUTURE SITE OF BELIZE

BEACH

TAMPICO

MONTERREY

SHAW ISLAND

CAXAMBIAS PASS

MÉRIDA

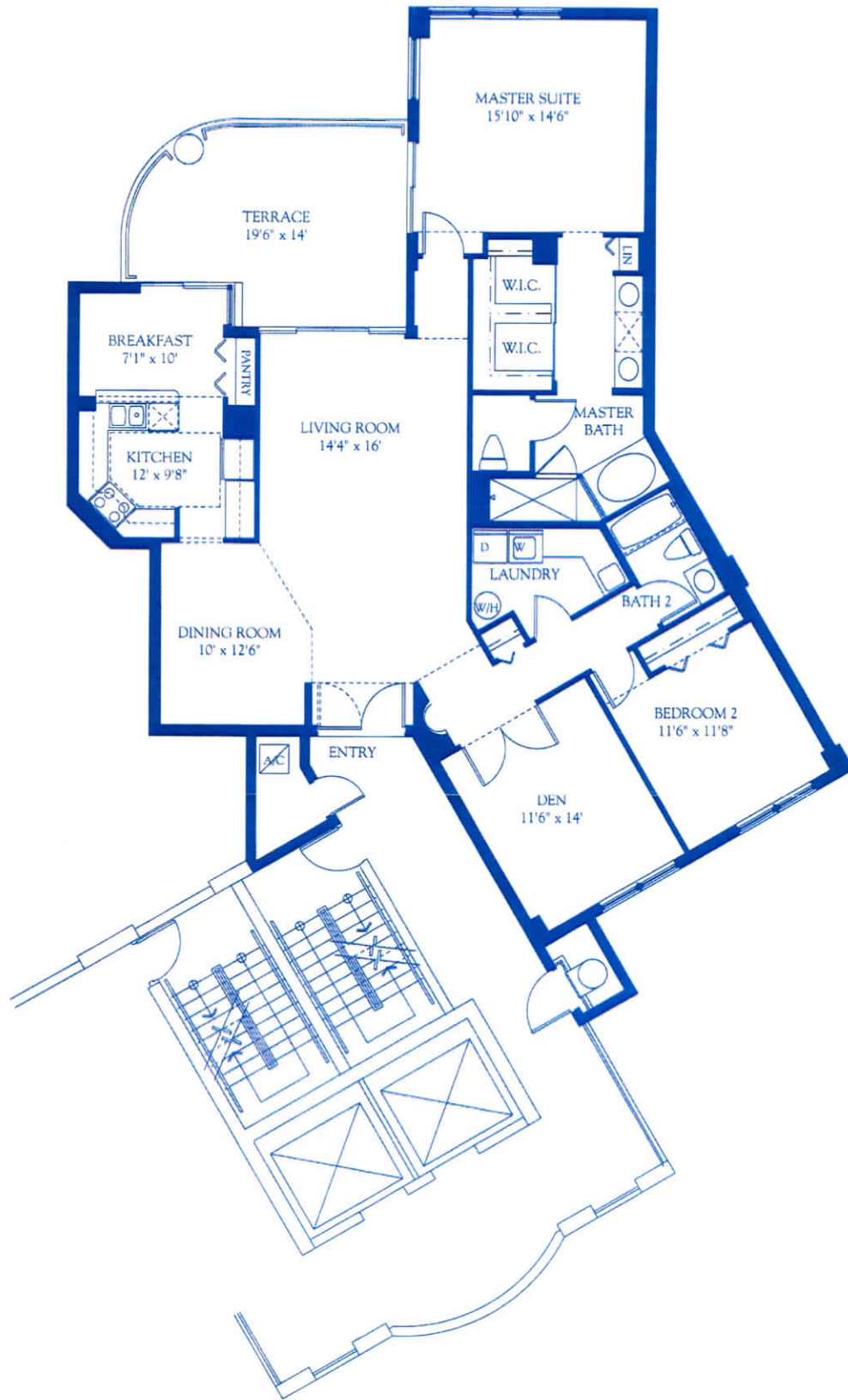


CAPE MARCO

SITE PLAN

Site plan is an artist's conception and not necessarily to scale. Plan may be modified by the developer without prior notice or obligations.





RESIDENCE A	
AIR CONDITIONED	1,820
TERRACE	238
TOTAL	2,058

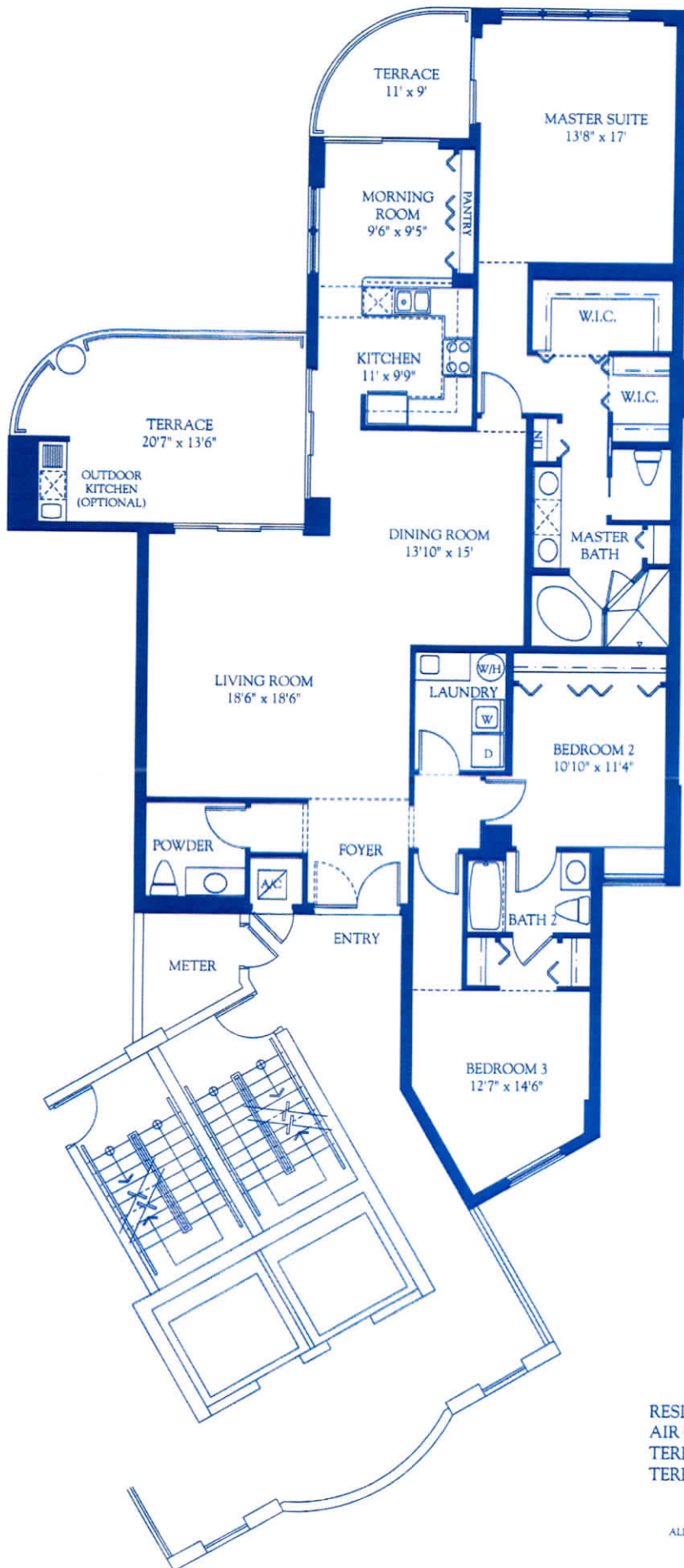
ALL DIMENSIONS ARE APPROXIMATE AND MAY VARY



RESIDENCE B	1,978
AIR CONDITIONED	224
TERRACE	

TOTAL 2,202

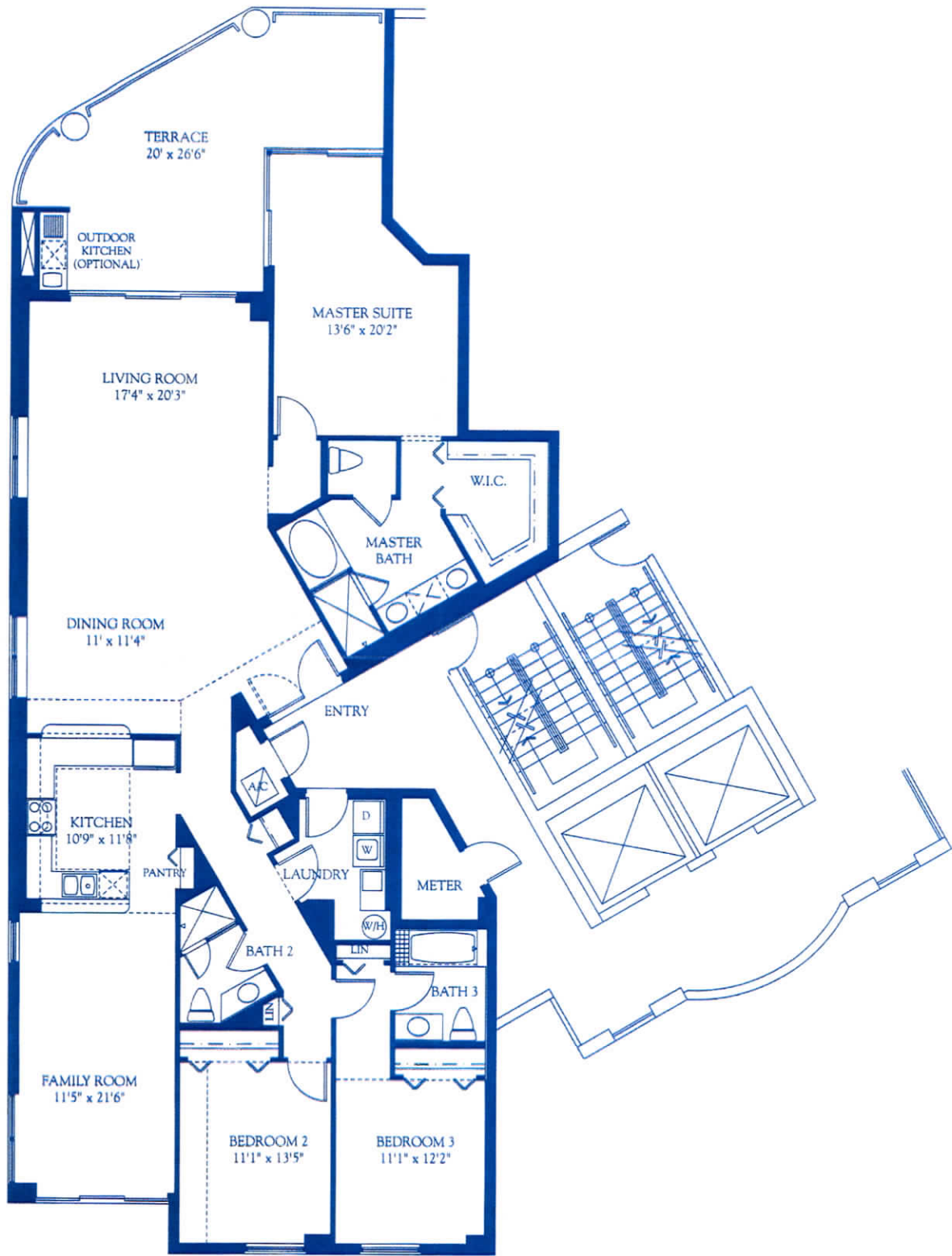
ALL DIMENSIONS ARE APPROXIMATE AND MAY VARY



RESIDENCE C	
AIR CONDITIONED	2,112
TERRACE	270
TERRACE	86

TOTAL 2,468

ALL DIMENSIONS ARE APPROXIMATE AND MAY VARY



RESIDENCE D
 AIR CONDITIONED
 TERRACE

2,451
 375

TOTAL 2,826

ALL DIMENSIONS ARE APPROXIMATE AND MAY VARY