



“Mariners Palm Harbor” 7 Condominiums
908 Panama Ct., Marco Island, Florida USA
MLS-No.: new

Bedrooms per unit	3 bedrooms + den
A/C living area per unit approx.	4,000 sq.ft.
Price per unit starting at	\$ 2,400,000
Euro @ \$1,22	€ 1.967.213



Property Details:

A/C living area per typical unit approx.	4,000 sq.ft.	Total area	5,068 sq.ft.
Unit floor	2 through 8 (Penthouse)	Kitchen/Bath	European style Rotpunkt / Bulthaupt
Bedrooms	3 + den	Garage	Underneath building
Bathrooms	3	Pool	Yes
Extras	Private boat dock available	Availability	2007
Elevator	Private Elevator Access	Price p.unit starting at	\$ 2,400,000

Description:

Mariners Palm Harbor Condominiums will be built on Marco Island's only remaining vacant lot on the water. The project consists of 7 spacious luxury condominiums and combines direct water access to the Gulf of Mexico and walking distance to South Residence Beach. An exclusive one unit per floor design with private elevator access gives you a penthouse feeling on every level. Marco Island is 45 miles south of South West Florida International Airport. It offers a 6 mile long crescent beach for sunbathing, shelling and brilliant sunsets and 100 golf courses within a 50 mile radius. 5 Boat Docks are available at Mariners Palm Harbor, where you could dock your Sail- or Powerboat conveniently behind the building. Pre-Construction sales starts now. Commission free for buyer!

Terms & Conditions:

Availability upon agreement.

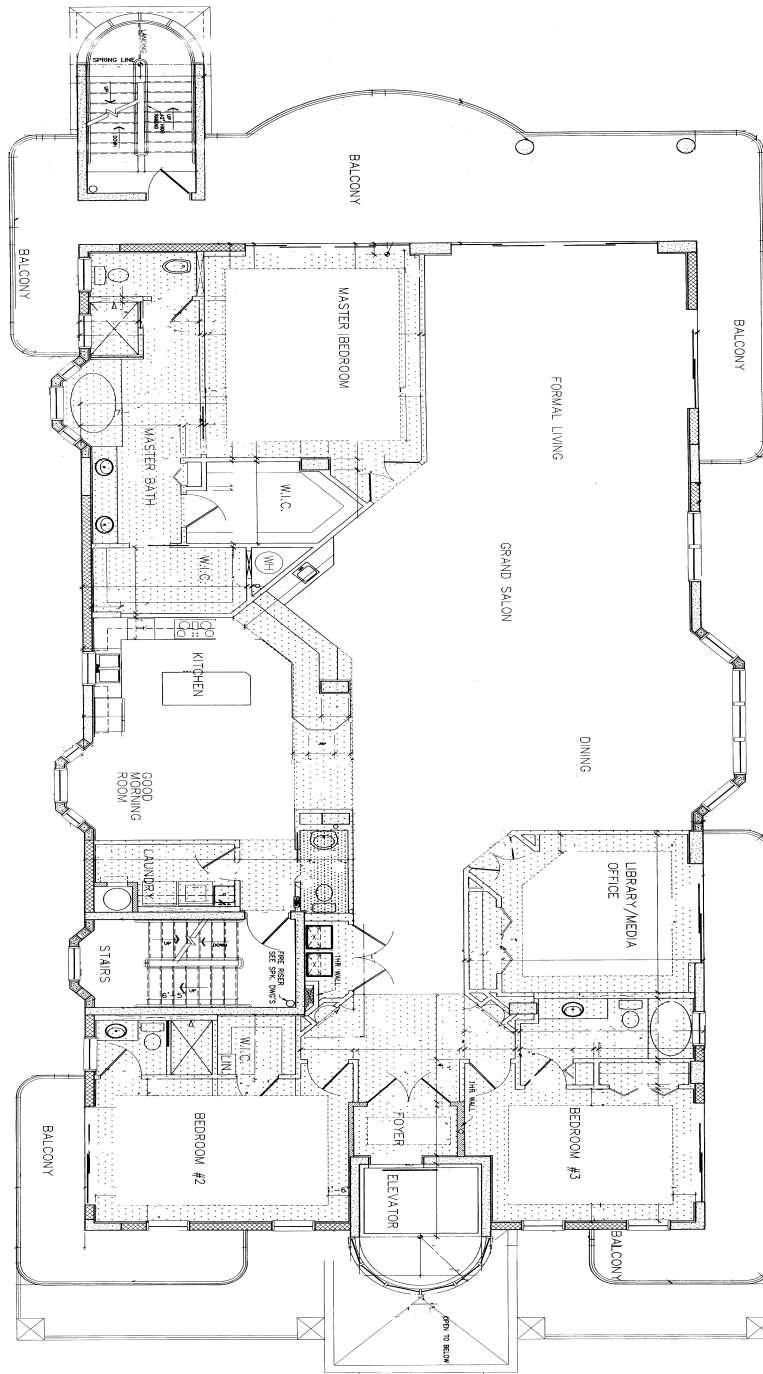
Engel & Völkers does not accept responsibility as the information provided in this brochure is for information only and it is subject to errors, omissions, change of price or withdrawal without notice. Real Estate commission to E&V is paid by seller.

Office Marco Island · P.O. Box 1715 · Marco Island · FL 34146 · USA
 Ph. 239-285-1332 · Fax 239-393-0714 · stefan.bolsen@engelvoelkers.com
 www.engelvoelkers.com



ENGEL & VÖLKERS®

Floorplan



A/C living area	3,974
Lanai	1,094
Total area	5,068

This floor plan is not to scale, no warranty or representation, express or implied is made as to the accuracy of the information contained herein, and same is submitted subject to errors, omissions, change of price, withdrawal without notice an to any special listing conditions imposed by our principals.

Office Marco Island · P.O. Box 1715 · Marco Island · FL 34146 · USA
 Ph. 239-285-1332 · Fax 239-393-0714 · stefan.bolsen@engelvoelkers.com
 www.engelvoelkers.com



Additional Pictures



1) Marco Islands crescent 6 mile beach



2) Canal View



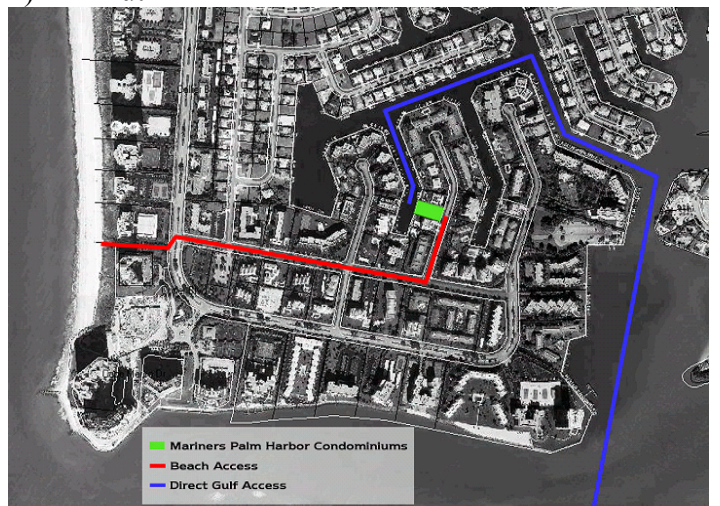
3) Concept boat docks and pool behind building



4) Tiki hut



5) Mid-rise building



6) Beach and Boat Access

Pictures 3) through 5) are from reference building designed by J.D.Allen & Associates Inc., Architects