

NORTH COLLIER BOULEVARD

GREENBRIER STREET



LEGEND:

- 1 ONE BED RM. APT.
- 1R ONE BED RM. APT. (REVERSE)
- 2 ONE BED RM. APT.
- 2R ONE BED RM. APT. (REVERSE)
- 3 TWO BED RM. APT.
- 3R TWO BED RM. APT. (REVERSE)
- 4 TOWNHOUSE. TWO BED RM.
- 4R TOWNHOUSE. TWO BED RM. (REVERSE)

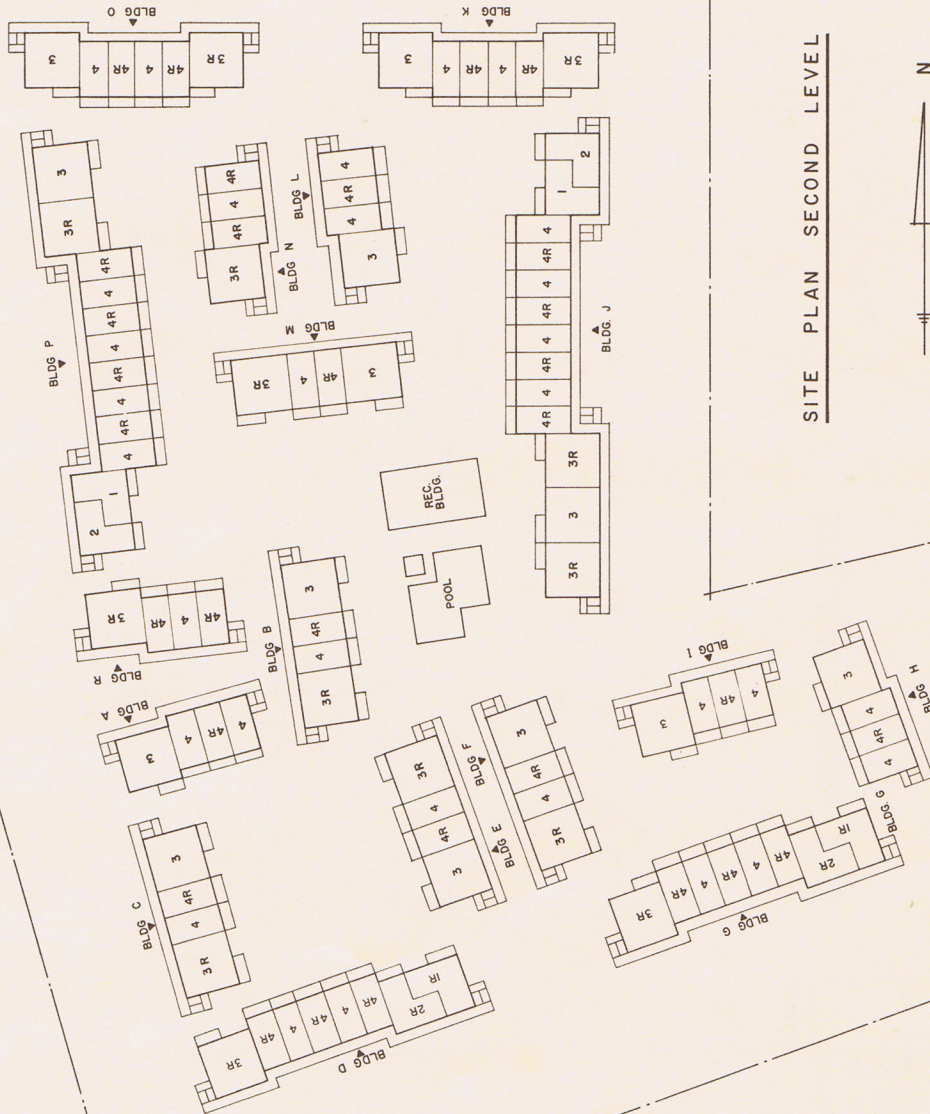
SITE PLAN GROUND LEVEL



ISLAND MANOR APARTMENTS	
MARGO ISLAND	FLORIDA
JAMES E. YENSEL and associates architects and engineers	
3128 S.W. 87th Avenue Miami, Florida PR 864111	
Drawn by: M.D.B.	E.A. Date: 12-16-71
Proj. No.: M-7191	Sheet No.: 4

NORTH COLLIER BOULEVARD

GREENBRIER STREET



LEGEND:

- 1 ONE BED RM. APT.
- 1R ONE BED RM. APT. (REVERSE)
- 2 ONE BED RM. APT.
- 2R ONE BED RM. APT. (REVERSE)
- 3 TWO BED RM. APT.
- 3R TWO BED RM. APT. (REVERSE)
- 4 TOWNHOUSE. TWO BED RM.
- 4R TOWNHOUSE. TWO BED RM. (REVERSE)

SITE PLAN SECOND LEVEL



ISLAND MANOR APARTMENTS		FLORIDA	
MARCO ISLAND		JAMES E. VENSEL and associates	
architects and engineers		2100 S.W. 2nd Avenue Miami, Florida 33135 PH: 864-1111	
Drawn by: R.M.G. & E.A.	Date: 12-16-71	Scale: 1/8" = 1'-0"	Sheet No.: 4

ONE BED ROOM APT.
TYPE 1

BALCONY

LIVING - DINING
13'-5" x 18'-11"

BED ROOM
11'-0" x 10'-1"

CLOS

BATH

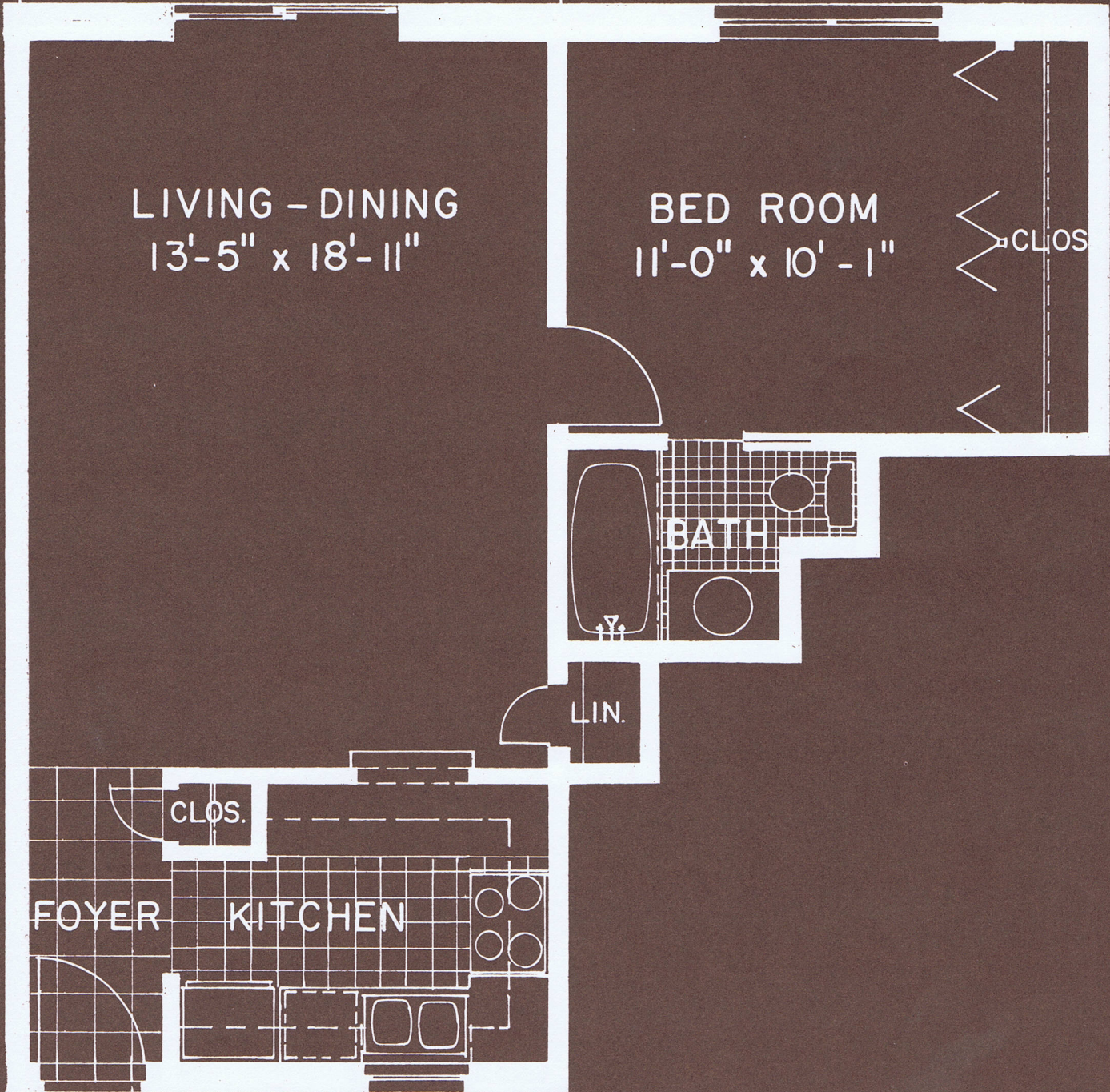
LIN.

CLOS.

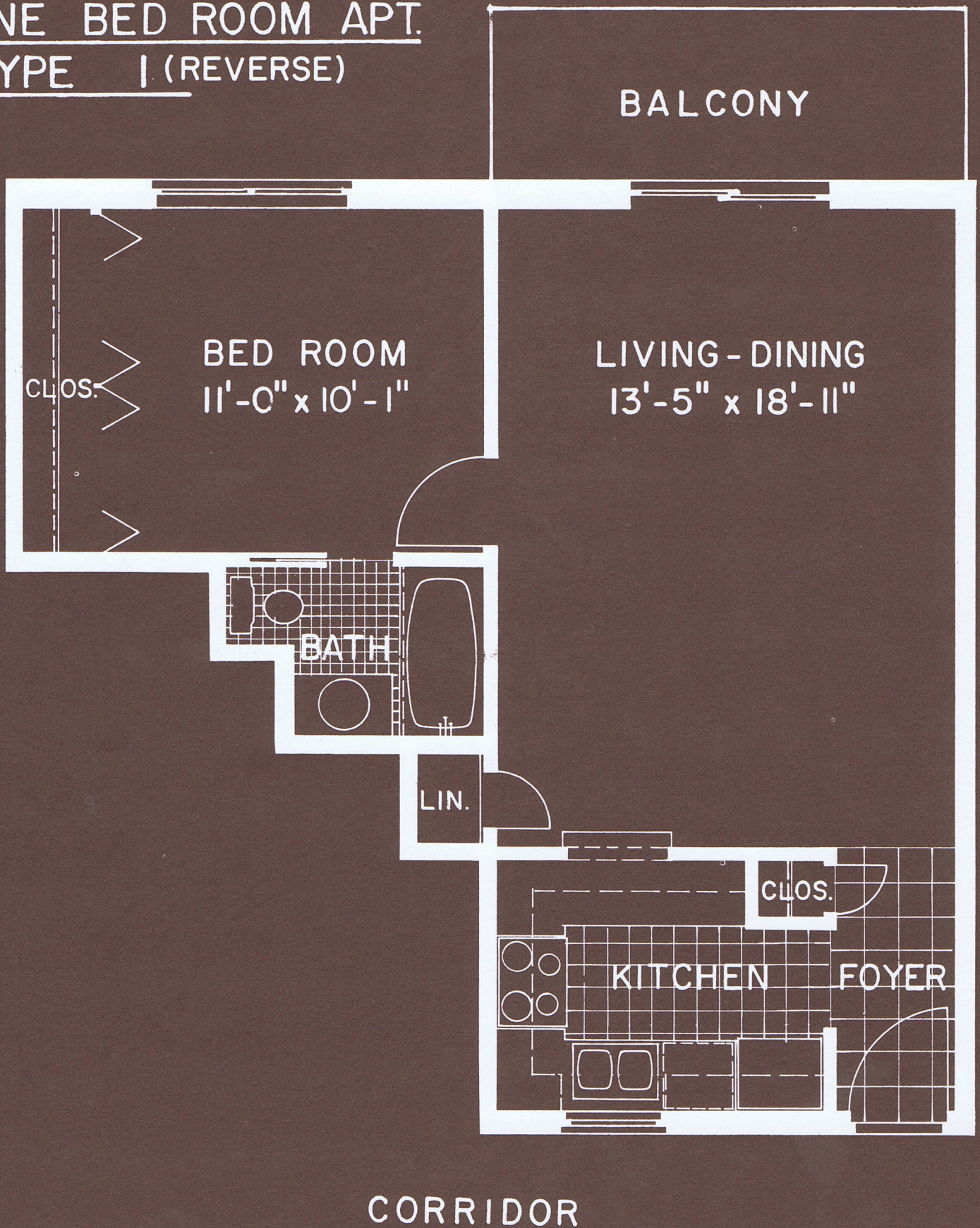
FOYER

KITCHEN

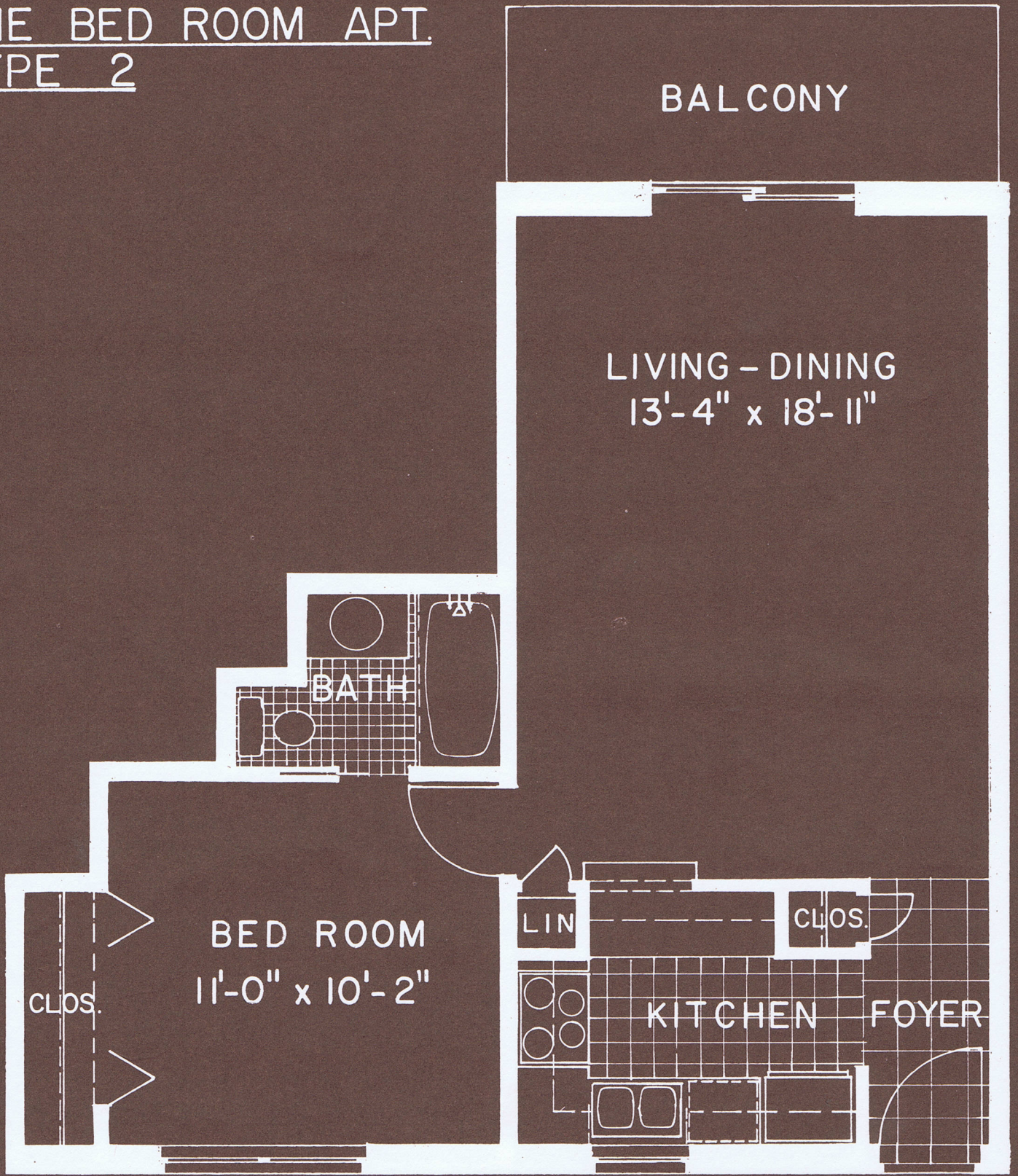
CORRIDOR



ONE BED ROOM APT.
TYPE 1 (REVERSE)



ONE BED ROOM APT.
TYPE 2



BALCONY

LIVING - DINING
13'-4" x 18'-11"

BATH

BED ROOM
11'-0" x 10'-2"

CLOS.

LIN

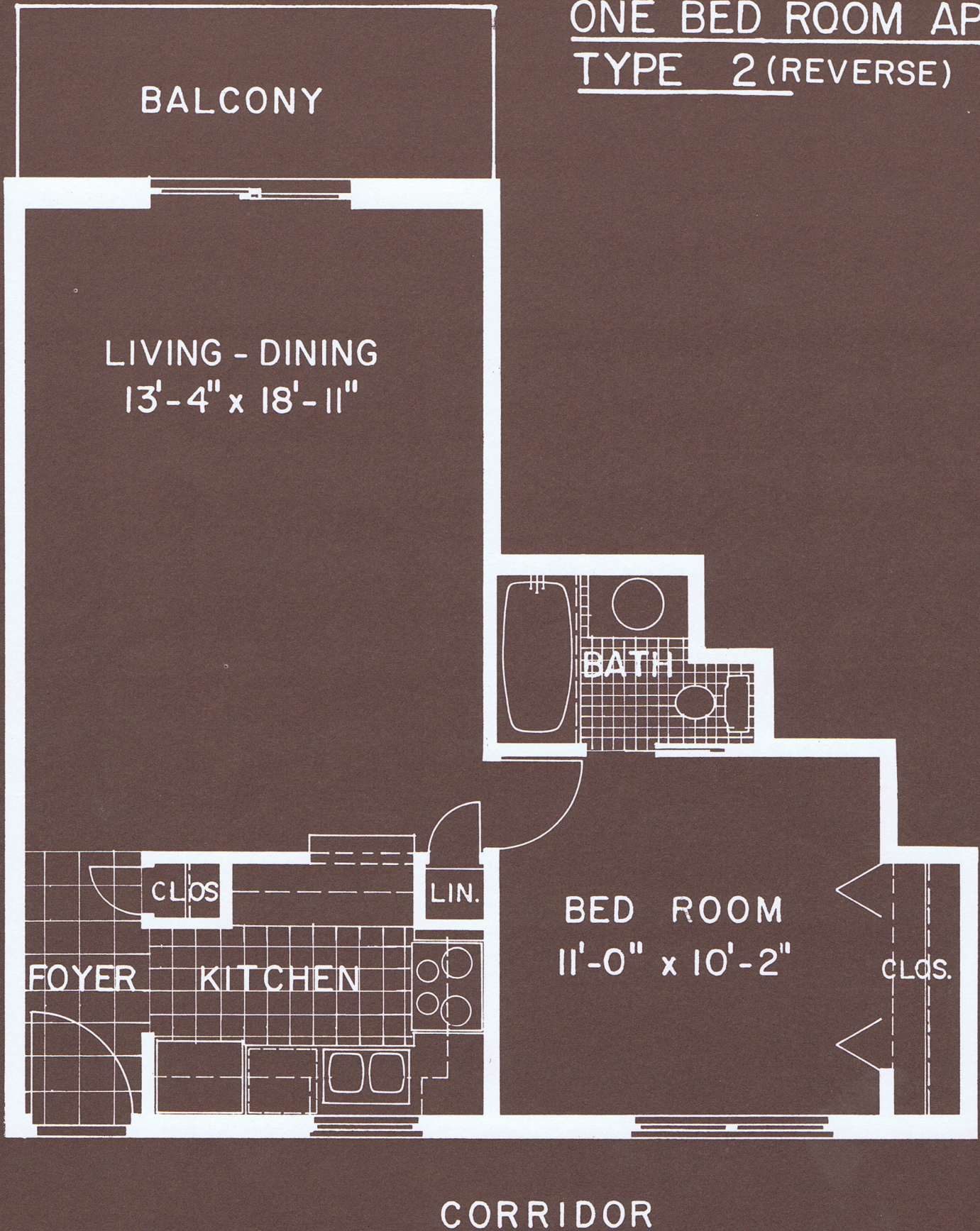
CLOS.

KITCHEN

FOYER

CORRIDOR

ONE BED ROOM APT.
TYPE 2 (REVERSE)



TWO BED ROOM APT.
TYPE 3

BALCONY

LIVING - DINING
13'-5" x 18'-9"

CLOS. BED ROOM No 1
11'-0" x 10'-1"

LIN.

HALL

BATH

LIN.

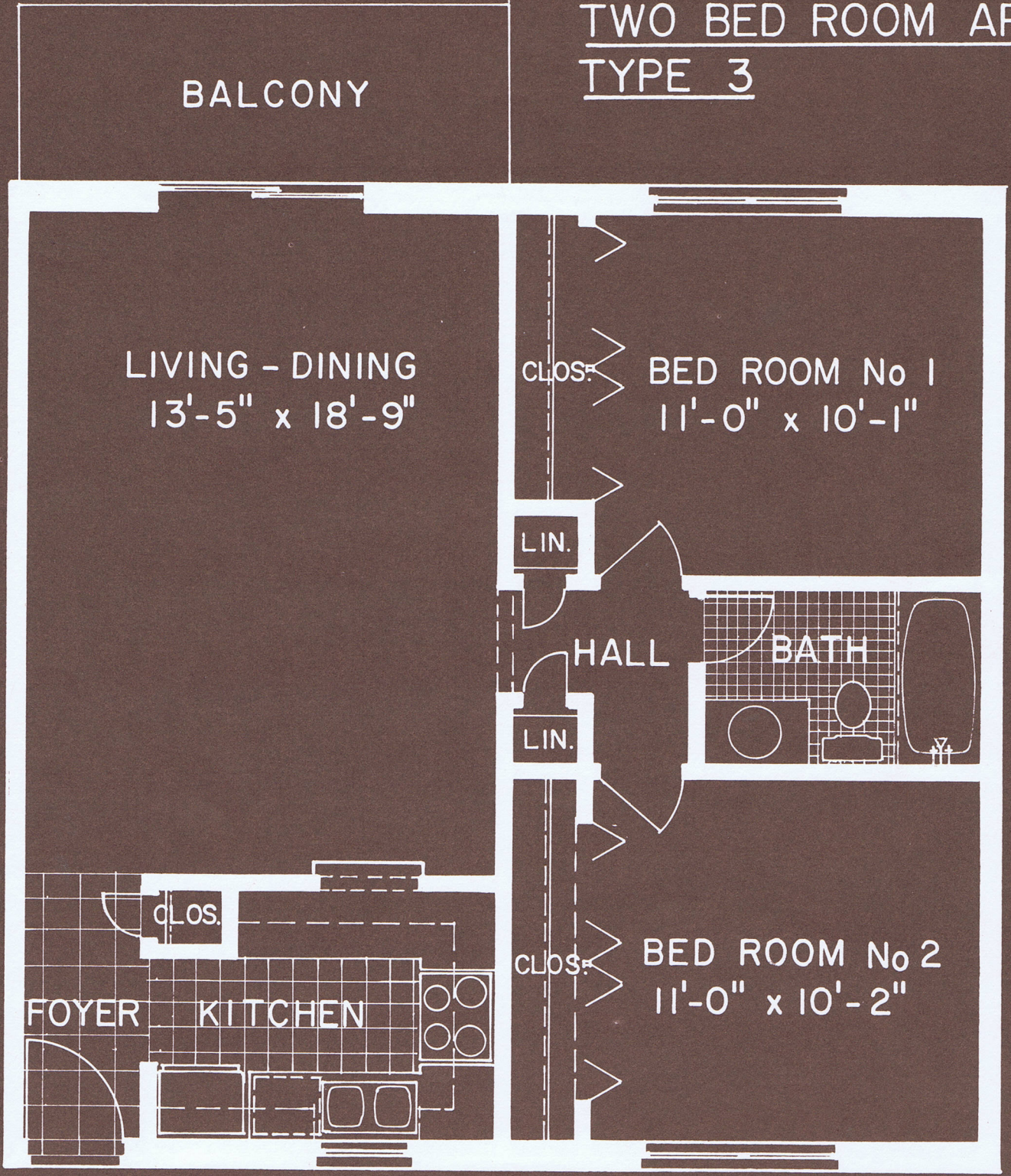
CLOS.

FOYER

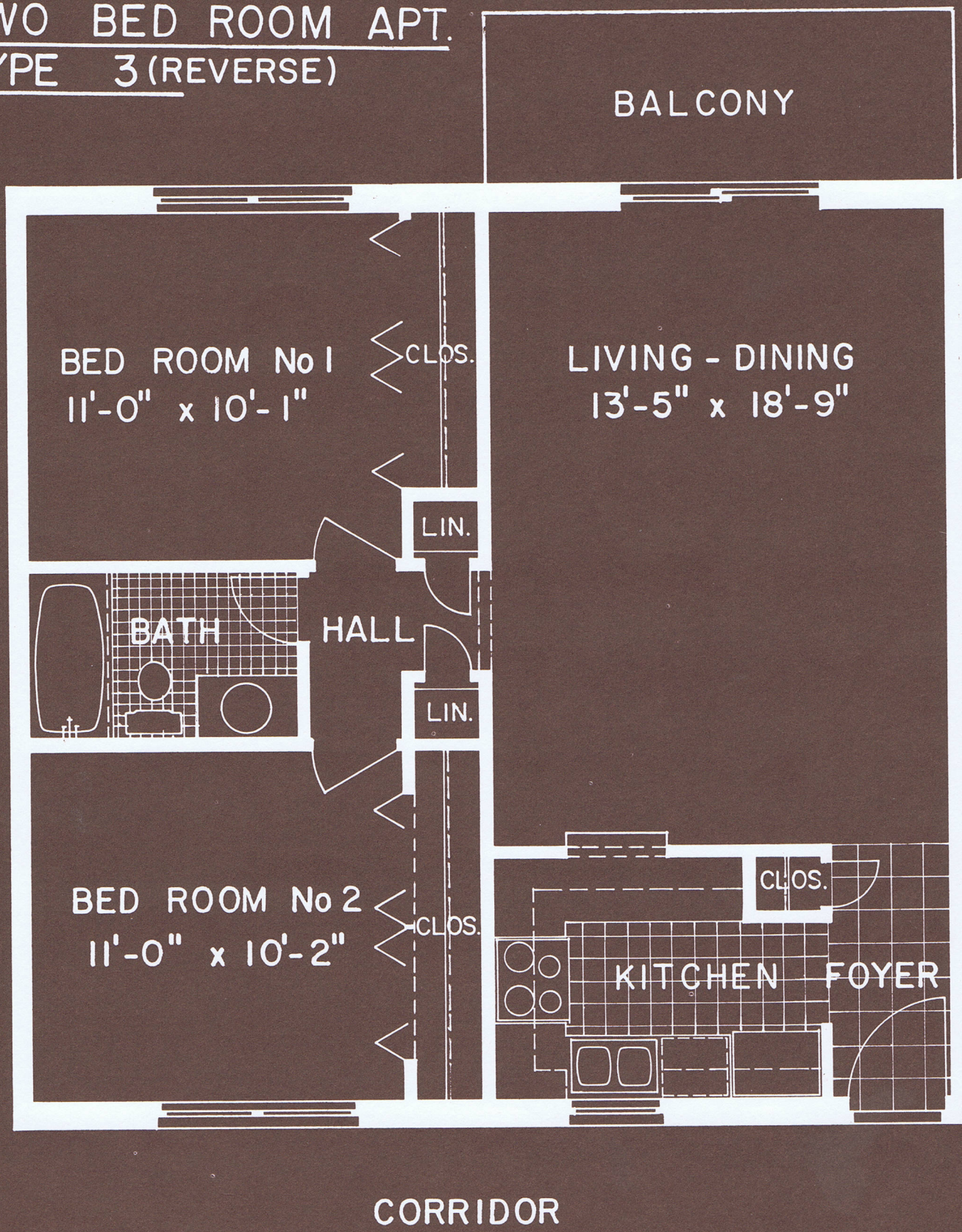
KITCHEN

CLOS. BED ROOM No 2
11'-0" x 10'-2"

CORRIDOR



TWO BED ROOM APT.
TYPE 3 (REVERSE)

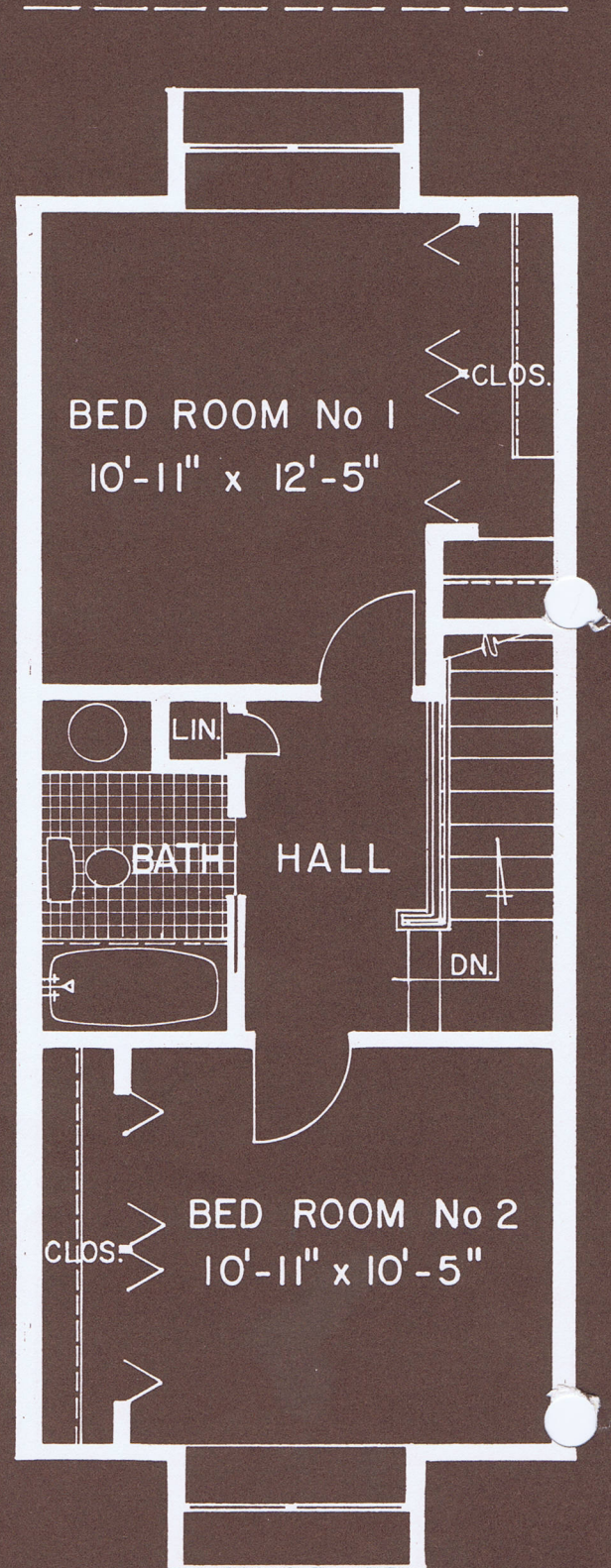
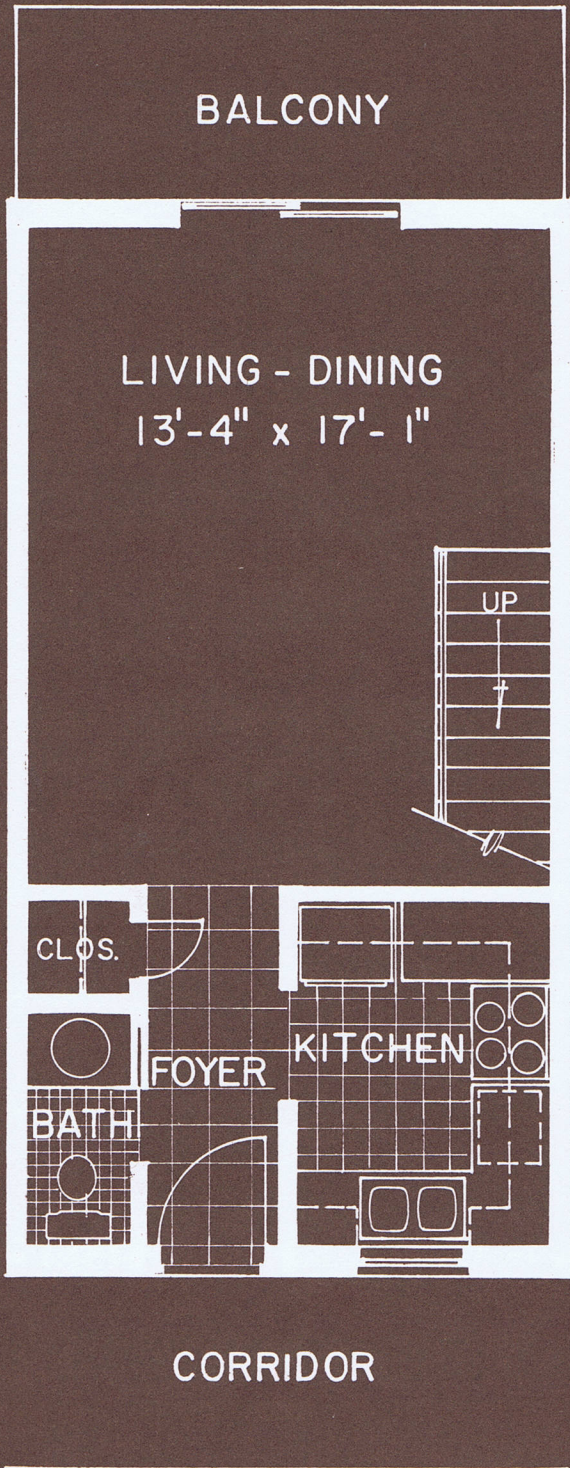


TOWNHOUSE APT.

TYPE 4

LOWER LEVEL (SECOND FLOOR)

UPPER LEVEL (THIRD FLOOR)



TOWNHOUSE APT.
TYPE 4(REVERSE)

UPPER LEVEL (THIRD FLOOR)

LOWER LEVEL (SECOND FLOOR)

