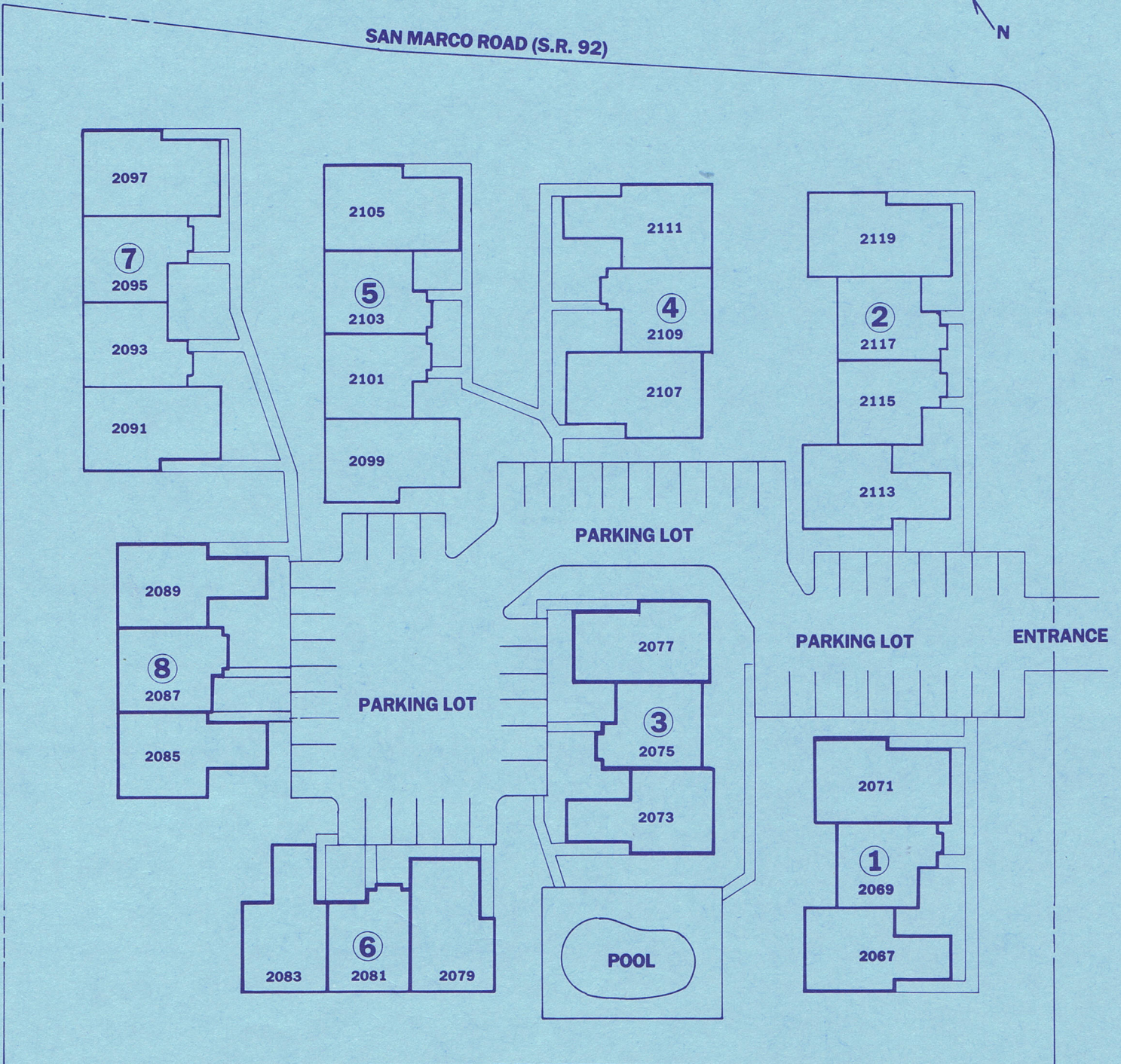




# SITE PLAN

# The Estuary II OF MARCO

SAN MARCO ROAD (S.R. 92)



ORAL REPRESENTATIONS CANNOT BE RELIED UPON AS CORRECTLY STATING REPRESENTATIONS OF THE DEVELOPER. FOR CORRECT REPRESENTATIONS, MAKE REFERENCE TO THIS BROCHURE AND TO THE DOCUMENTS REQUIRED BY SECTION 718.503, FLORIDA STATUTES, TO BE FURNISHED BY A DEVELOPER TO A BUYER OR LESSEE.

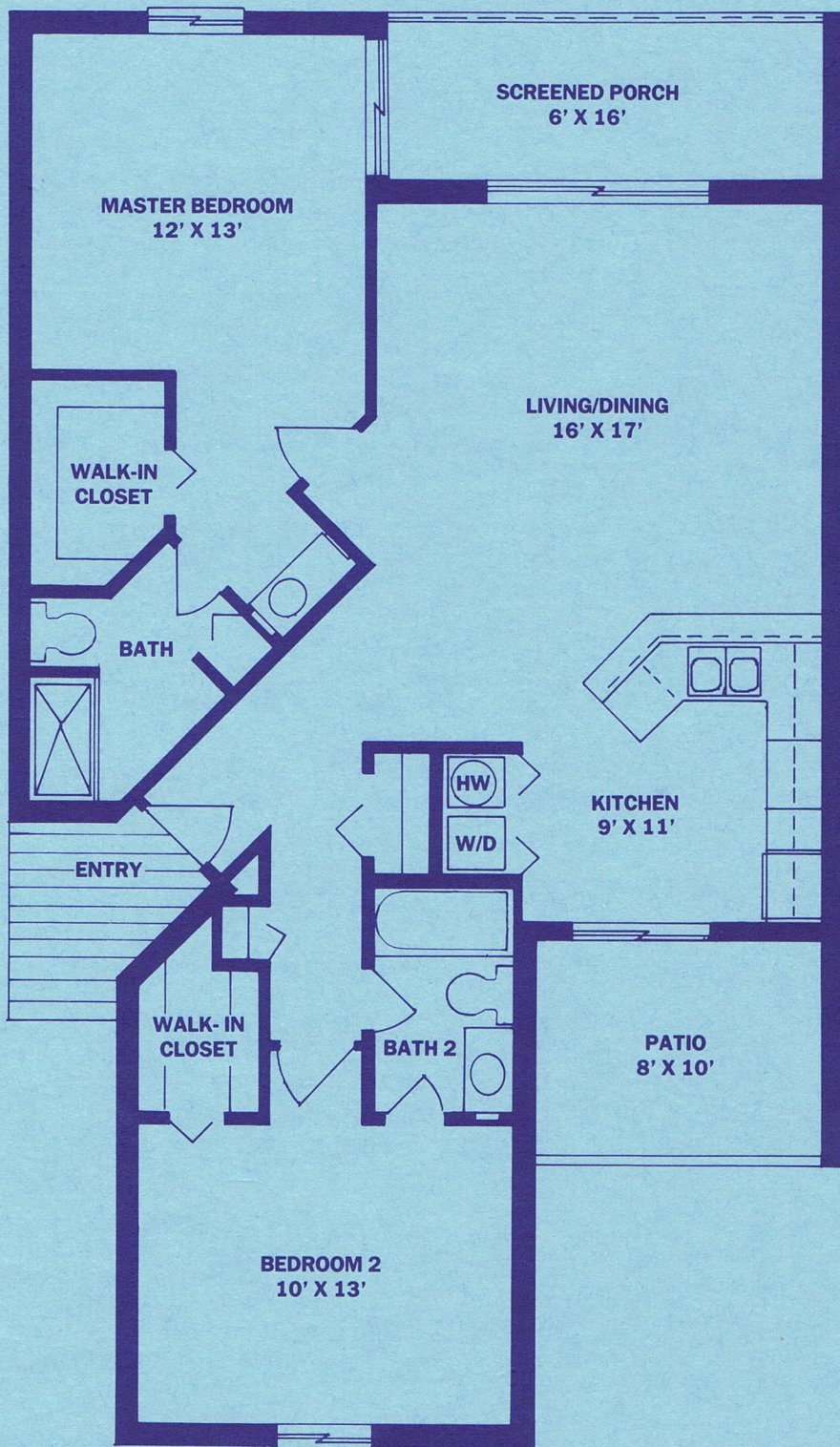


# FLOOR PLAN A

# The Estuary II

OF MARCO

AIR CONDITIONED AREA 1,000 sq.ft.  
TOTAL LIVING SPACE 1,110 sq.ft.



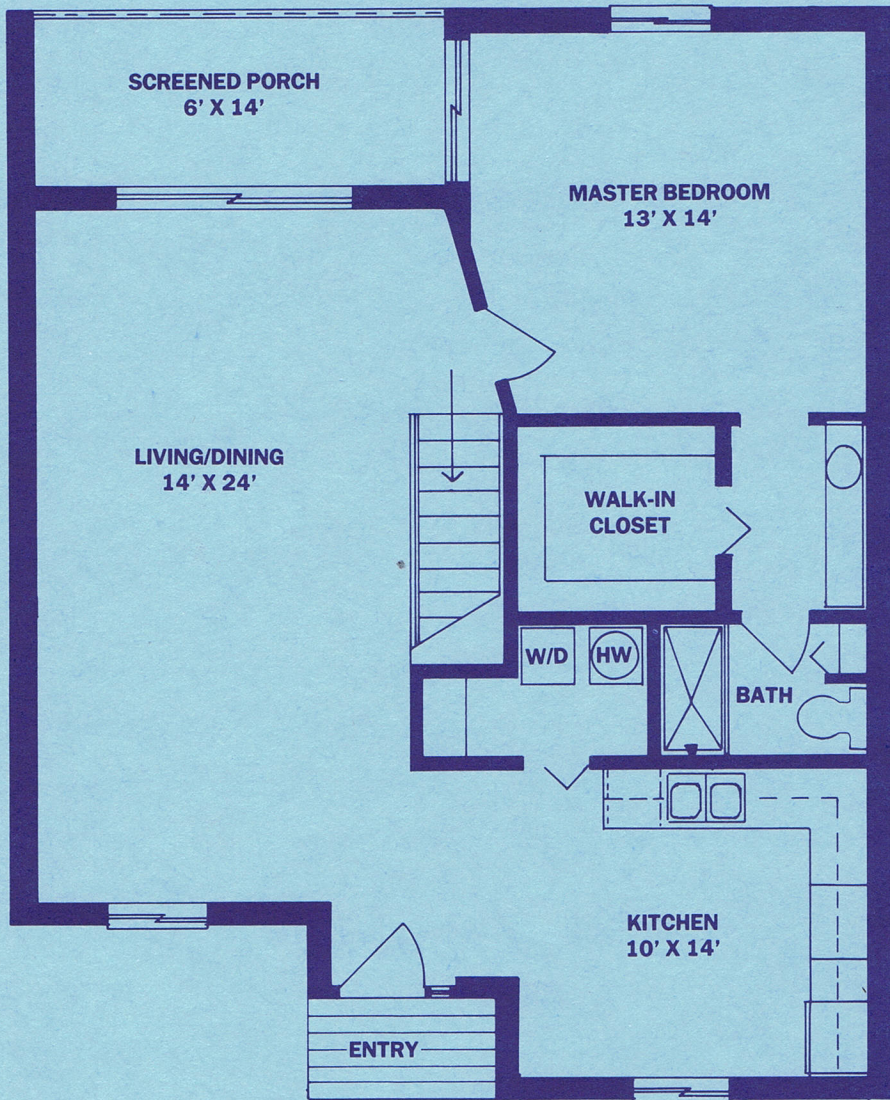
All dimensions are approximate.



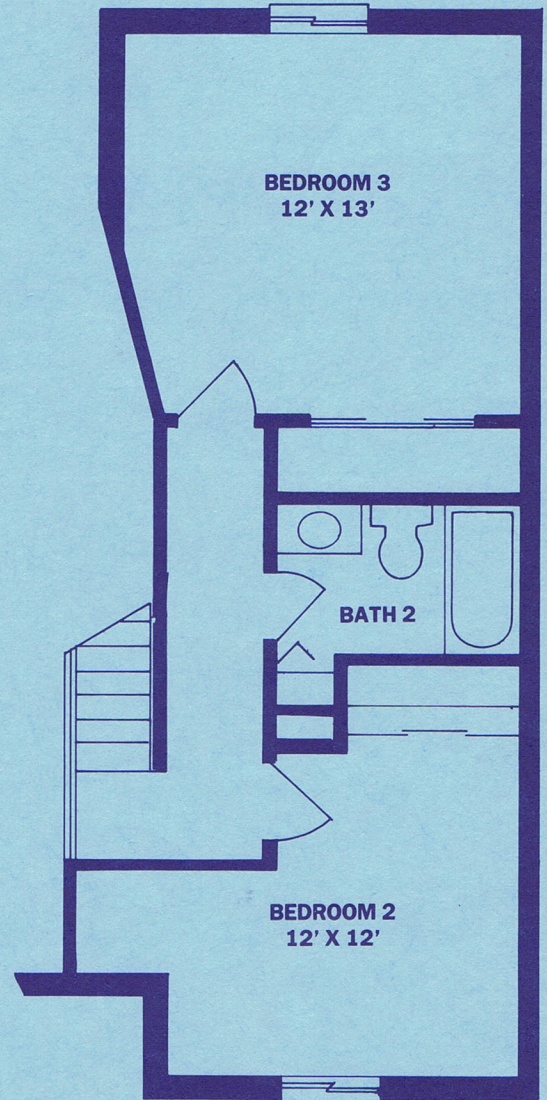
# FLOOR PLAN B

## The Estuary II OF MARCO

AIR CONDITIONED AREA 1,300 sq.ft.  
TOTAL LIVING SPACE 1,410 sq.ft.



FIRST FLOOR PLAN



LOFT FLOOR PLAN



# FLOOR PLAN C

## The Estuary II OF MARCO

AIR CONDITIONED AREA 1,100 sq.ft.  
TOTAL LIVING SPACE 1,230 sq.ft.

