

TWO BEDROOM – TWO & ONE THIRD BATHS

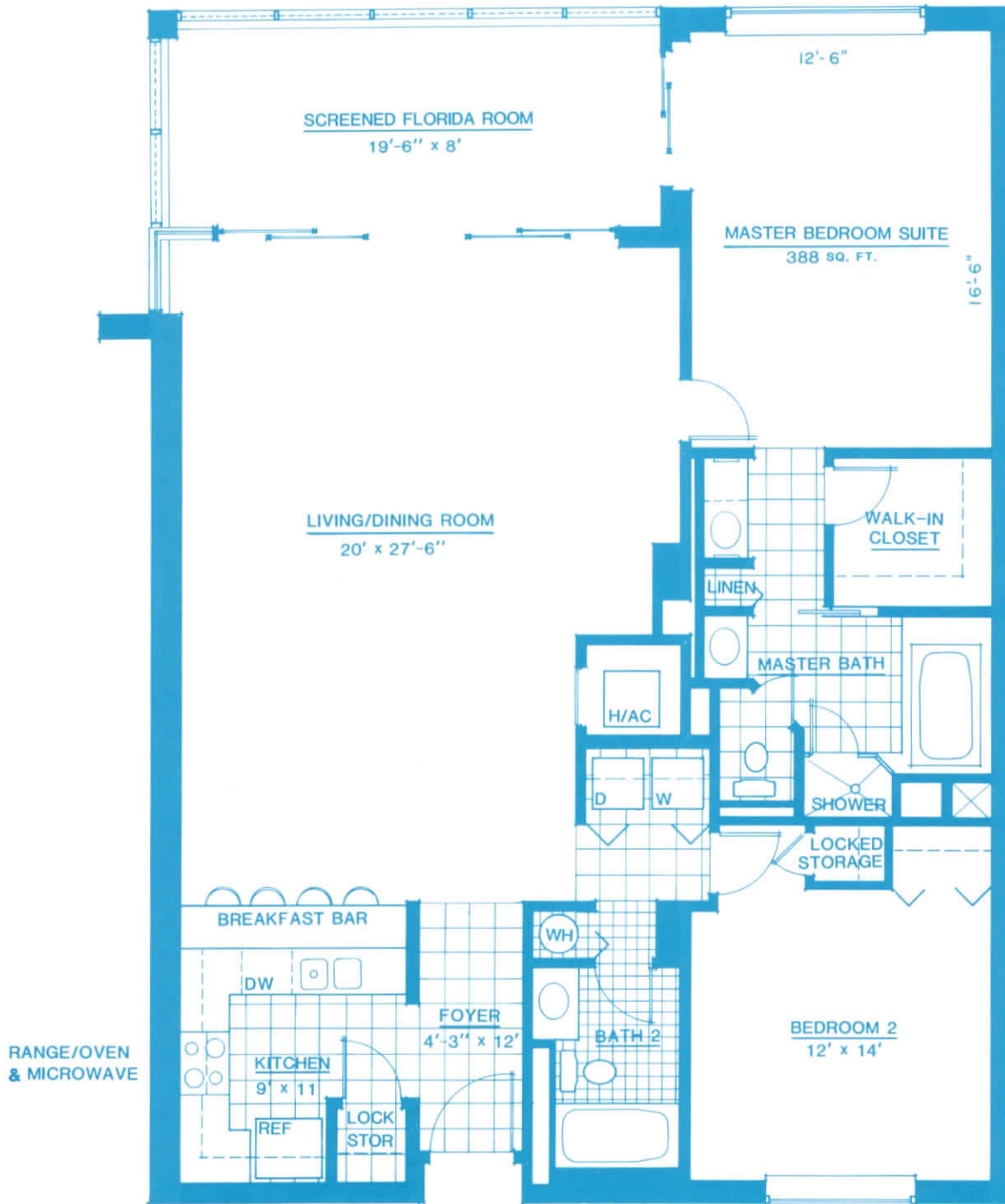
'A' FLOOR PLAN

TOTAL LIVING AREA: 1601 SQ. FT.

A/C AREA: 1445 SQ. FT.

DIMENSIONS & CALCULATIONS ARE APPROXIMATE





TWO BEDROOM – TWO & ONE THIRD BATHS
'A' FLOOR PLAN – CORNER UNIT

TOTAL LIVING AREA: 1601 SQ. FT.

A/C AREA: 1445 SQ.FT.

DIMENSIONS & CALCULATIONS ARE APPROXIMATE



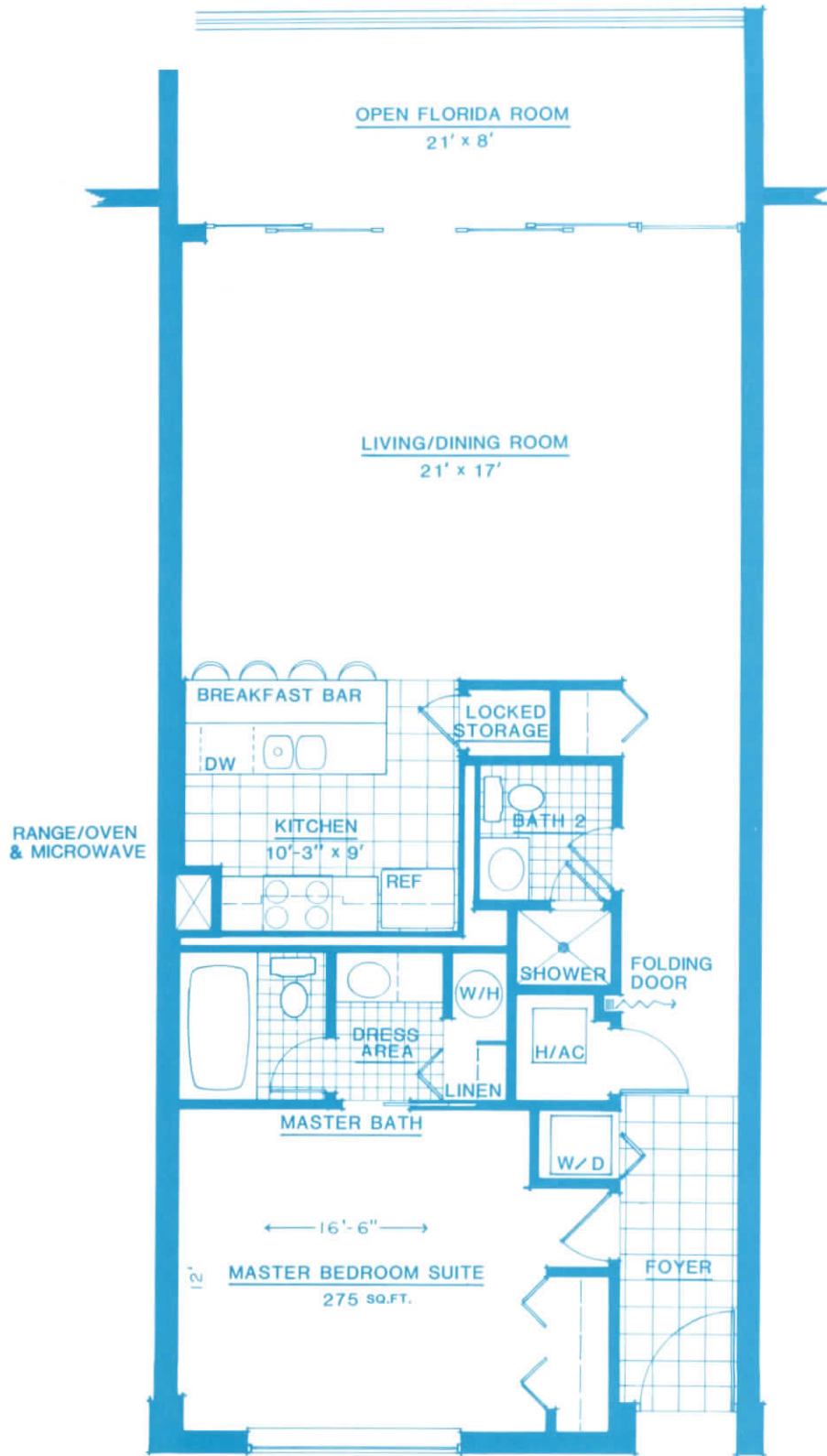


THREE BEDROOM (or DEN) – TWO & ONE THIRD BATHS
'B' FLOOR PLAN – CORNER UNIT

TOTAL LIVING AREA : 2269 SQ. FT.

A/C AREA : 1877 SQ. FT.

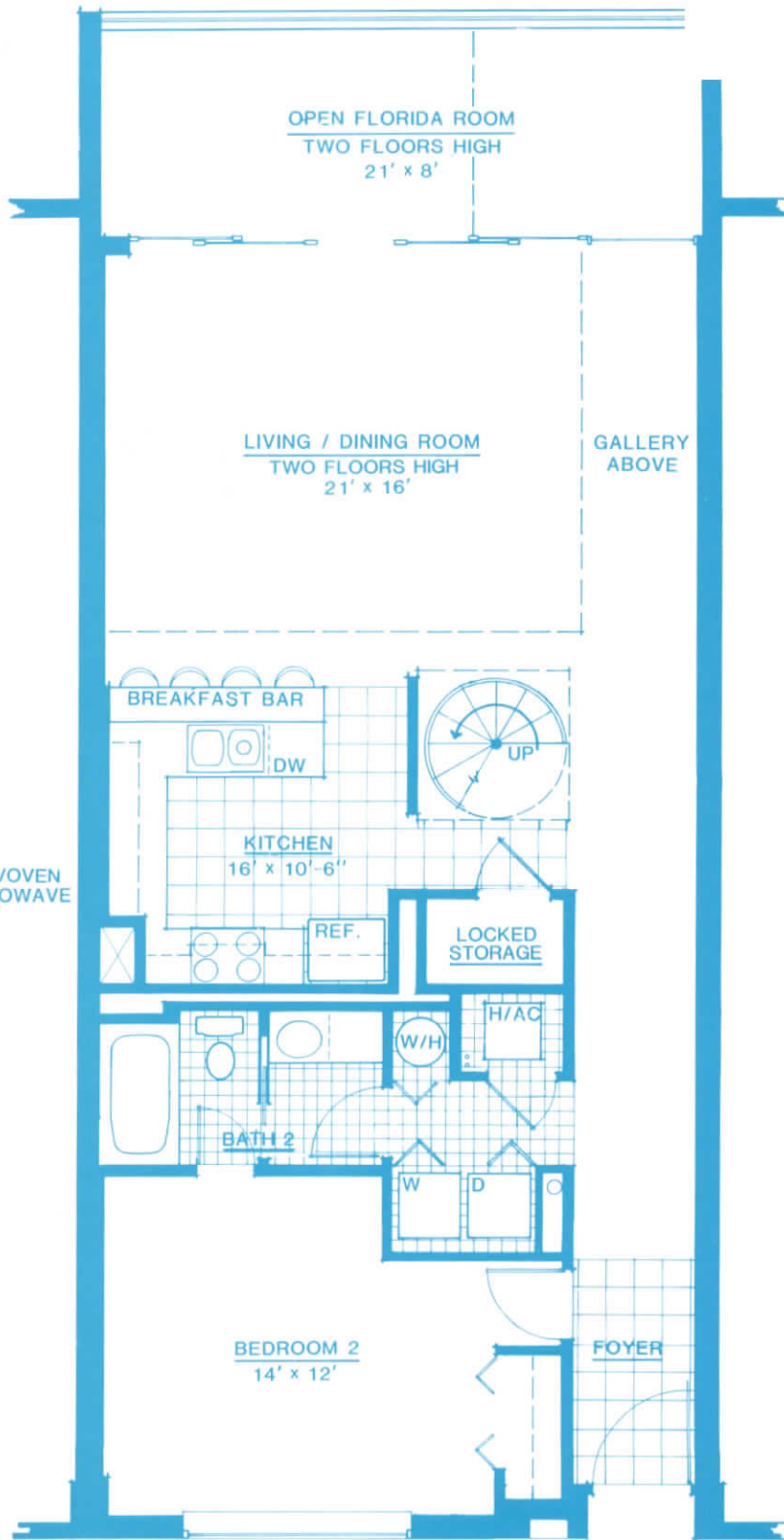
DIMENSIONS & CALCULATIONS ARE APPROXIMATE



ONE BEDROOM SUITE – TWO BATHS
'C' FLOOR PLAN

TOTAL LIVING AREA: 1188 SQ. FT.
A/C AREA : 1020 SQ. FT.
DIMENSIONS & CALCULATIONS ARE APPROXIMATE





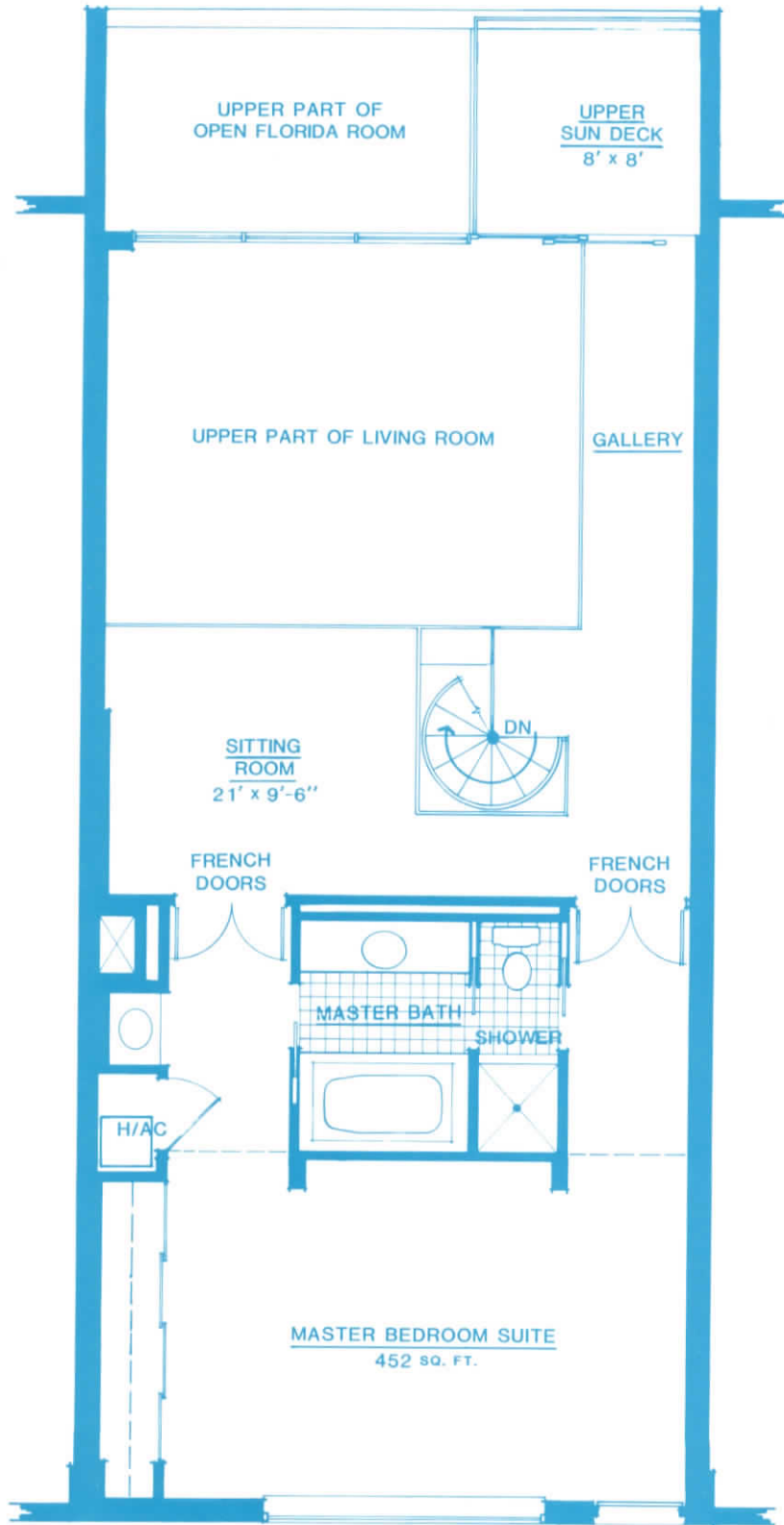
TWO LEVEL TOWNHOUSE – TWO & ONE THIRD BATHS
'D' FLOOR PLAN – FIRST FLOOR

TOTAL LIVING AREA: 2376 SQ. FT.

A/C AREA: 2040 SQ.FT.

DIMENSIONS & CALCULATIONS ARE APPROXIMATE



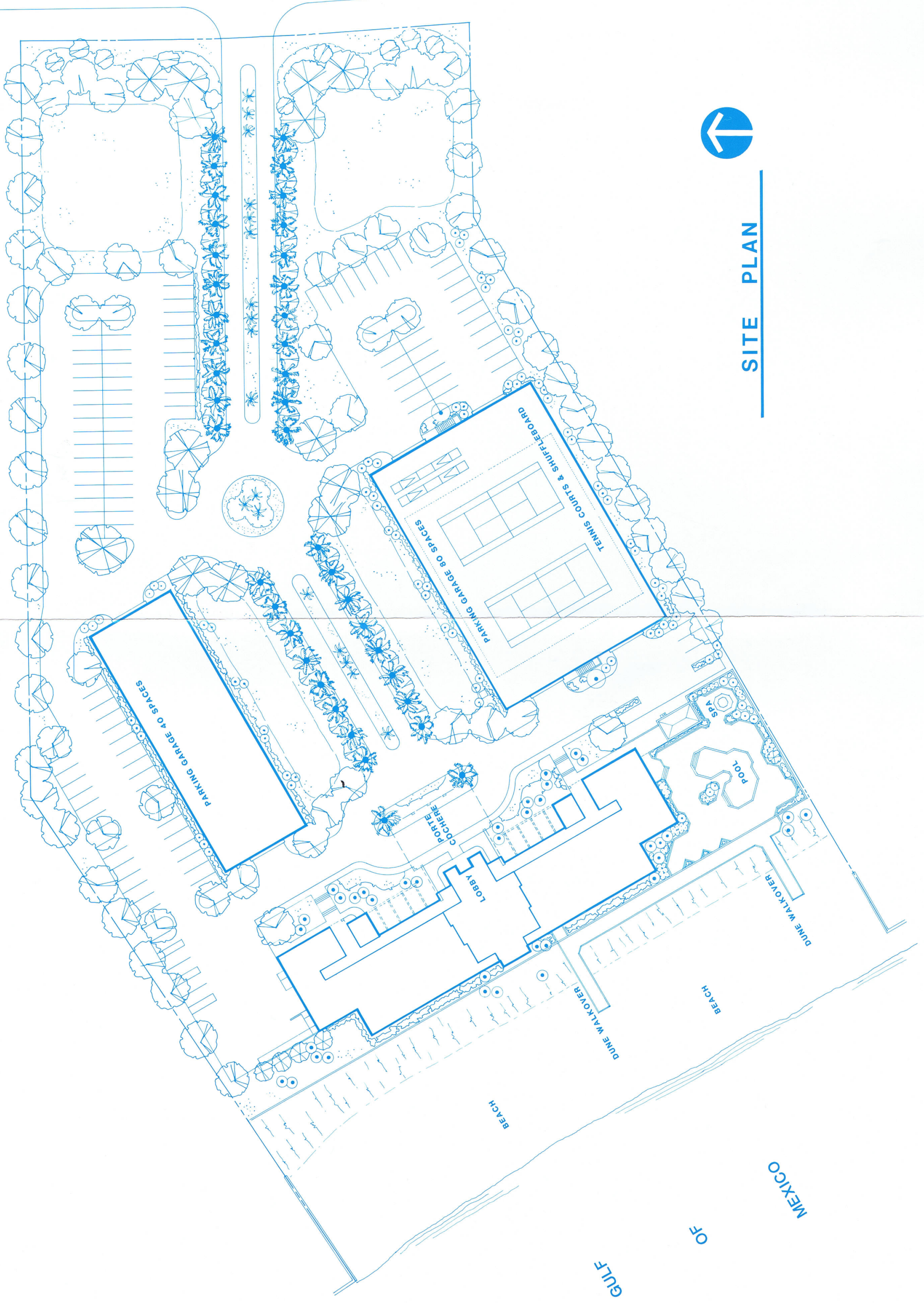


TWO LEVEL TOWNHOUSE
'D' FLOOR PLAN - SECOND FLOOR

DIMENSIONS & CALCULATIONS ARE APPROXIMATE



NORTH COLLIER BOULEVARD



SITE PLAN

