

GULF OF MEXICO

COZUMEL

FUTURE SITE OF COXCOZOL

BEACH

FUTURE SITE OF BELIZE

TAMPICO

MONTERREY

SHAW BRICK

CAXAMBRAS PASS

MERIDA

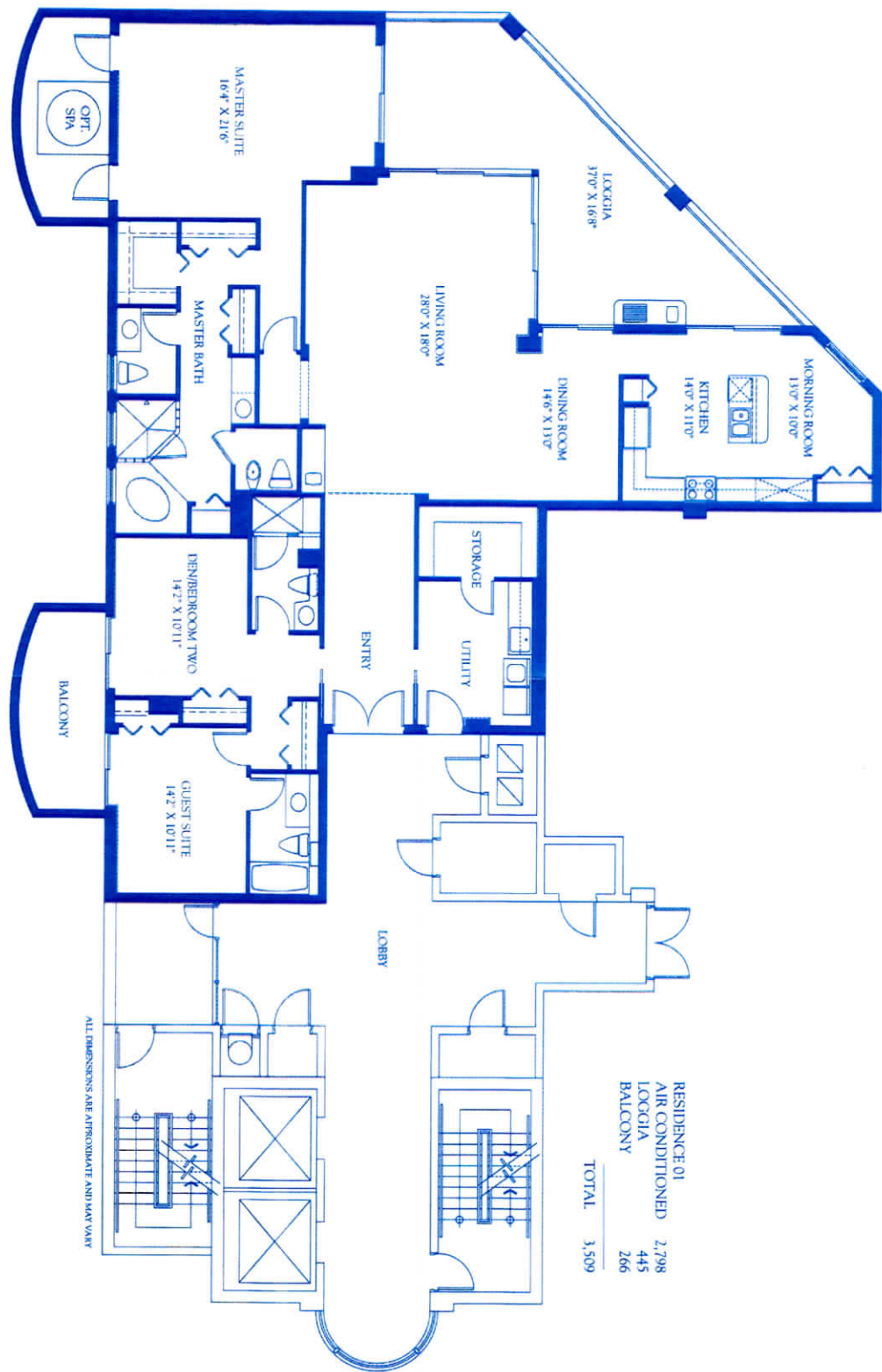


# CAPE MARCO

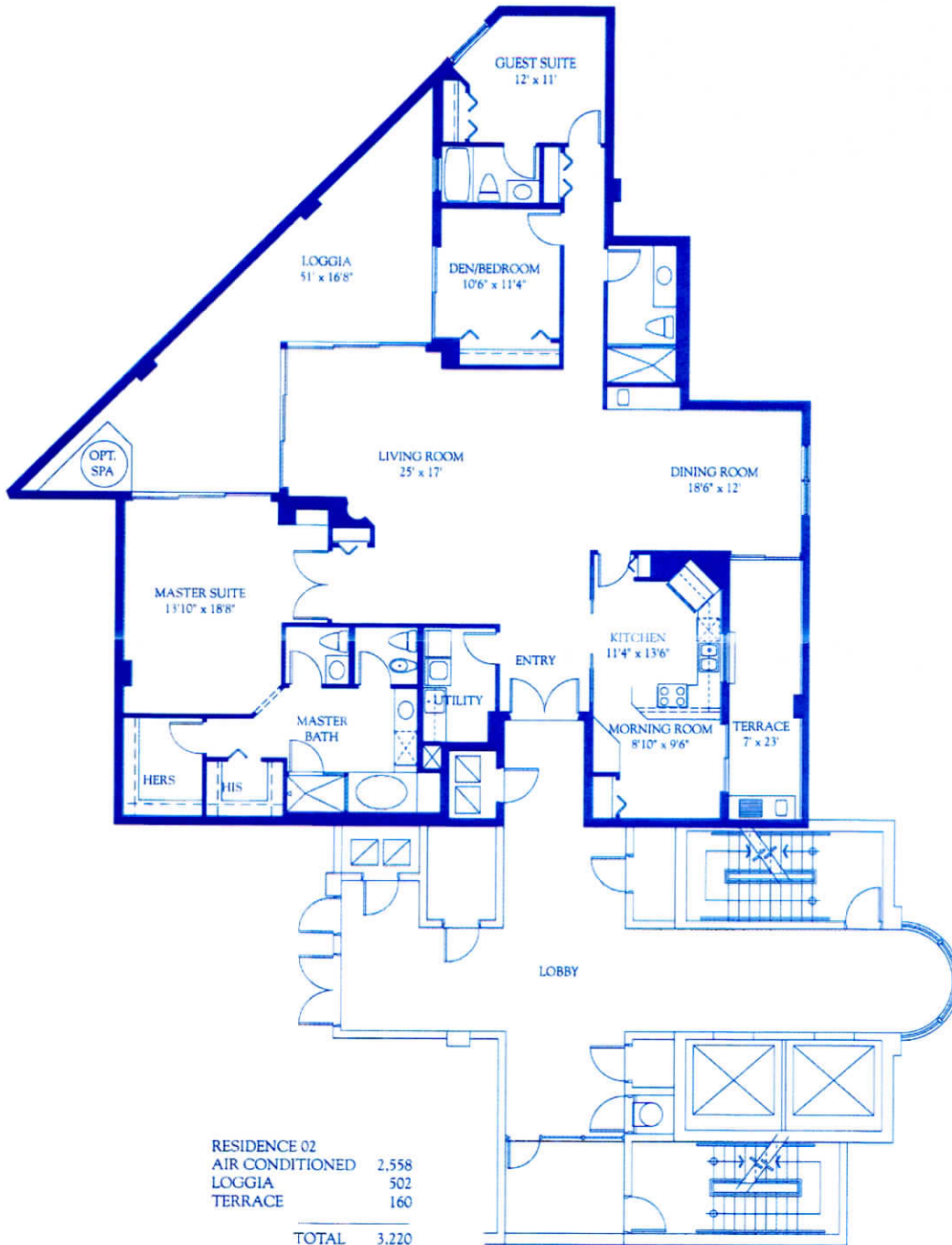
## SITE PLAN

Site plan is an artist's conception and not necessarily to scale. Plan may be modified by the developer without prior notice or obligations.

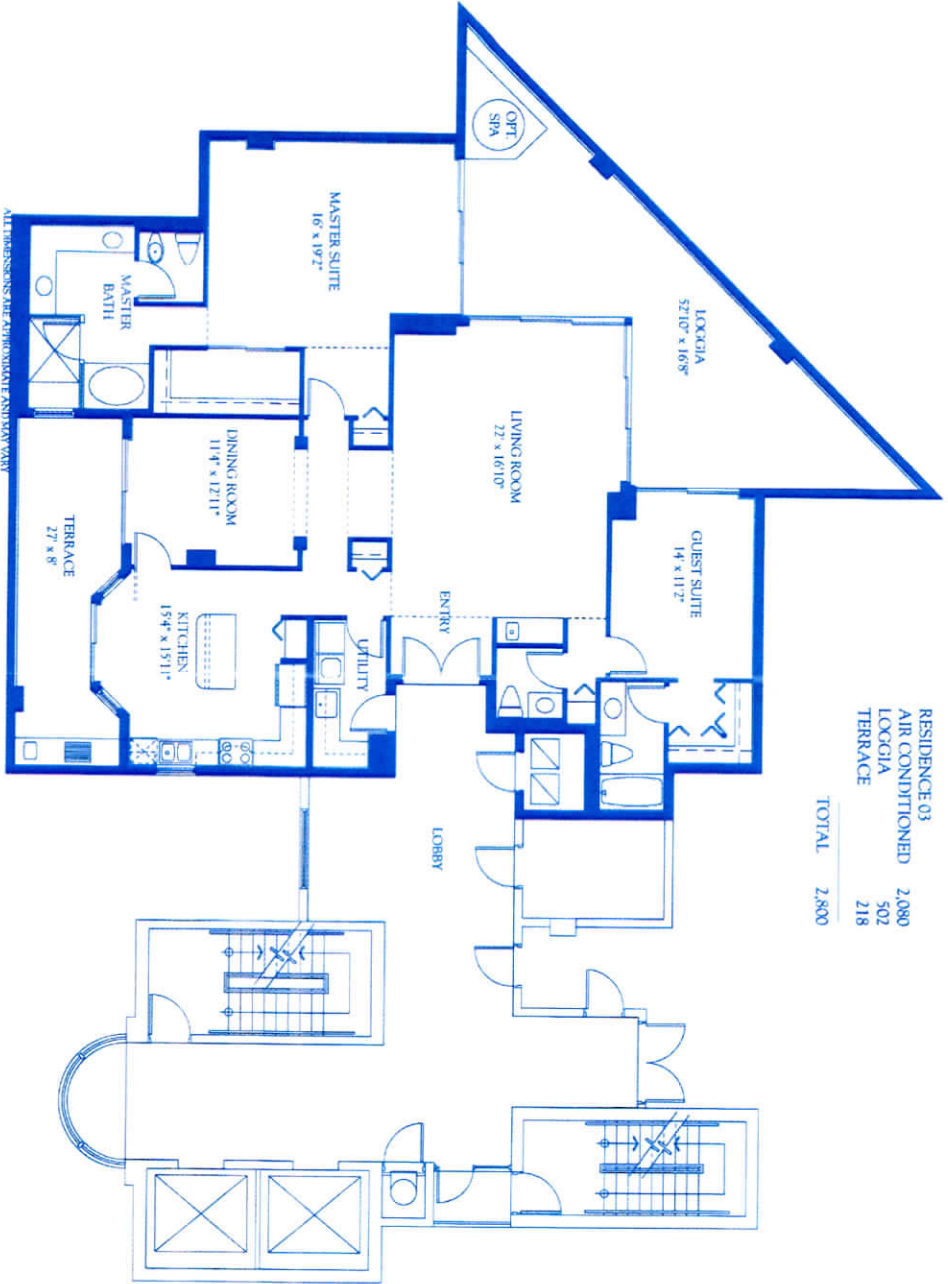




RESIDENCE 01	2,798
AIR CONDITIONED	445
LOCKIA	266
BALCONY	
<b>TOTAL</b>	<b>3,509</b>

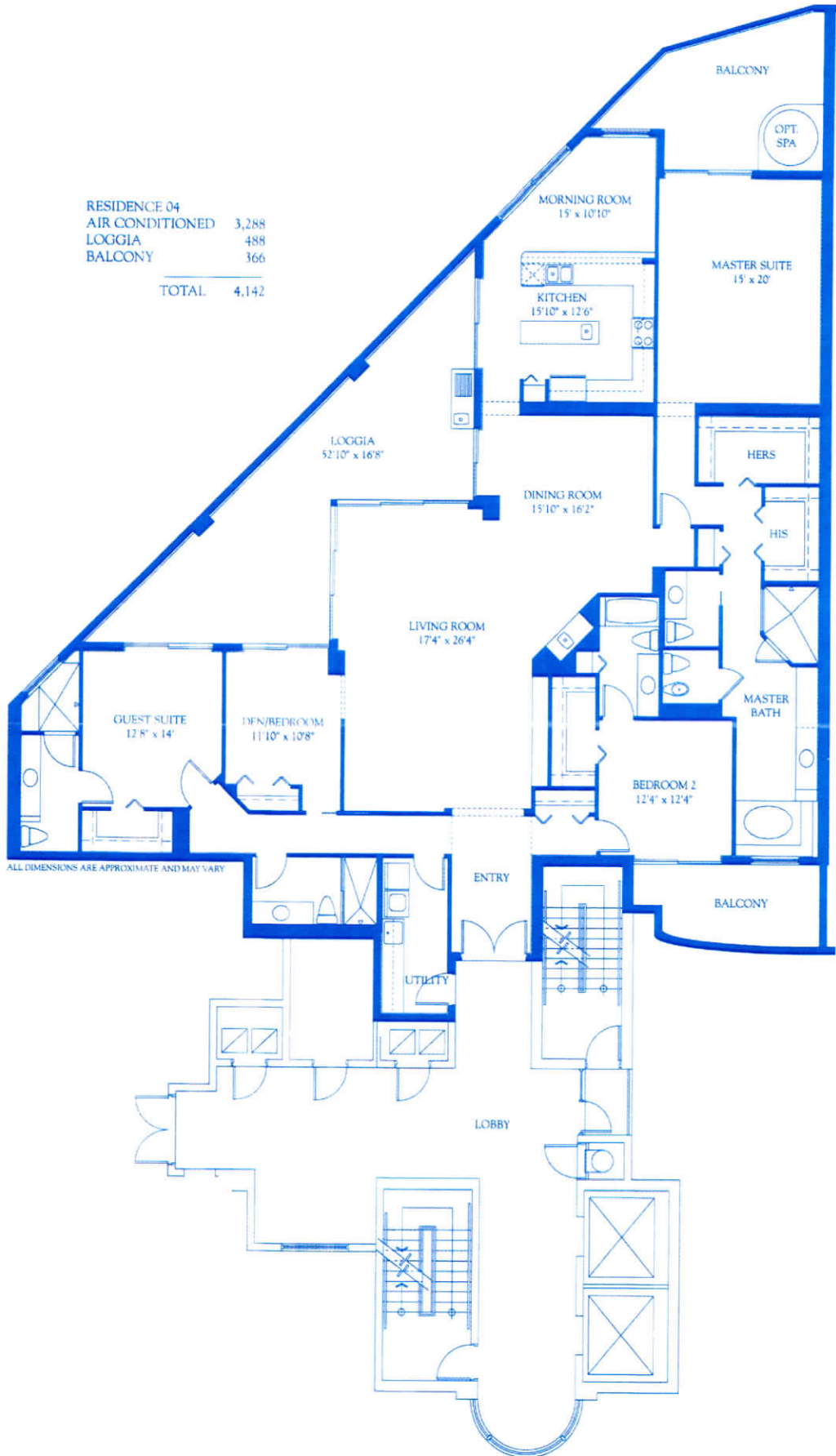


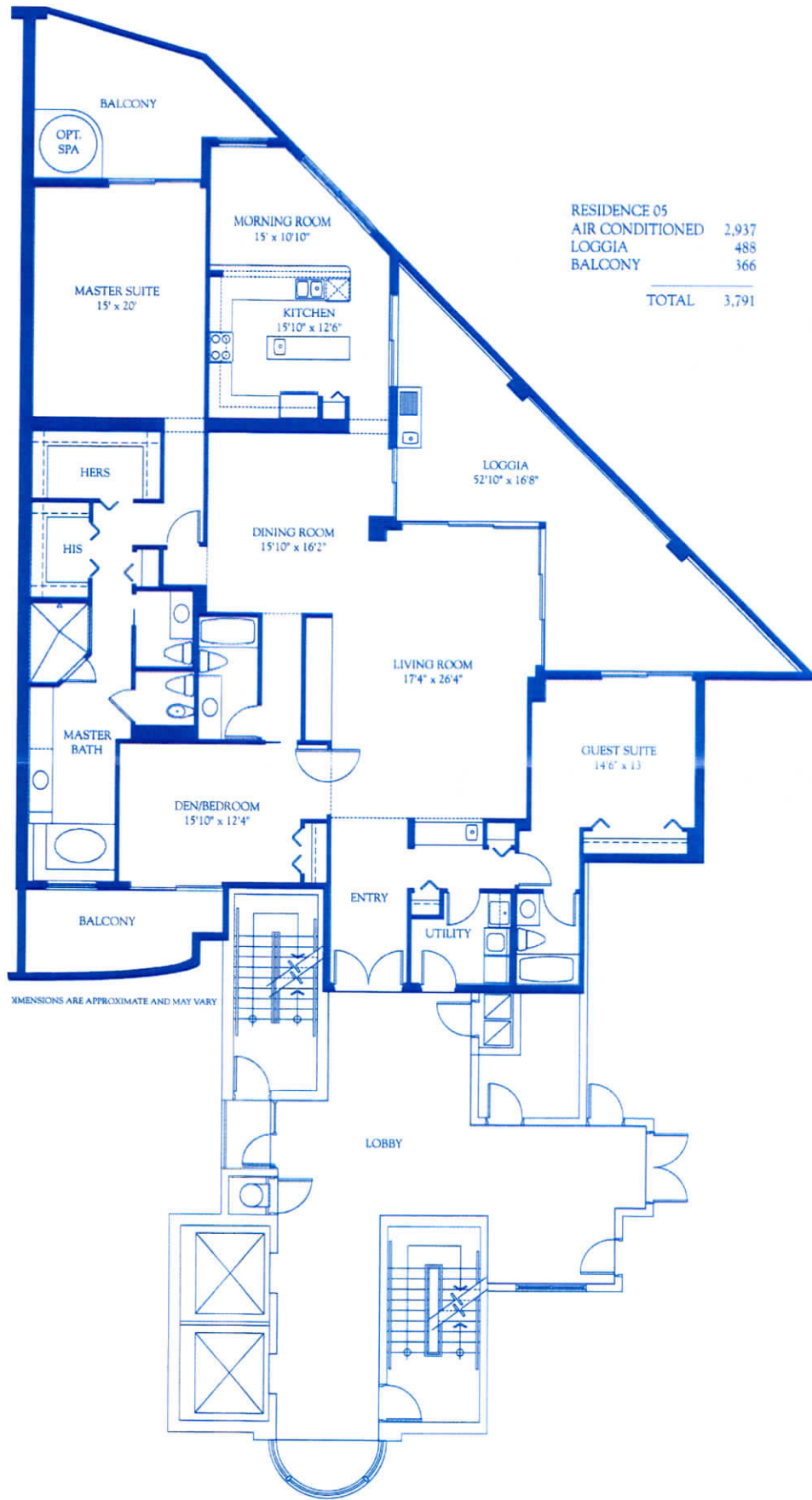
ALL DIMENSIONS ARE APPROXIMATE AND MAY VARY



RESIDENCE 03	
AIR CONDITIONED	2,080
LOGGIA	502
TERRACE	218
<b>TOTAL</b>	<b>2,800</b>

RESIDENCE 04	
AIR CONDITIONED	3,288
LOGGIA	488
BALCONY	366
TOTAL	4,142





RESIDENCE 05	
AIR CONDITIONED	2,937
LOGGIA	488
BALCONY	366
<b>TOTAL</b>	<b>3,791</b>

DIMENSIONS ARE APPROXIMATE AND MAY VARY

