

Belize Site Plan

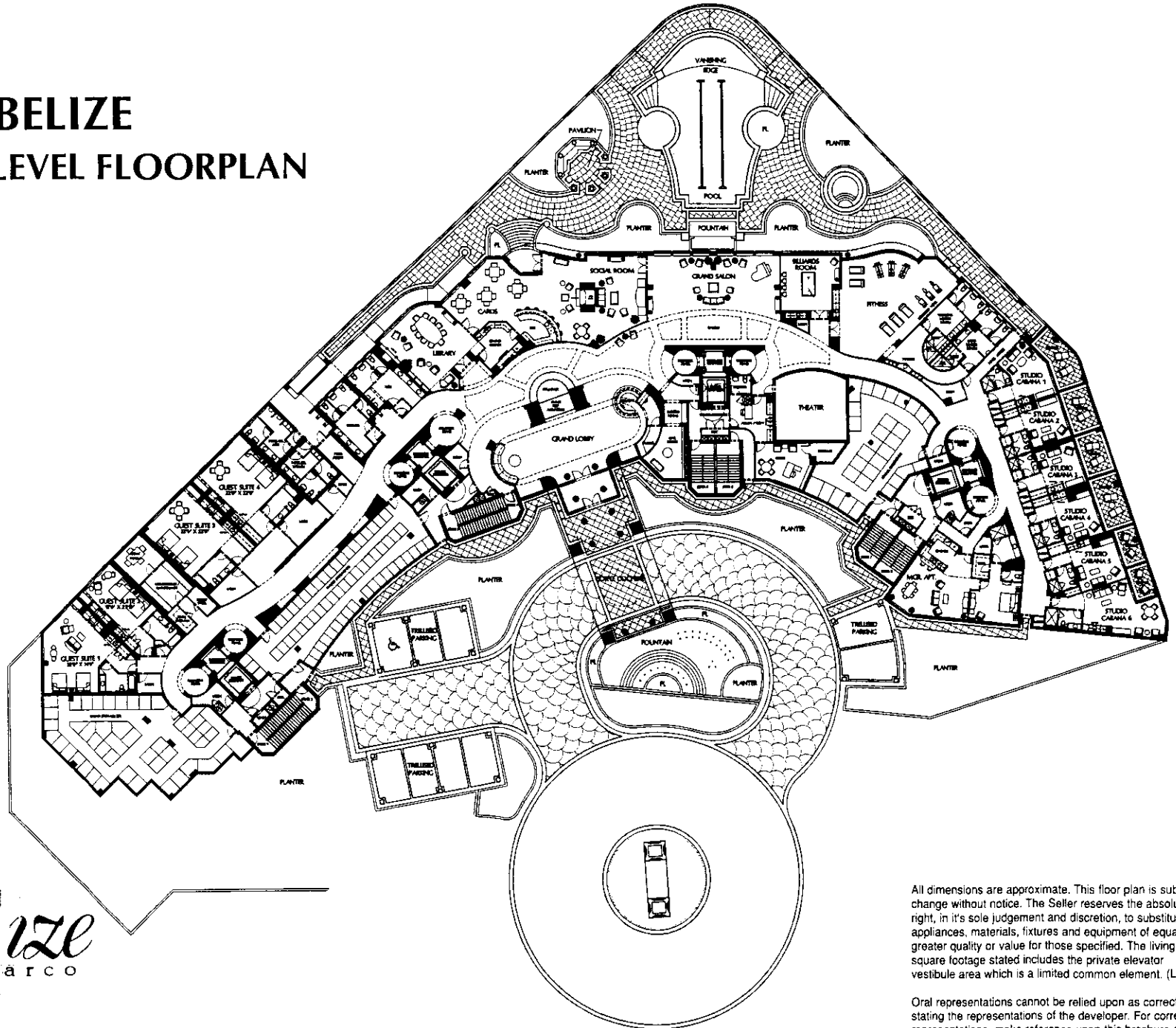


Belize
Cape Marco

This concept sketch merely indicates Developer's current proposal for development, and is not to be relied upon and is subject to change without notice.

BELIZE

AMENITY LEVEL FLOORPLAN



Belize
Cape Marco

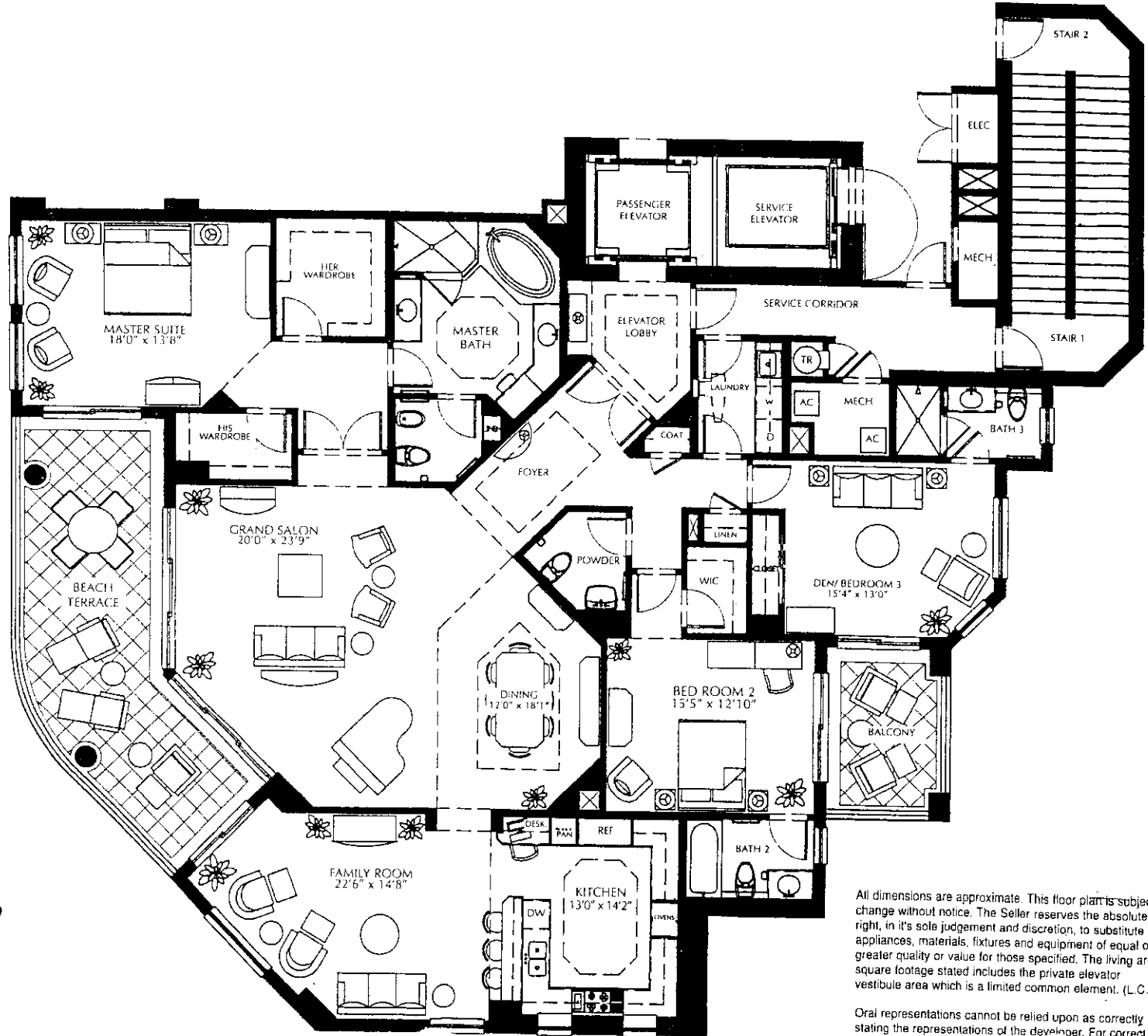
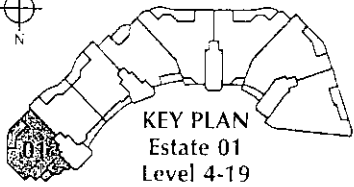
All dimensions are approximate. This floor plan is subject to change without notice. The Seller reserves the absolute right, in its sole judgement and discretion, to substitute appliances, materials, fixtures and equipment of equal or greater quality or value for those specified. The living area square footage stated includes the private elevator vestibule area which is a limited common element. (L.C.E.)

Oral representations cannot be relied upon as correctly stating the representations of the developer. For correct representations, make reference upon this brochure and to the documents required by section 718.503 Florida Statutes, to be furnished by the developer to a buyer.

BELIZE

01 Estate

2 Bedroom, 3 1/2 Bath,
Den, Family Room
Enclosed Area 3,029 Sq.Ft.
Total Residence 3,503 Sq.Ft.



Belize
Cape Marco

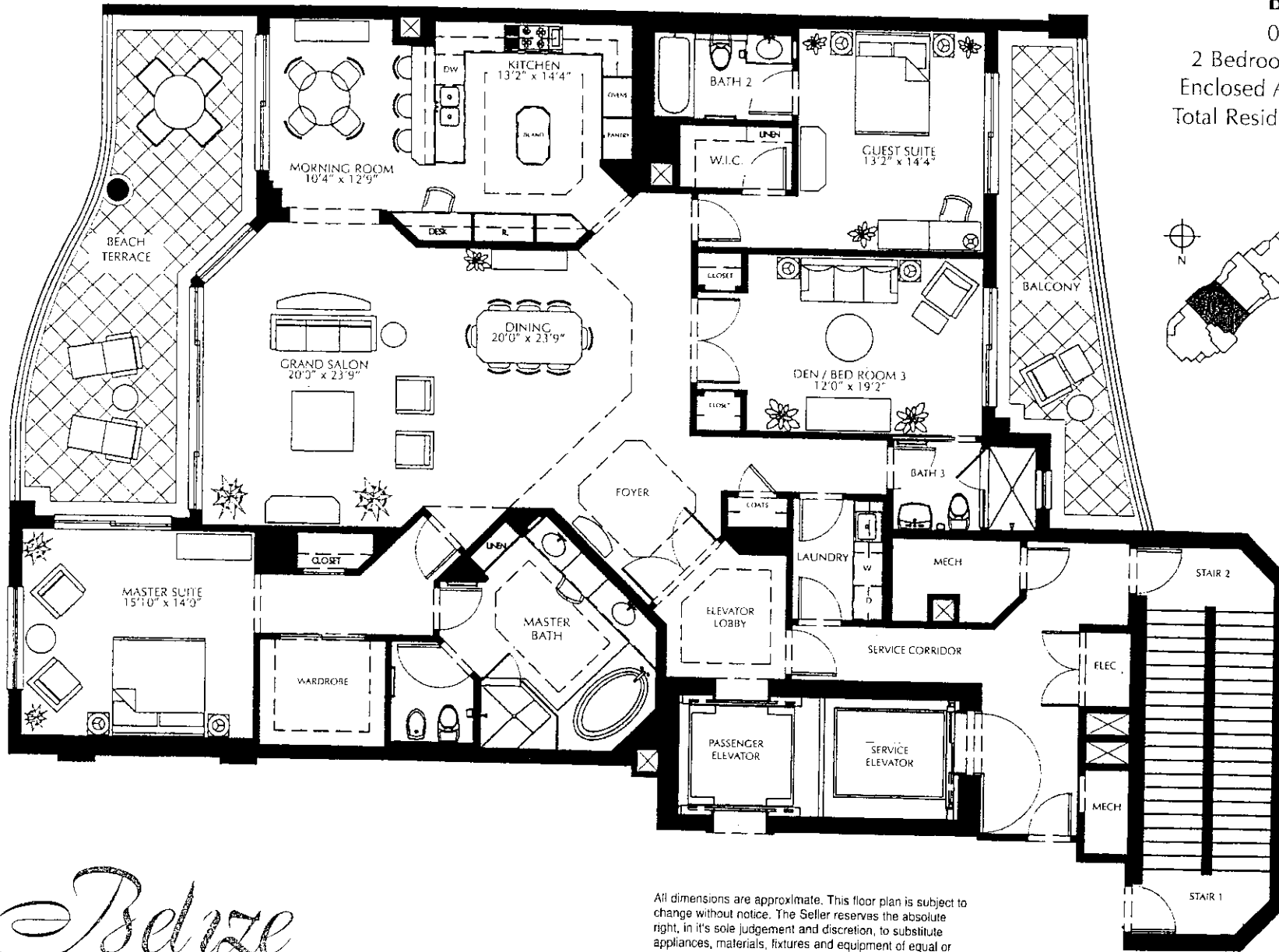
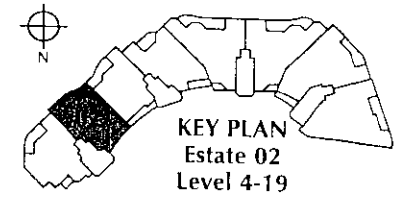
All dimensions are approximate. This floor plan is subject to change without notice. The Seller reserves the absolute right, in its sole judgement and discretion, to substitute appliances, materials, fixtures and equipment of equal or greater quality or value for those specified. The living area square footage stated includes the private elevator vestibule area which is a limited common element. (L.C.E.)

Oral representations cannot be relied upon as correctly stating the representations of the developer. For correct representations, make reference to the brochure and to the documents required by section 617.01, Florida Statutes, to be furnished by the developer to a buyer.

BELIZE

02 Estate

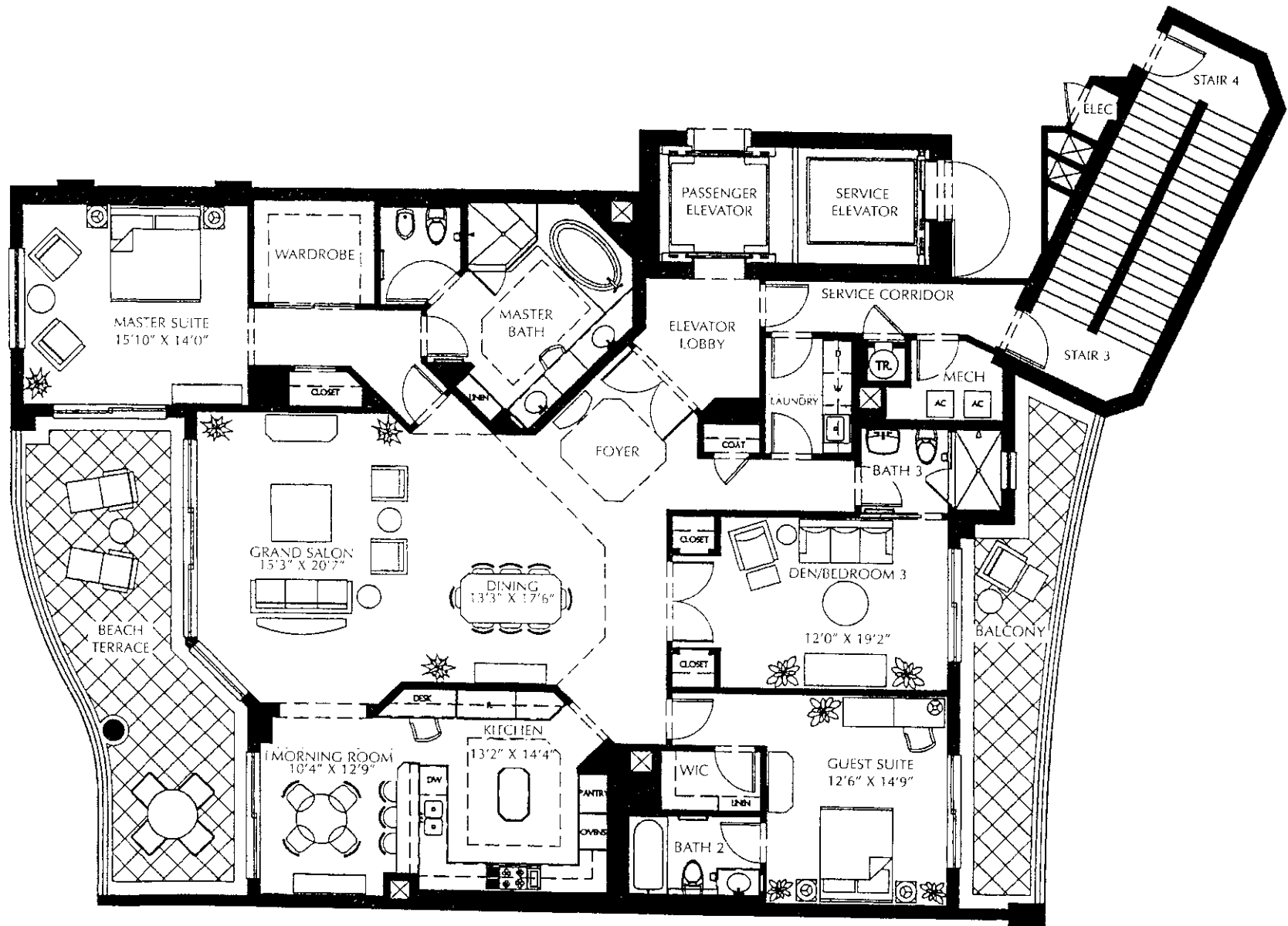
2 Bedroom, 3 Bath, Den
Enclosed Area 2,680 Sq.Ft.
Total Residence 3,326 Sq.Ft.



Belize
Cape Marco

All dimensions are approximate. This floor plan is subject to change without notice. The Seller reserves the absolute right, in its sole judgement and discretion, to substitute appliances, materials, fixtures and equipment of equal or greater quality or value for those specified. The living area square footage stated includes the private elevator vestibule area which is a limited common element. (L.C.E.)

Oral representations cannot be relied upon as correctly stating the representations of the developer. For correct representations, make reference upon this brochure and to the documents required by section 718.503, Florida Statutes, to be furnished by the developer to a buyer.

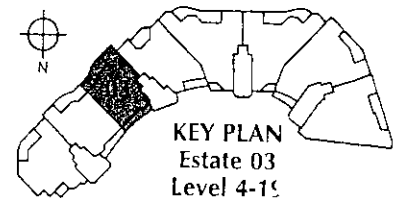


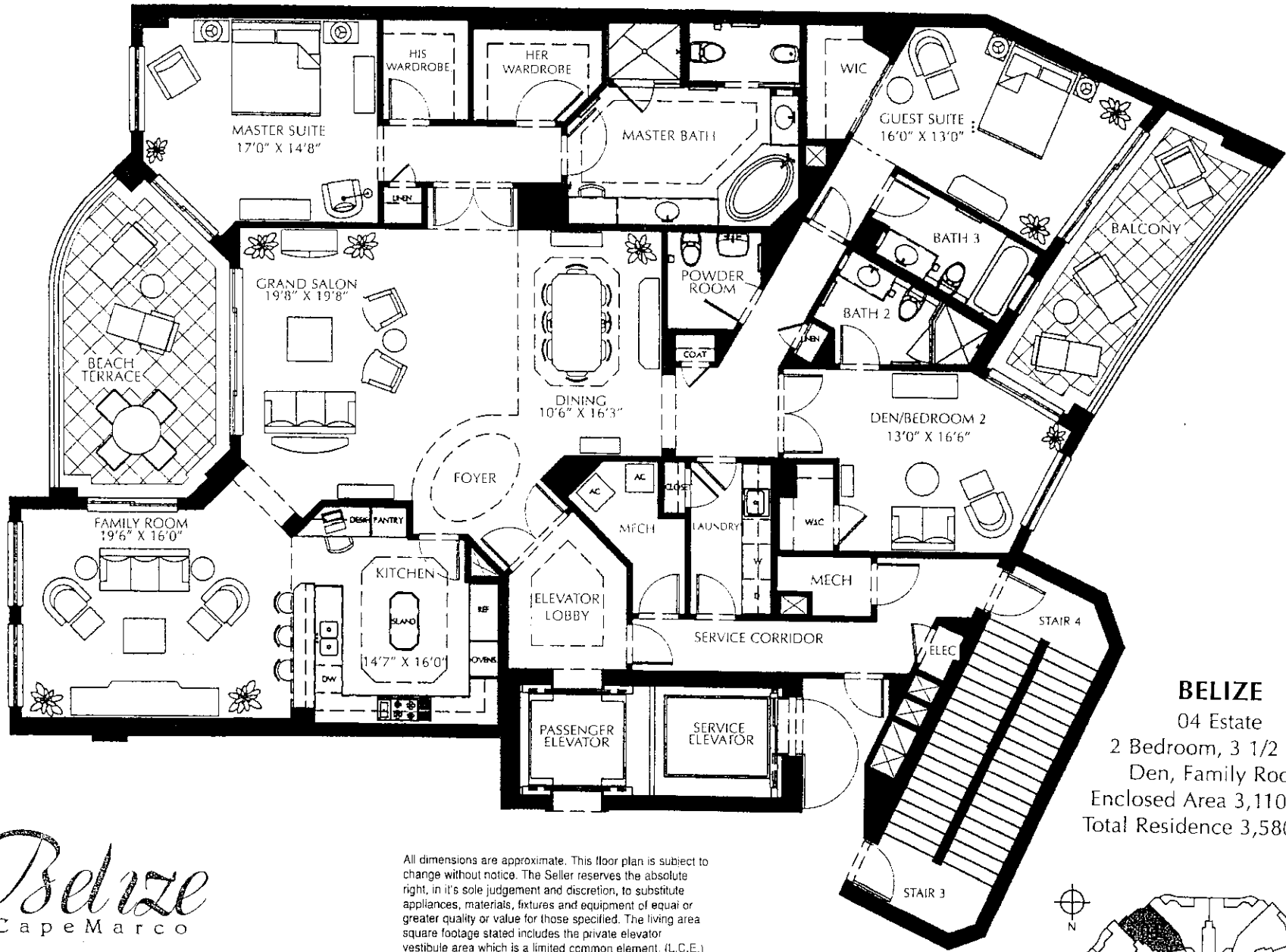
Belize
Cape Marco

All dimensions are approximate. This floor plan is subject to change without notice. The Seller reserves the absolute right, in its sole judgement and discretion, to substitute appliances, materials, fixtures and equipment of equal or greater quality or value for those specified. The living area square footage stated includes the private elevator vestibule area which is a limited common element. (L.C.E.)

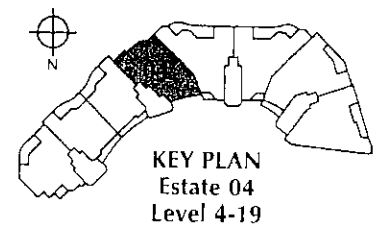
Oral representations cannot be relied upon as correctly stating the representations of the developer. For correct representations, make reference upon this brochure and to the documents required by section 718.503, Florida Statutes, to be furnished by the developer to a buyer.

BELIZE
03 Estate
2 Bedroom, Den, 3 Bath
Enclosed Area 2,680 Sq.Ft.
Total Residence 3,326 Sq.Ft.





BELIZE
 04 Estate
 2 Bedroom, 3 1/2 Bath
 Den, Family Room
 Enclosed Area 3,110 Sq.Ft.
 Total Residence 3,580 Sq.Ft.



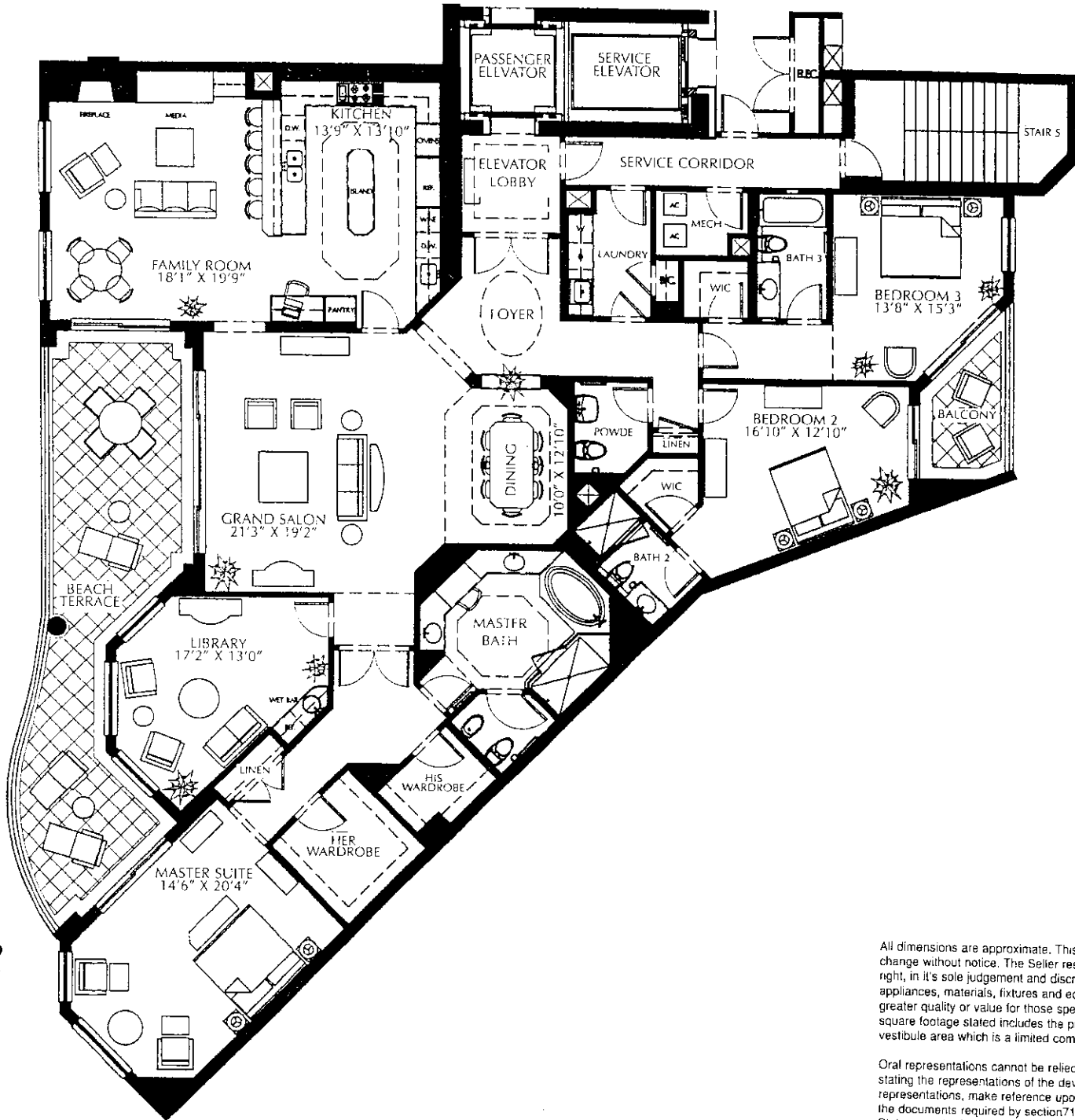
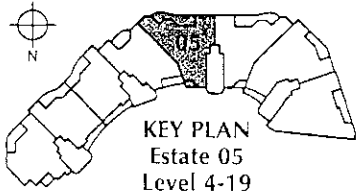
Belize
 Cape Marco

All dimensions are approximate. This floor plan is subject to change without notice. The Seller reserves the absolute right, in its sole judgement and discretion, to substitute appliances, materials, fixtures and equipment of equal or greater quality or value for those specified. The living area square footage stated includes the private elevator vestibule area which is a limited common element. (L.C.E.)

Oral representations cannot be relied upon as correctly stating the representations of the developer. For correct representations, make reference upon this brochure and to the documents required by section 718.503 Florida Statutes, to be furnished by the developer to a buyer.

BELIZE

05 Estate
 3 Bedroom, 3 1/2 Bath
 Library, Family Room
 Enclosed Area 3,600 Sq.Ft.
 Total Residence 4,200 Sq.Ft.



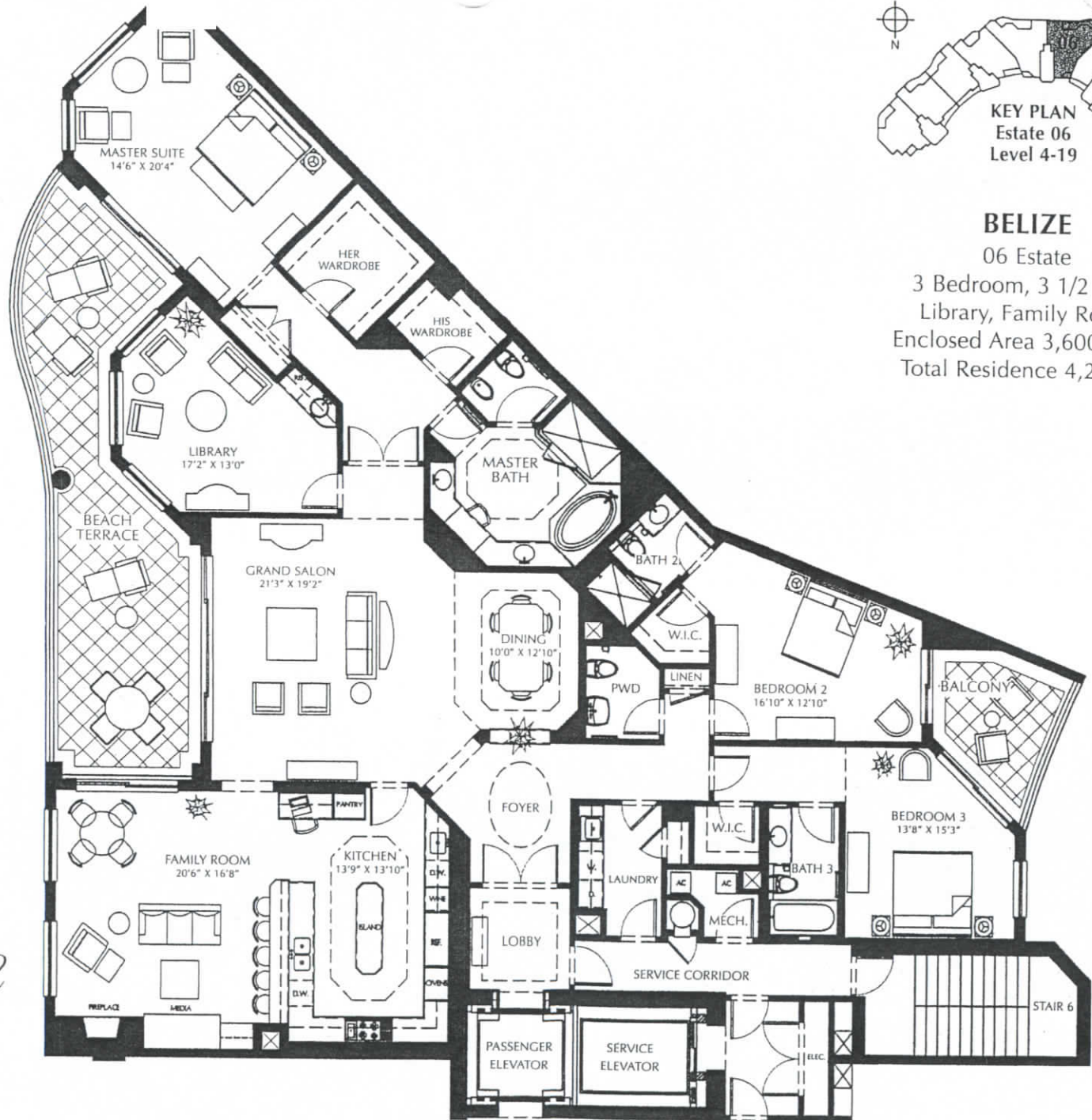
Belize
 Cape Marco

All dimensions are approximate. This floor plan is subject to change without notice. The Seller reserves the absolute right, in its sole judgement and discretion, to substitute appliances, materials, fixtures and equipment of equal or greater quality or value for those specified. The living area square footage stated includes the private elevator vestibule area which is a limited common element. (L.C.E.)

Oral representations cannot be relied upon as correctly stating the representations of the developer. For correct representations, make reference upon purchase and to the documents required by section 711 of the Florida Statutes, to be furnished by the developer to a buyer.

All dimensions are approximate. This floor plan is subject to change without notice. The developer reserves the absolute right, in its sole judgment and discretion, to substitute appliances, materials, fixtures and equipment of equal or greater quality or value for those specified. The living area square footage stated includes the private elevator vestibule area which is a limited common element. (L.C.E.)

Oral representations cannot be relied upon as correctly stating the representations of the developer. For correct representations, make reference upon this brochure and to the documents required by section 718.503, Florida Statutes, to be furnished by the developer to a buyer.



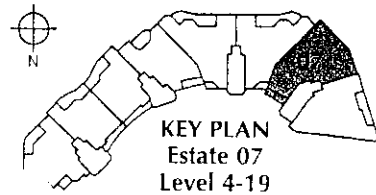
BELIZE
06 Estate
3 Bedroom, 3 1/2 Bath
Library, Family Room
Enclosed Area 3,600 ACSF
Total Residence 4,200 SF

Belize
Cape Marco



Belize
Cape Marco

BELIZE
07 Estate
3 Bedroom, 3 1/2 Bath
Library, Family Room
Enclosed Area 3,844 Sq.Ft.
Total Residence 4,347 Sq.Ft.

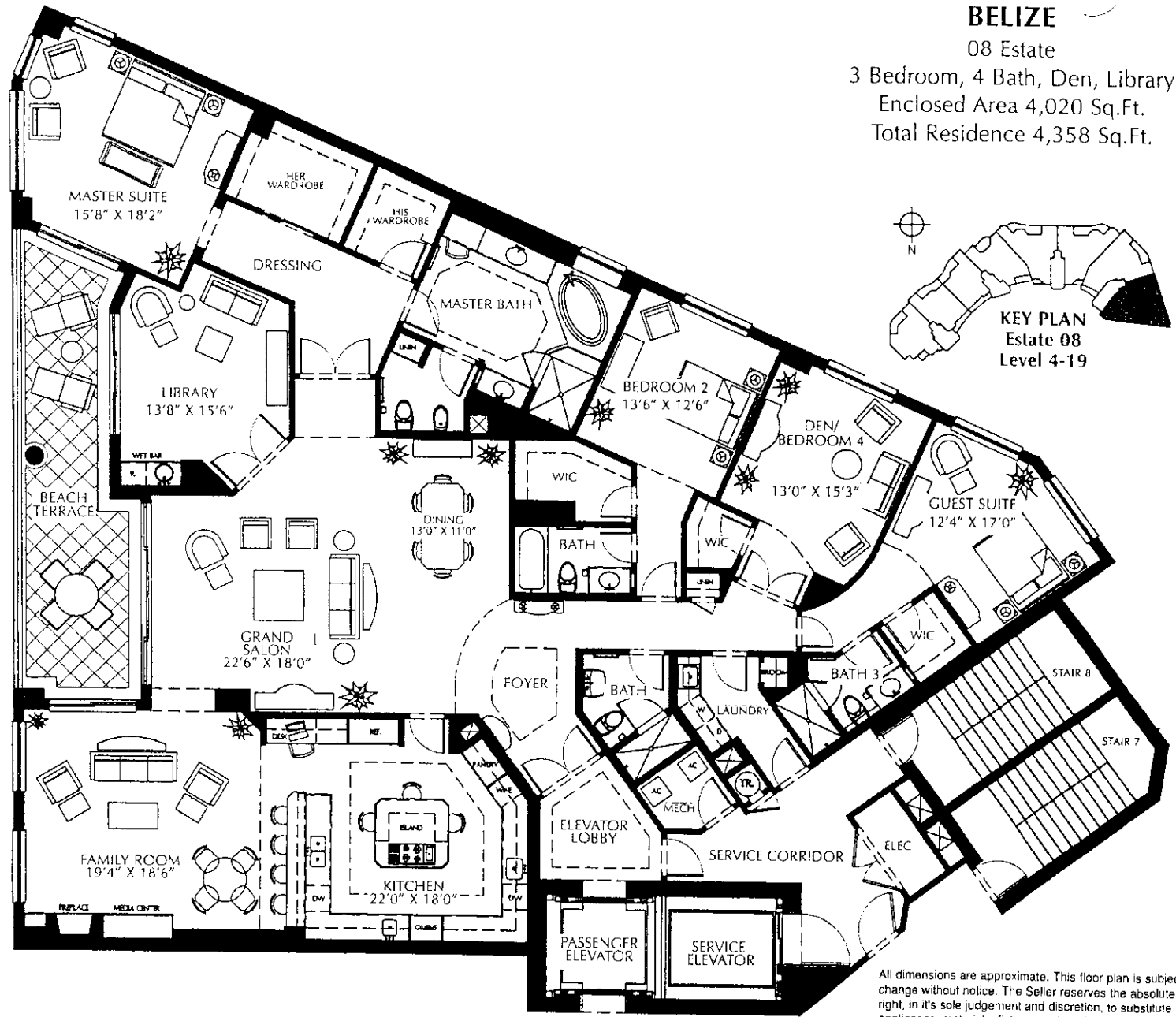


All dimensions are approximate. This floor plan is subject to change without notice. The Seller reserves the absolute right, in its sole judgement and discretion, to substitute appliances, materials, fixtures and equipment of equal or greater quality or value for those specified. The living area square footage stated includes the private elevator vestibule area which is a limited common element. (L.C.E.)

Oral representations cannot be relied upon as correctly stating the representations of the developer. For correct representations, make reference upon this purchase and to the documents required by section 718.5 Statutes, to be furnished by the developer.

BELIZE

08 Estate
3 Bedroom, 4 Bath, Den, Library
Enclosed Area 4,020 Sq.Ft.
Total Residence 4,358 Sq.Ft.



All dimensions are approximate. This floor plan is subject to change without notice. The Seller reserves the absolute right, in its sole judgement and discretion, to substitute appliances, materials, fixtures and equipment of equal or greater quality or value for those specified. The living area square footage stated includes the private elevator vestibule area which is a limited common element. (L.C.E.)

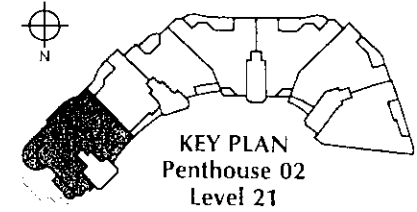
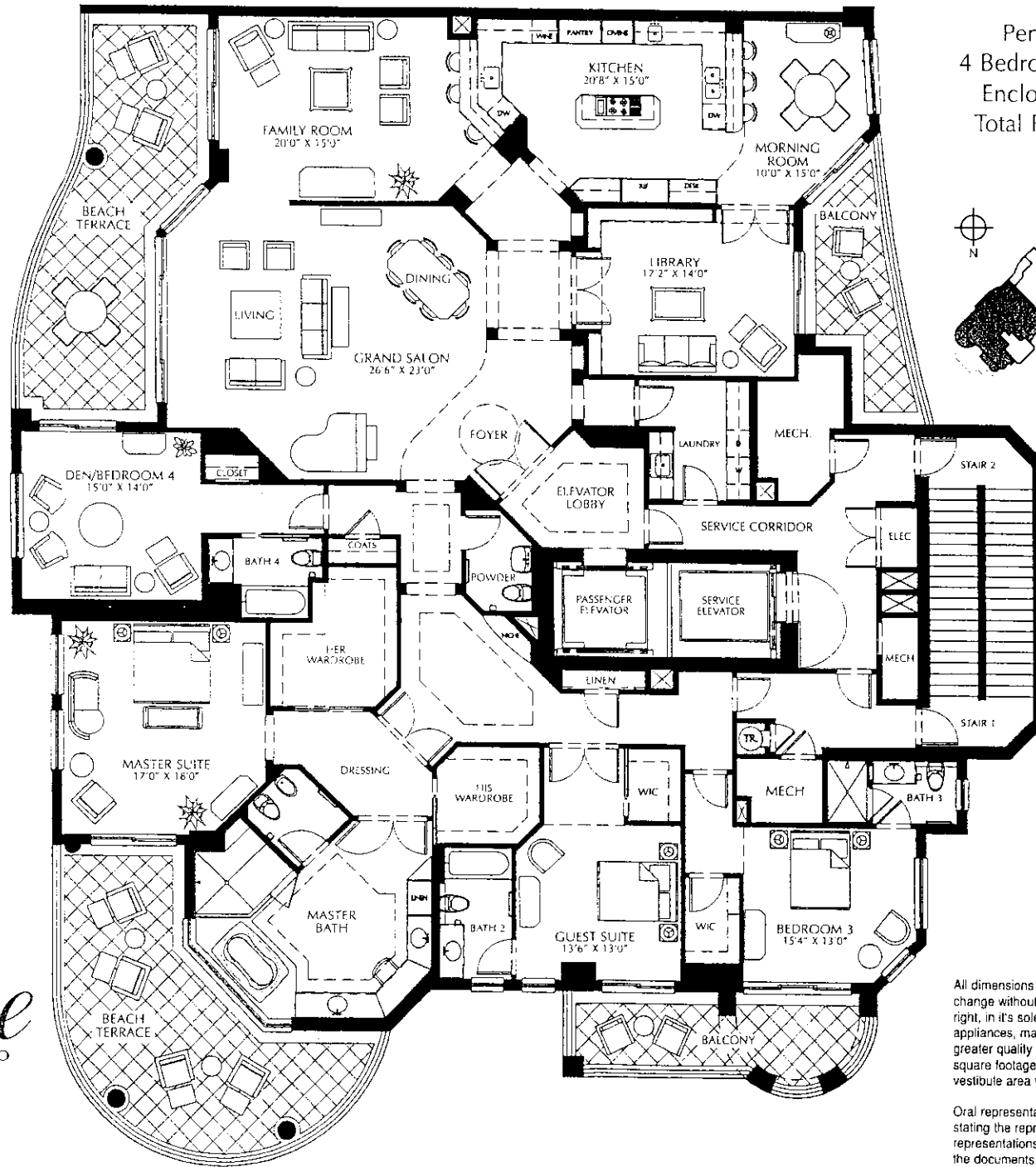
Oral representations cannot be relied upon as correctly stating the representations of the developer. For correct representations, make reference upon this brochure and to the documents required by section 718.503, Florida Statutes, to be furnished by the developer to a buyer.

Belize
Cape Marco

597-1577
394-4888
NAPLES MARCO BONITA
011-498-1100

BELIZE

Penthouse 02 Level 21
4 Bedroom, 4 1/2 Bath, Library
Enclosed Area 4,765 Sq.Ft.
Total Residence 5,910 Sq.Ft.



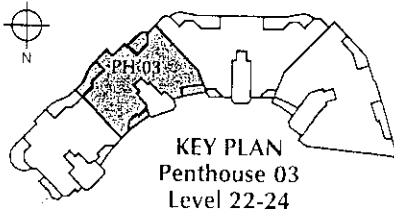
Belize
Cape Marco

All dimensions are approximate. This floor plan is subject to change without notice. The Seller reserves the absolute right, in its sole judgement and discretion, to substitute appliances, materials, fixtures and equipment of equal or greater quality or value for those specified. The living area square footage stated includes the private elevator vestibule area which is a limited common element. (L.C.E.)

Oral representations cannot be relied upon as correctly stating the representations of the developer. For correct representations, make reference upon this brochure and to the documents required by section 718.503, Florida Statutes, to be furnished by the developer to a buyer.

BELIZE

Penthouse 03
 4 Bedroom, 4 1/2 Bath, Study,
 Library, Family Room
 Enclosed Area 5,873 Sq.Ft.
 Total Residence 6,881 Sq.Ft.



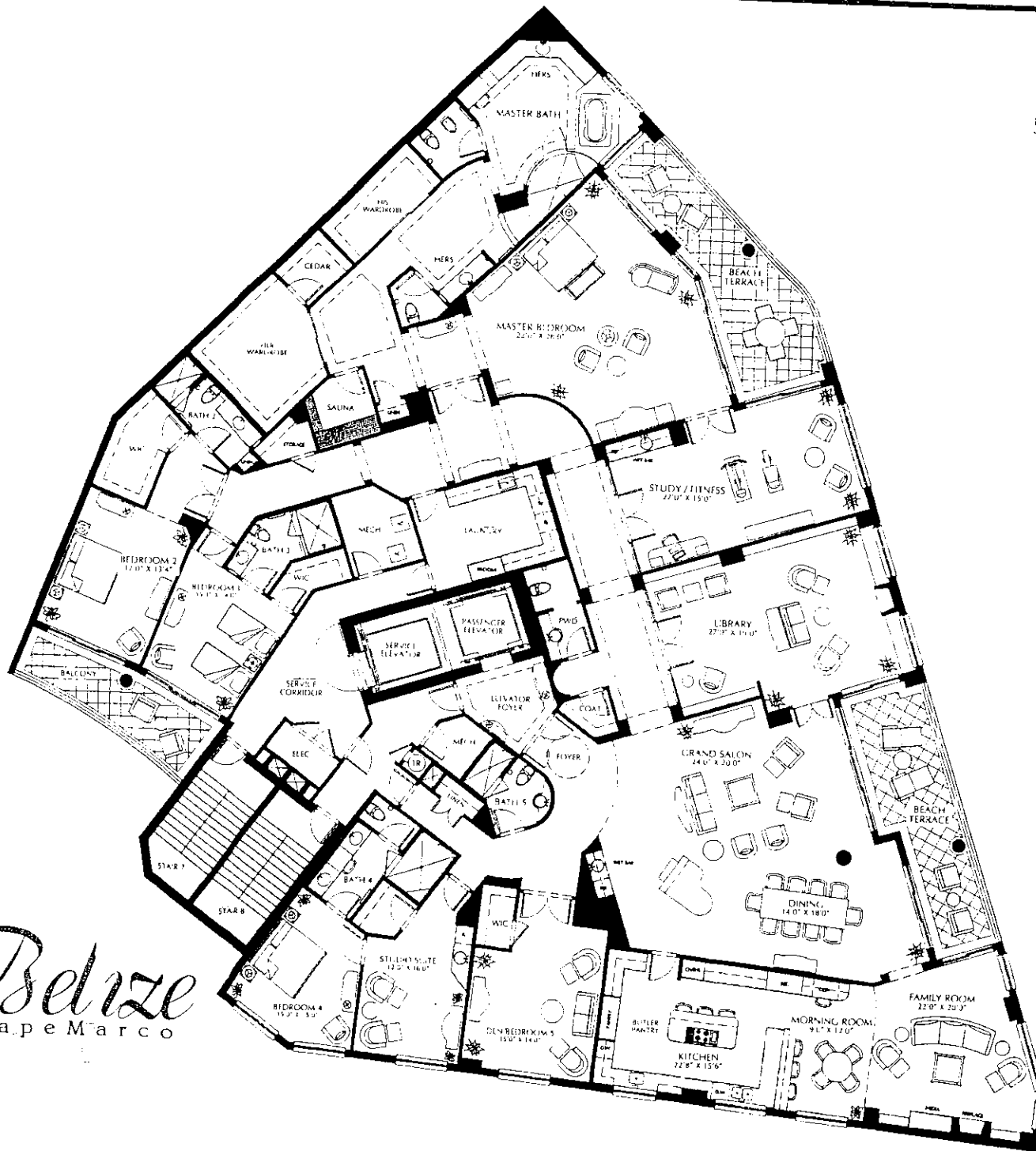
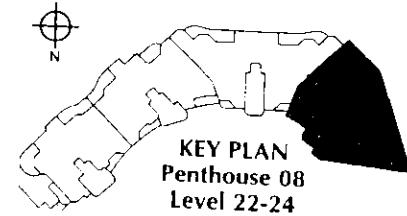
Belize
 Cape Marco

All dimensions are approximate. This floor plan is subject to change without notice. The Seller reserves the absolute right, in its sole judgement and discretion, to substitute appliances, materials, fixtures and equipment of equal or greater quality or value for those specified. The living area square footage stated includes the private elevator vestibule area which is a limited common element. (L.C.E.)

Oral representations cannot be relied upon as correctly stating the representations of the developer. For correct representations, make reference upon this brochure and to the documents required by section 718.503 Florida Statutes, to be furnished by the developer to a buyer.

BELIZE

Penthouse 08
5 Bedroom, 5 1/2 Bath, Study, Library
Enclosed Area 7,905 Sq.Ft.
Total Residence 8,702 Sq.Ft.



Belize
Cape Marco

All dimensions are approximate. This floor plan is subject to change without notice. The Seller reserves the absolute right, in its sole judgement and discretion, to substitute appliances, materials, fixtures and equipment of equal or greater quality or value for those specified. The living area square footage stated includes the private elevator vestibule area which is a limited common element. (L.C.E.)

Oral representations cannot be relied upon as correctly stating the representations of the developer. For correct representations, make reference upon this brochure and to the documents required by section 718.503 Florida Statutes, to be furnished by the developer to a buyer.