

JAHITA CONDOMINIUM
 HURON COURT

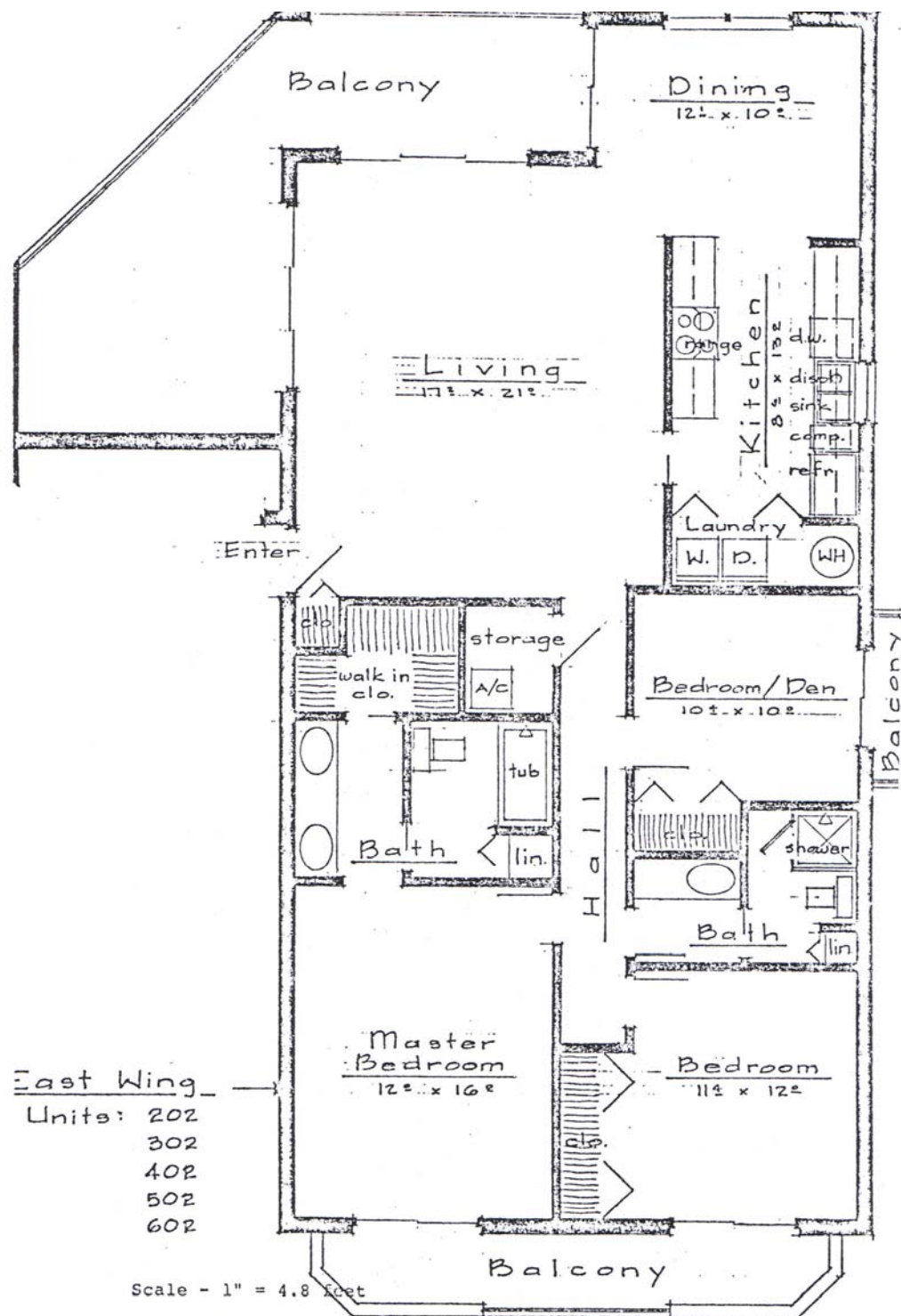
September 29, 1979
 John Hobart, Architect

All buildings on this plan are proposed condominium living units. There are no existing structures. There will be one building, five stories in height, with an East and a West Wing. There shall be ten units.

Five parking spaces shall be common elements. Ten parking spaces shall be common areas. Ten parking spaces shall be common areas. Ten parking spaces shall be common areas.

SCALE: 1 inch = 20 feet
 SITE PLAN and GROUND FLOOR PLAN

100
 101
 102
 103
 104
 105
 106
 107
 108
 109
 110
 111
 112
 113
 114
 115
 116
 117
 118
 119
 120
 121
 122
 123
 124
 125
 126
 127
 128
 129
 130
 131
 132
 133
 134
 135
 136
 137
 138
 139
 140
 141
 142
 143
 144
 145
 146
 147
 148
 149
 150
 151
 152
 153
 154
 155
 156
 157
 158
 159
 160
 161
 162
 163
 164
 165
 166
 167
 168
 169
 170
 171
 172
 173
 174
 175
 176
 177
 178
 179
 180
 181
 182
 183
 184
 185
 186
 187
 188
 189
 190
 191
 192
 193
 194
 195
 196
 197
 198
 199
 200



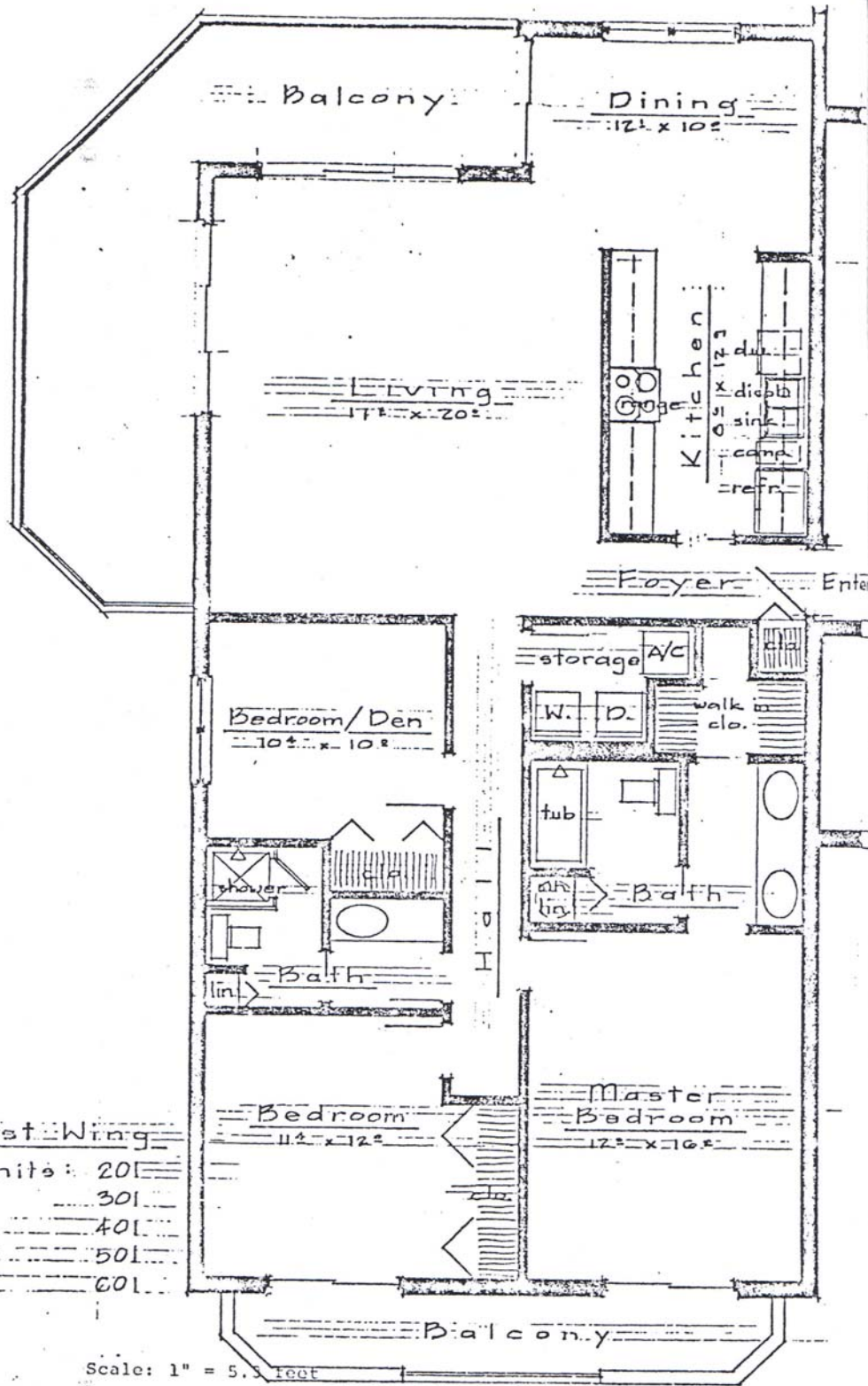
East Wing
 Units: 202
 302
 402
 502
 602

Scale - 1" = 4.8 feet

Air-conditioned area: 1552 gr. sq. ft.
 Balcony area: 388 gr. sq. ft.
 Total area: 1920 gr. sq. ft.

John Hobart, Architect
 Naples, Florida

ANAHITA CONDOMINIUM
 891 Huron Court
 Marco Island, Florida



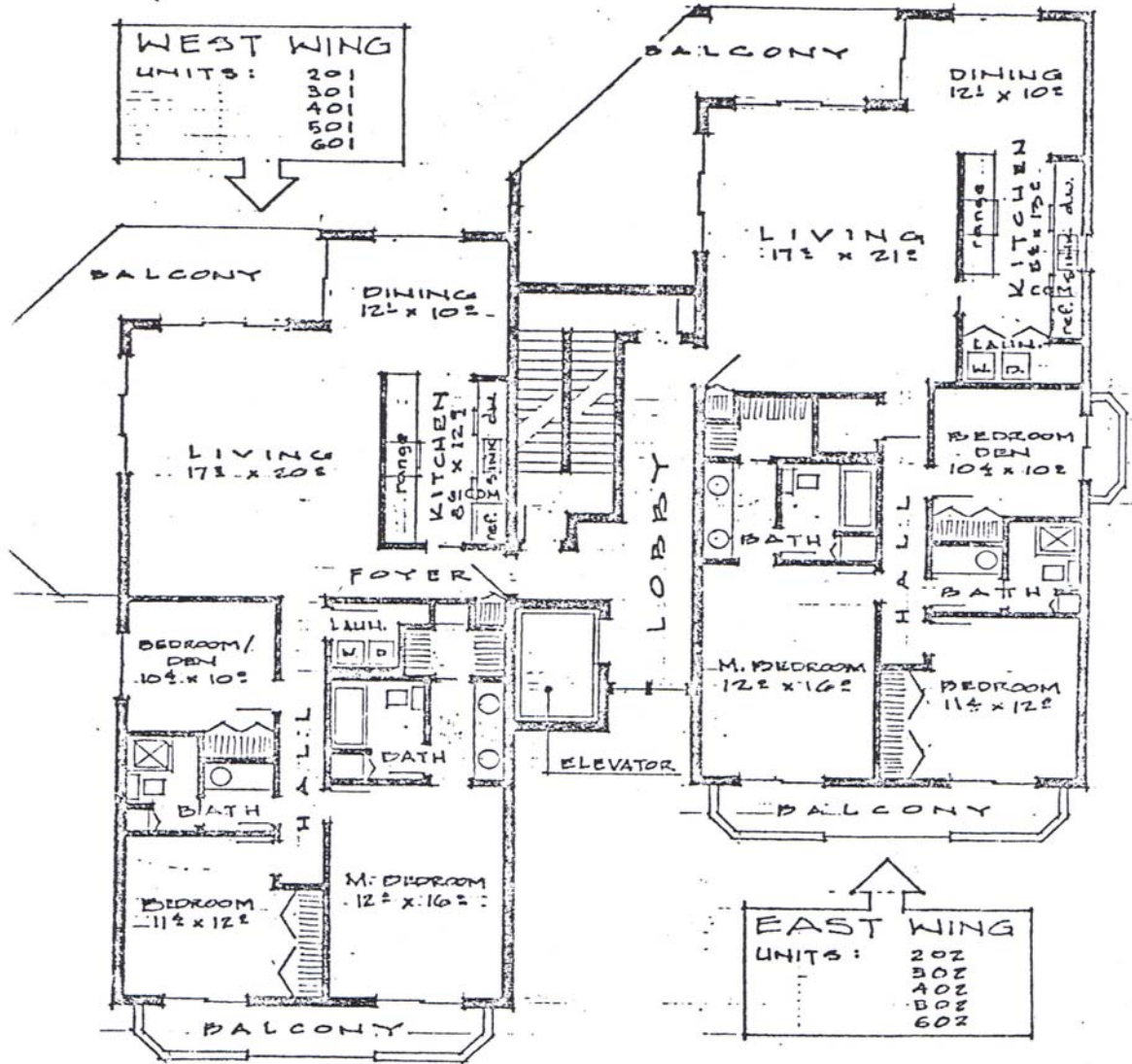
Left Wing
 Units: 201
 301
 401
 501
 601

Scale: 1" = 5.5 feet

Air conditioned area: 1532 gr. sq. ft.
 Balcony area: 392 gr. sq. ft.
 Total area: 1924 gr. sq. ft.

John Hobart, Architect ANAHITA CONDOMINIUM
 Naples, Florida

UNIT AREA : 1532 GR. SQ. FT.
 BALCONY AREA : 392 GR. SQ. FT.



Scale: 1" = 10 feet

TYPICAL FLOOR PLAN
 (3RD FLOOR LEVEL)

ANAHITA CONDOMINIUM

John Hobart, Architect
 Naples, Florida 33940